

Yakima County Economy – 2015 in Review

For: Greater Yakima Chamber of Commerce

Donald W. Meseck
Regional Labor Economist

February 8, 2016



**Employment
Security
Department**
WASHINGTON STATE

Today's presentation

Quarterly Census of Employment and Wage (QCEW) summaries for Yakima County in 2014

- Slides 3-7

Unemployment rates and labor force trends in Yakima County through 2015

- Slides 8-11

Nonfarm employment trends through 2015

- Slides 12-18

Employment projections for Yakima County

- Slides 19-20

Summary and Questions

- Slides 21-22

Analyzed county-level QCEW data for 22 industries/sectors

19 private-industry sectors

NAICS 11 (Agriculture, forestry and fishing)

NAICS 21 (Mining)

NAICS 22 (Utilities)

NAICS 23 (Construction)

NAICS 31-33 (Manufacturing)

NAICS 42 (Wholesale trade)

NAICS 44-45 (Retail trade)

NAICS 48-49 (Transportation and warehousing)

NAICS 51 (Information)

NAICS 52 (Finance and insurance)

NAICS 53 (Real estate and rentals)

NAICS 54 (Professional and business services)

NAICS 55 (Management of companies)

NAICS 56 (Administrative and waste services)

NAICS 61 (Private education services)

NAICS 62 (Health services)

NAICS 71 (Arts, entertainment and recreation)

NAICS 72 (Accommodation and food services)

NAICS 81 (Other services)

Three government sectors

Federal government

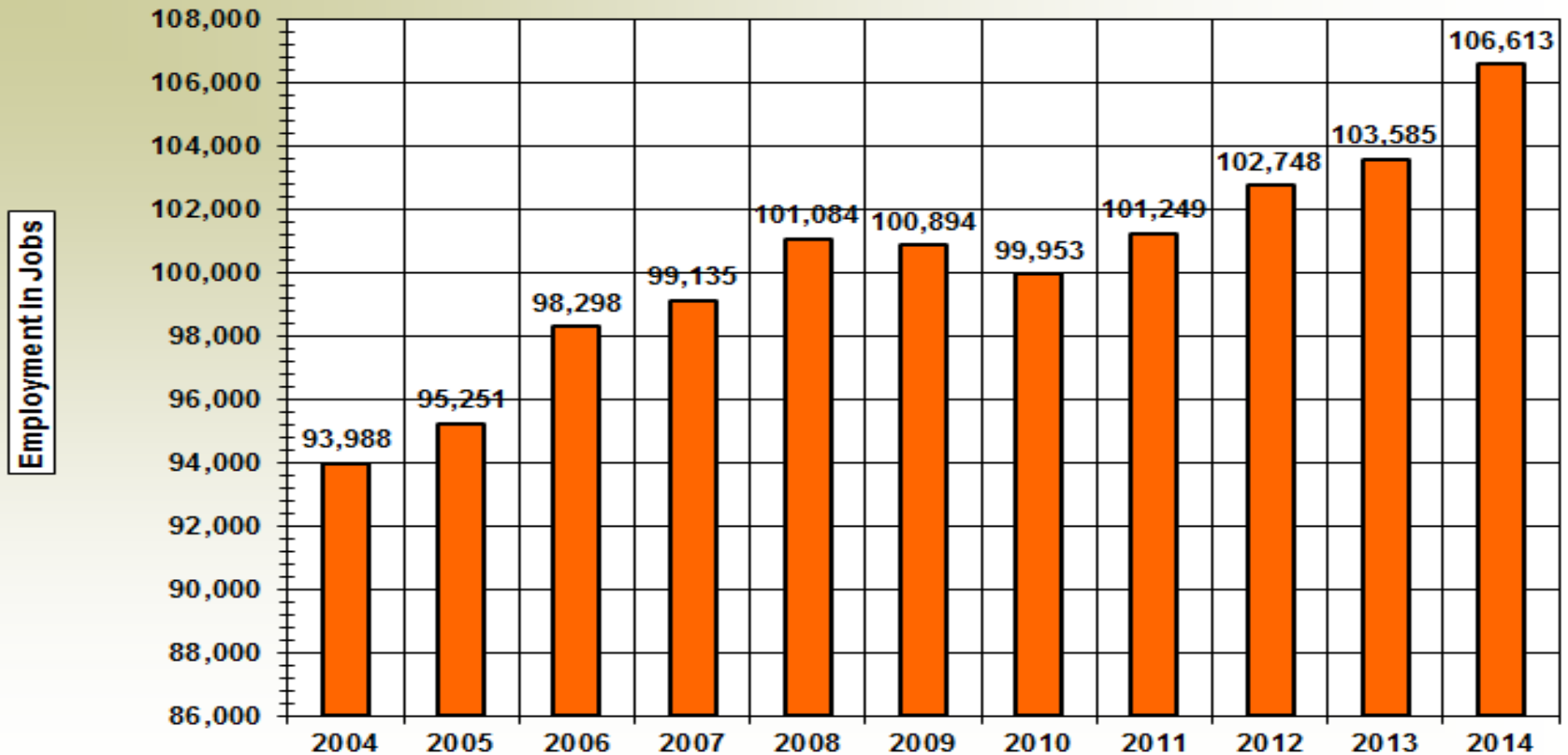
State government

Local government

* North American Industry Classification System (NAICS)

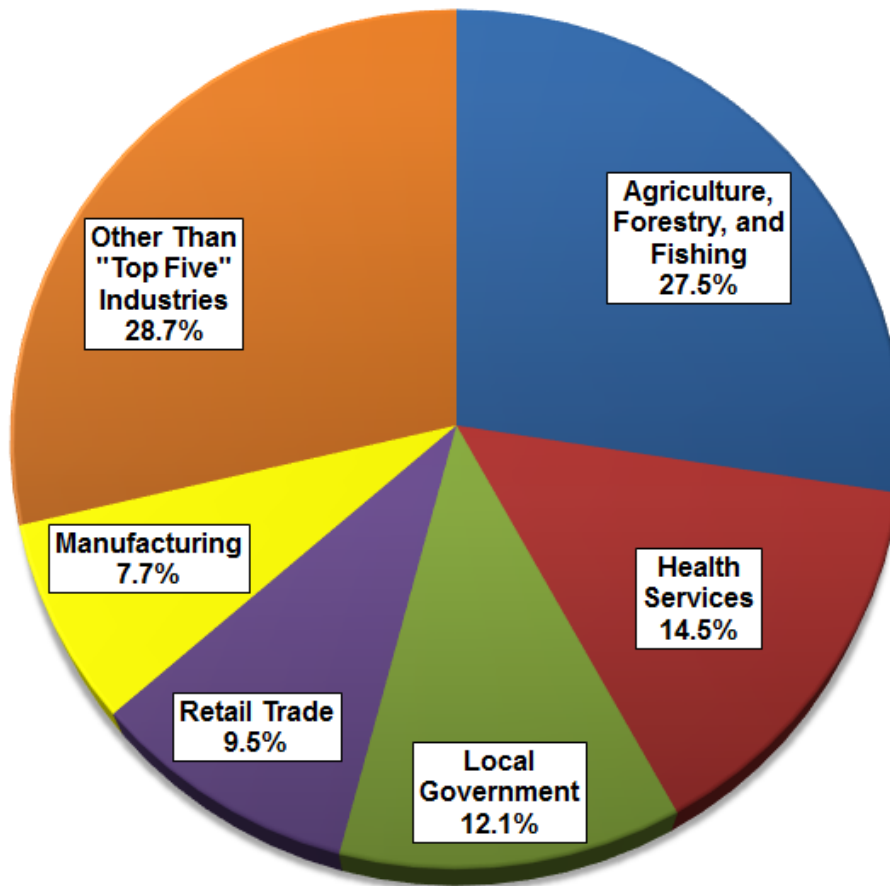
QCEW is the Quarterly Census of Employment and Wages, a U.S. Bureau of Labor Statistics data set.

Yakima County: Total covered employment from 2004-2014



Source: QCEW Data

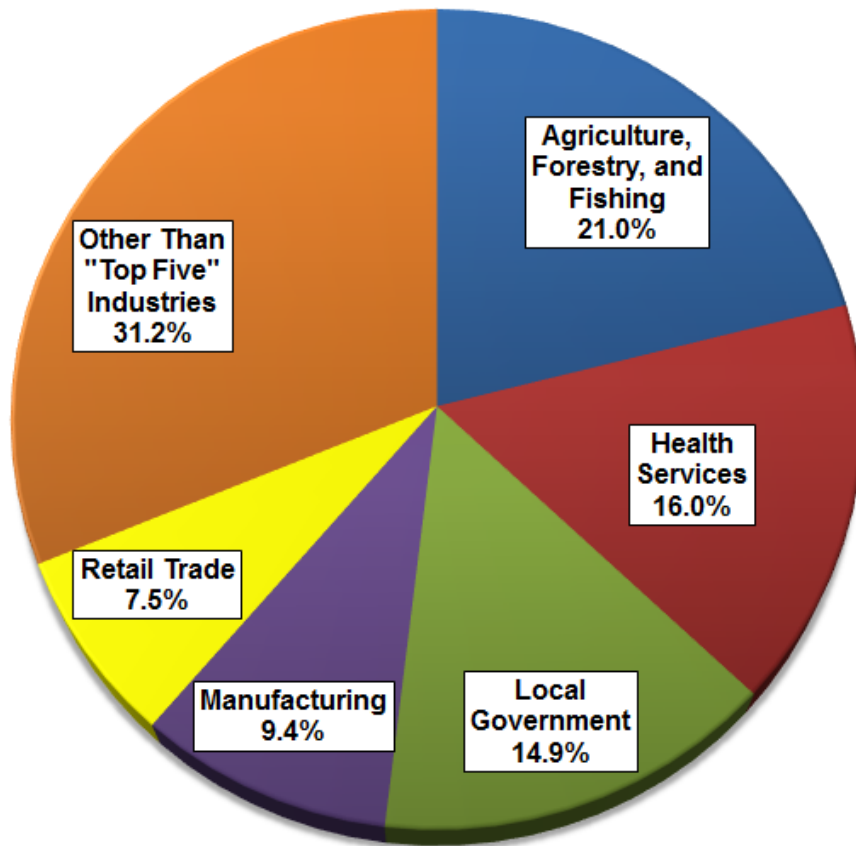
Yakima County: Top 5 industries by employment in 2014



Industry	Number of Jobs
Agriculture, Forestry, and Fishing	29,331
Health Services	15,456
Local Government	12,896
Retail Trade	10,103
Manufacturing	8,216
Other Than "Top Five" Industries	30,611
Total Covered Employment	106,613

Source: QCEW Data

Yakima County: Top 5 industries by wages in 2014



Industry	Number of Jobs
Agriculture, Forestry, and Fishing)	\$775,183,033
Health Services	\$592,111,640
Local Government	\$548,775,275
Manufacturing	\$347,502,709
Retail Trade	\$276,141,632
Other Than "Top Five" Industries	\$1,152,116,174
Total Covered Wages	\$3,691,830,463

Source: QCEW Data

Yakima County in 2014: Summary of “Top 5” industries

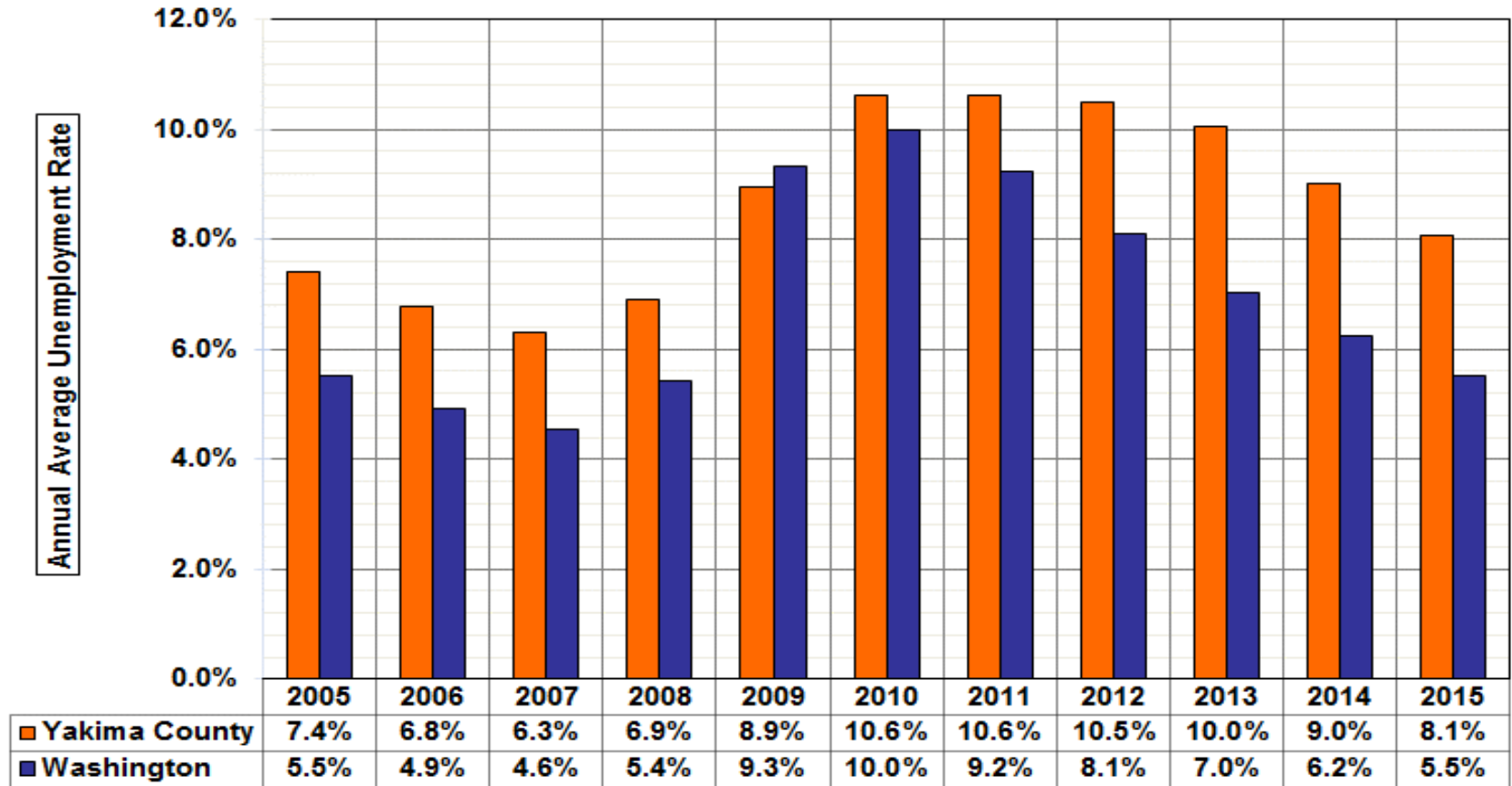
Total covered wages = \$3.69 billion

Average annual employment = 106,613

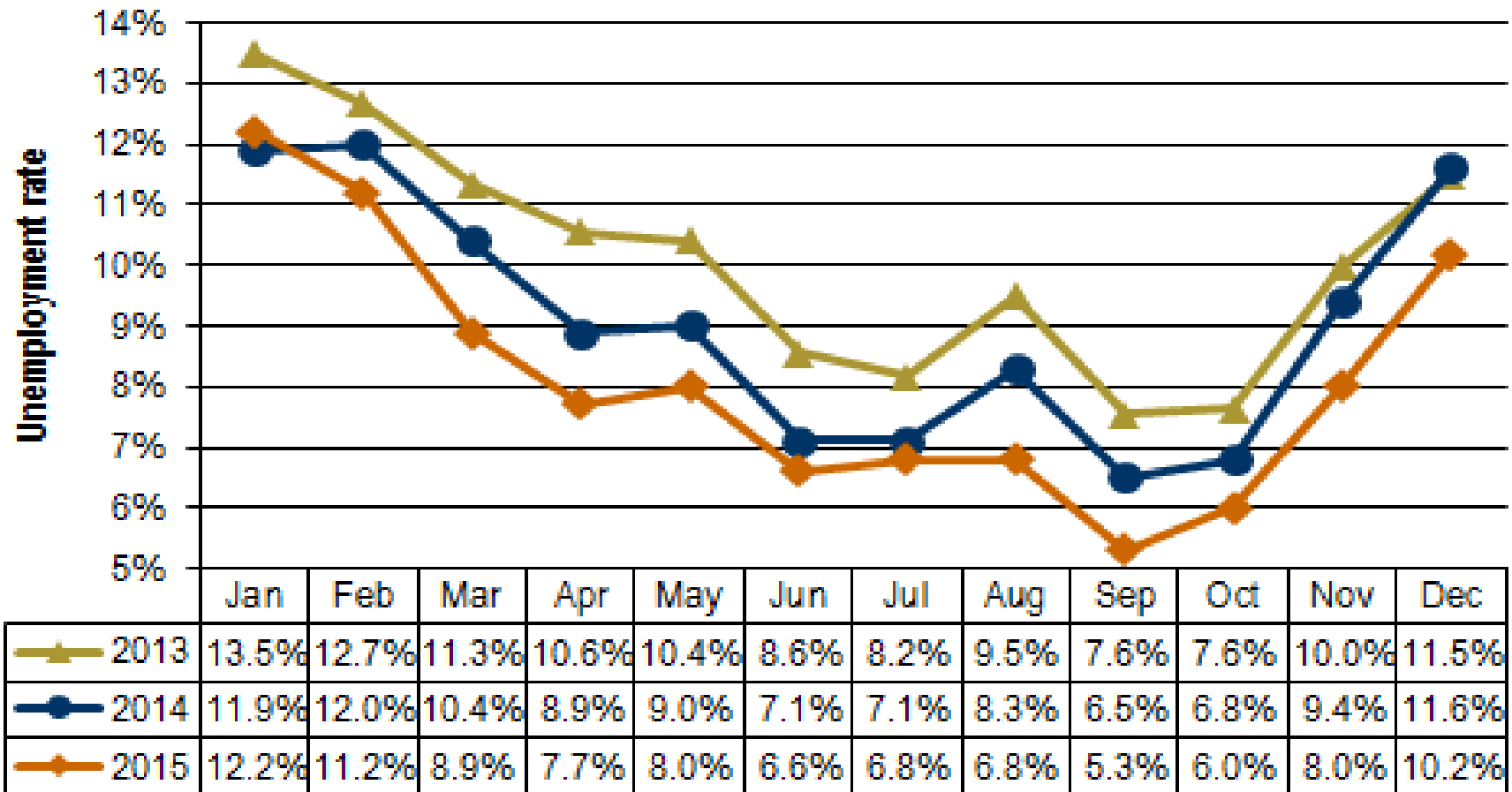
Average annual wage = \$34,628 (WA = \$55,003)

Industry	Percent of jobs (in Yakima County)	Percent of wages (in Yakima County)
Agriculture	27.5	21.0
Health services	14.5	16.0
Local government	12.1	14.9
Retail trade	9.5	7.5
Manufacturing	7.7	9.4

Annual Average Unemployment Rates in Yakima County and in Washington from 2005-2015



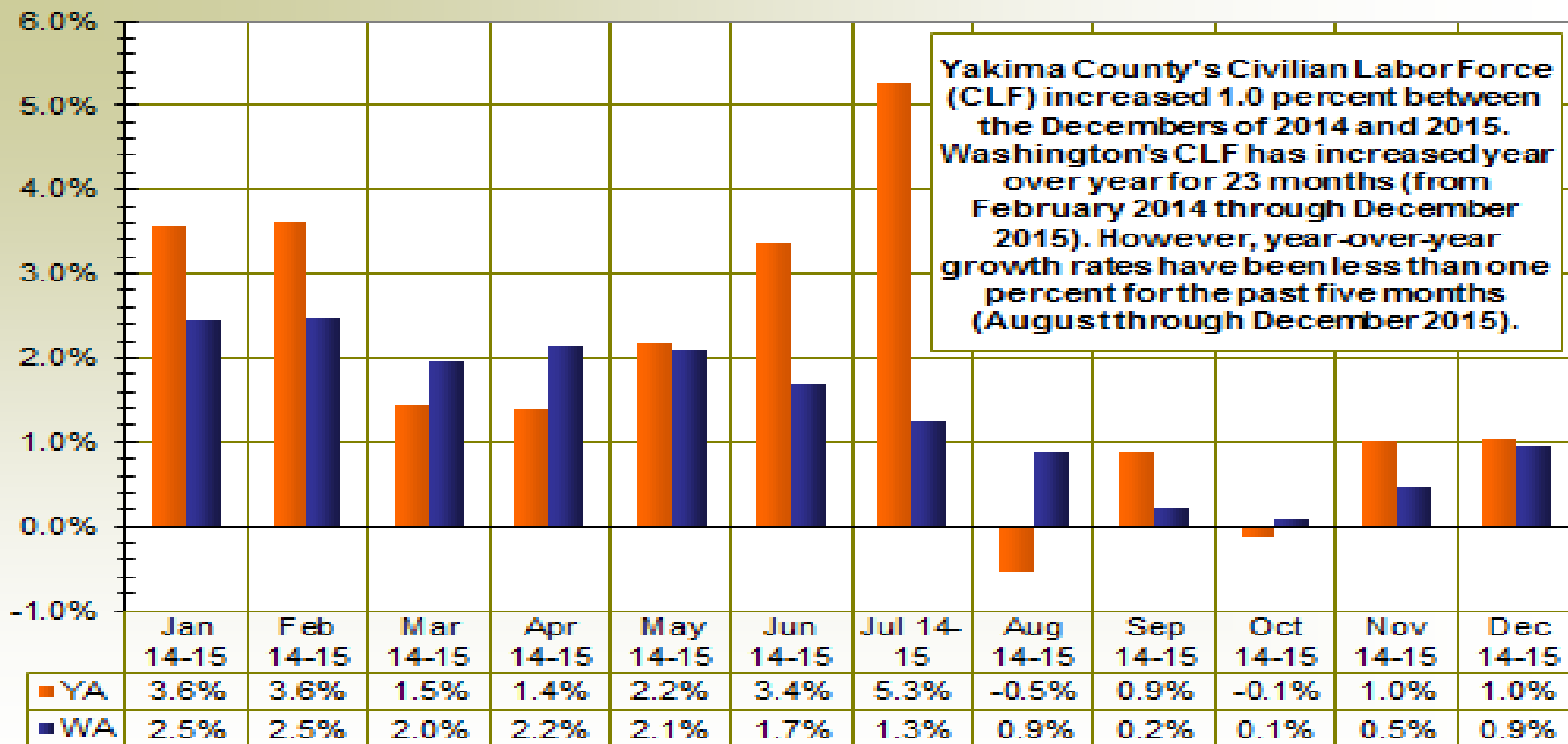
Unemployment Rates in Yakima County: From January 2013-December 2015



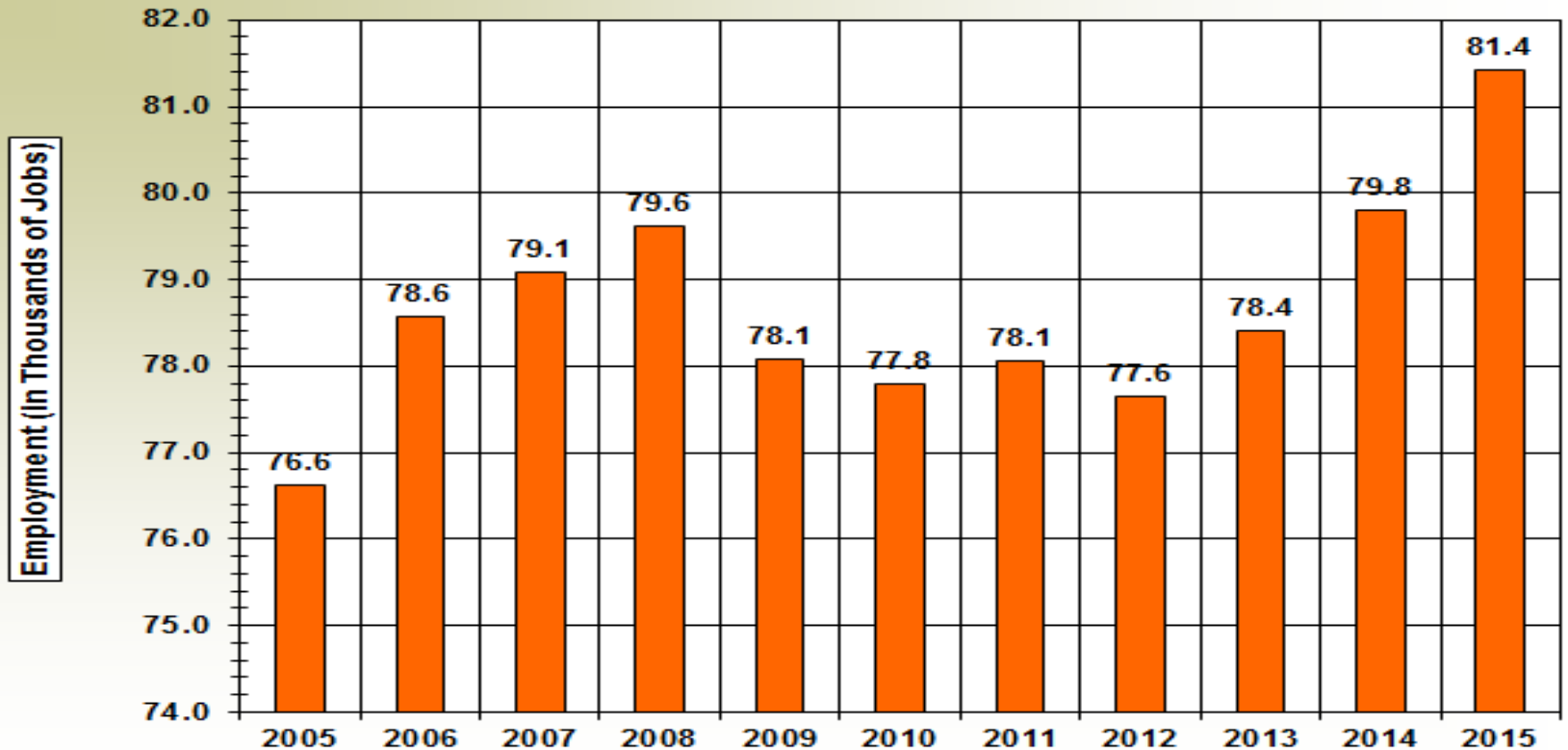
Yakima County's Civilian Labor Force: From December 2014-December 2015

			Change	
			Dec-14	Dec-14
Yakima County	Preliminary Dec-15	Revised Dec-14	Dec-15	Dec-15 %
Labor force and unemployment				
Civilian labor force	117,177	115,969	1,208	1.0%
Resident employment	105,180	102,511	2,669	2.6%
Unemployment	11,997	13,458	-1,461	-10.9%
Unemployment rate	10.2	11.6	-1.4	

Labor Force Changes in Yakima County and Washington in the last twelve months

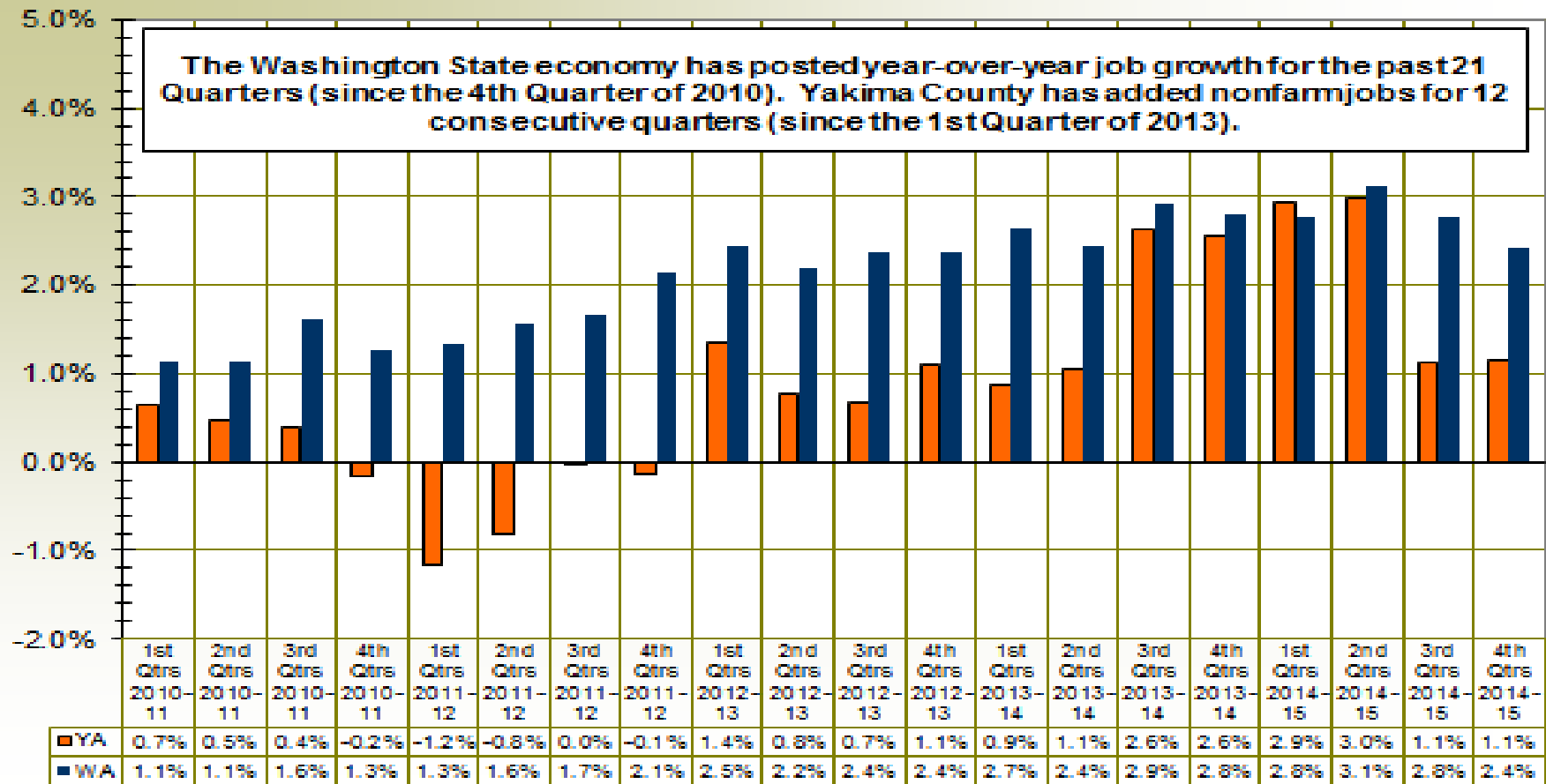


Yakima County: Total nonfarm employment from 2005-2015

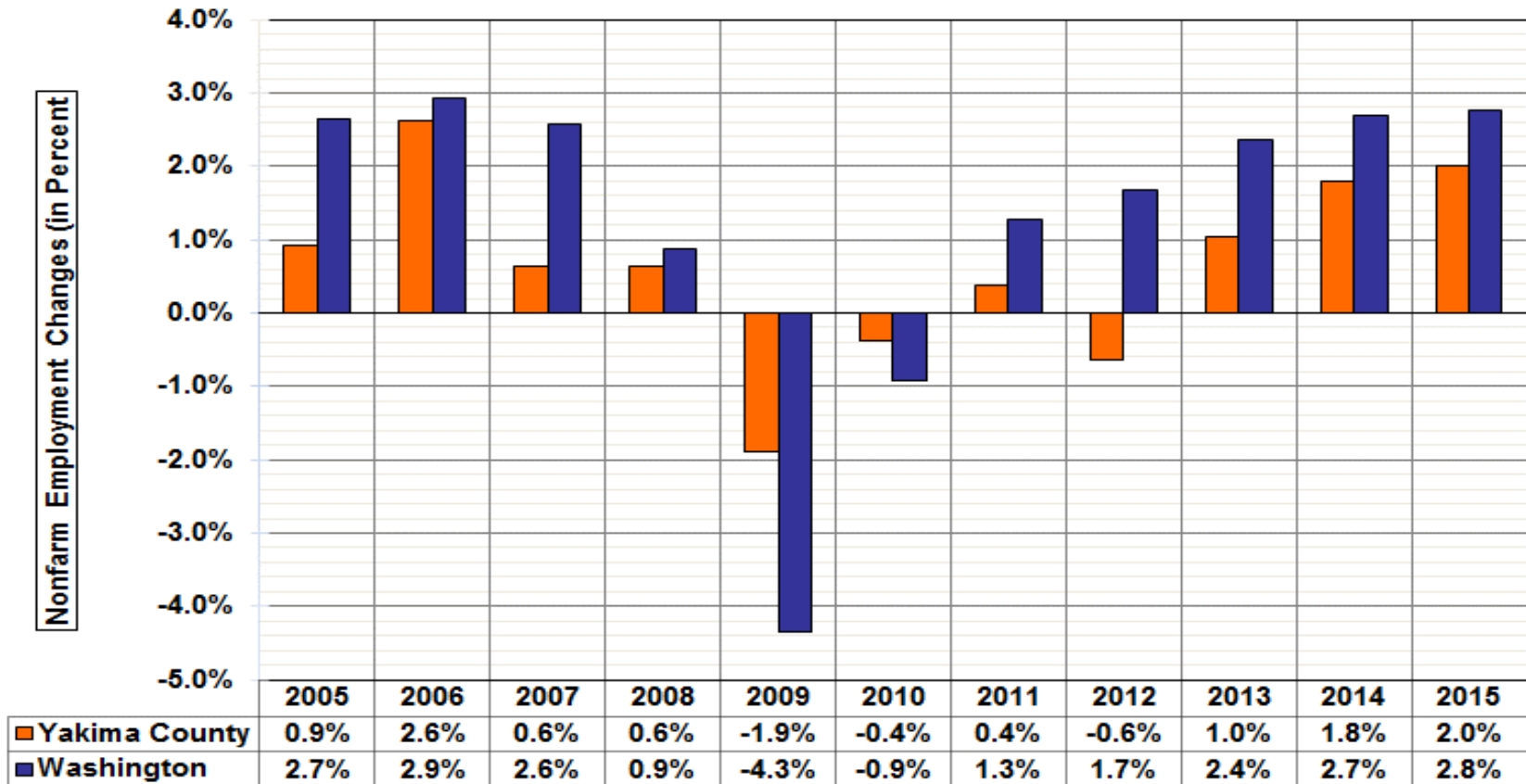


Source: CES Data, LMPA, ESD

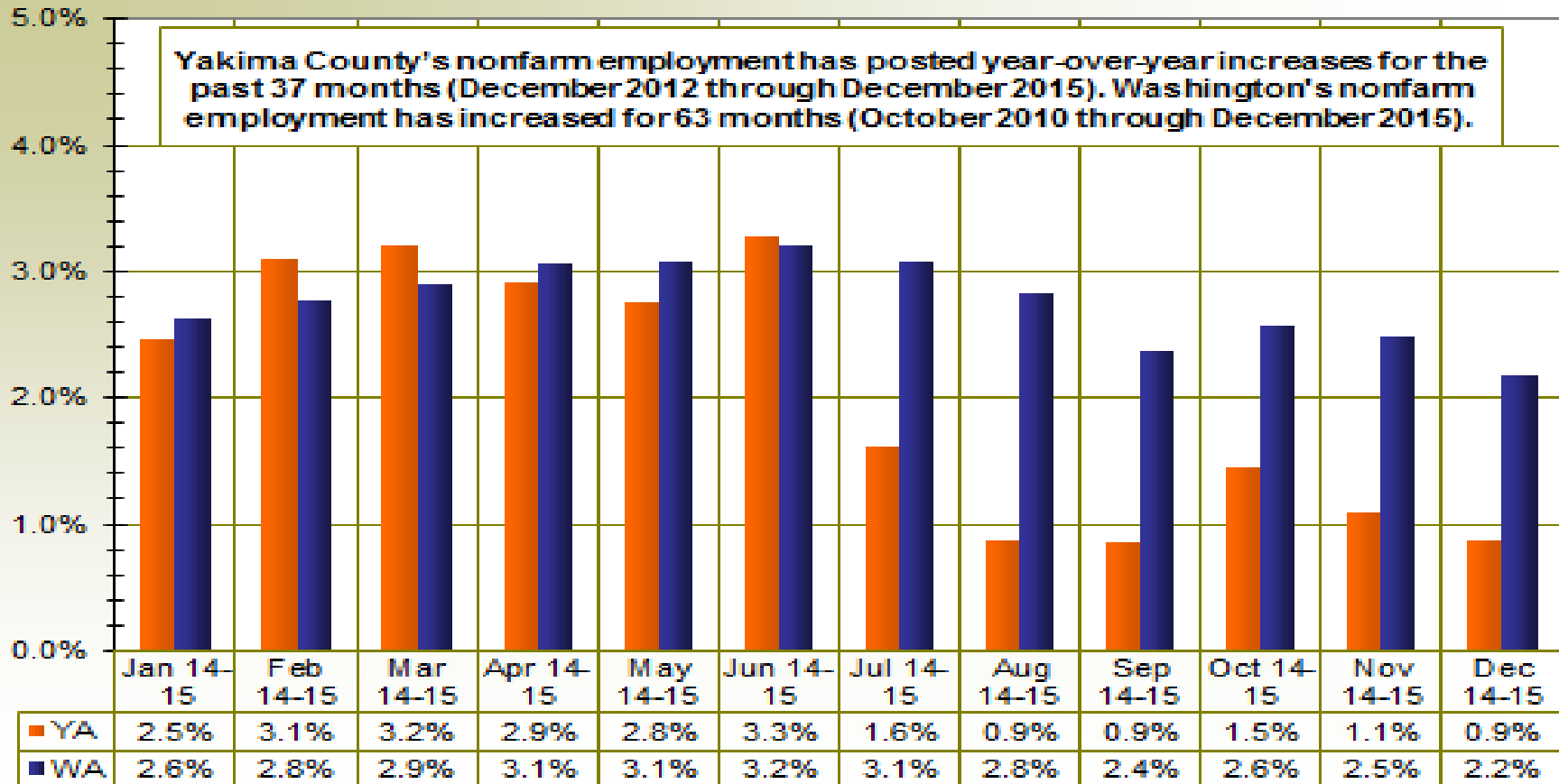
Yakima County and Washington: Nonfarm employment changes during the past 20 quarters (i.e., 2011-2015)



Yakima County and Washington: Nonfarm employment changes during the last 11 years (2005-2015)



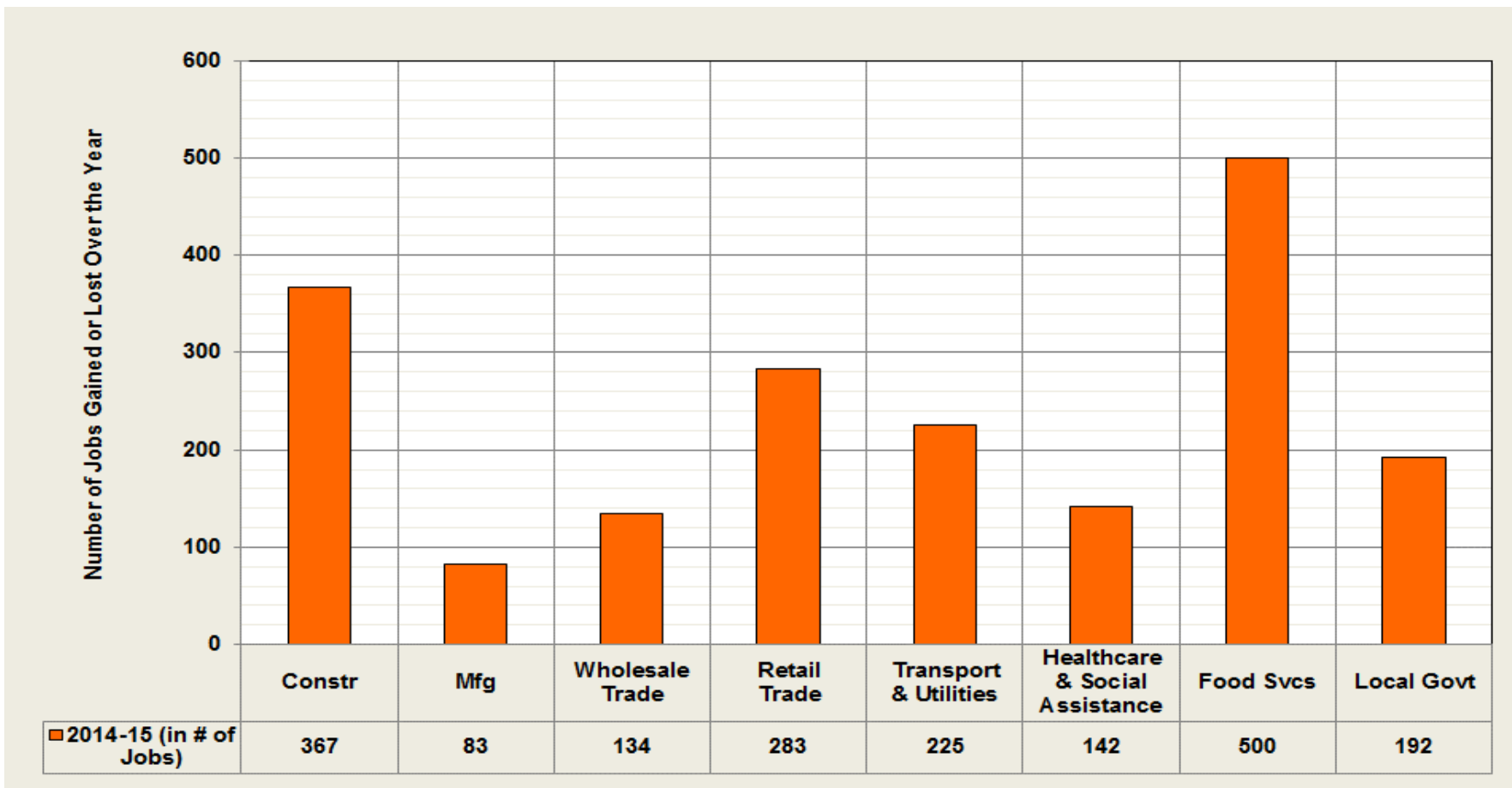
Nonfarm employment changes in Yakima County and Washington in the last twelve months



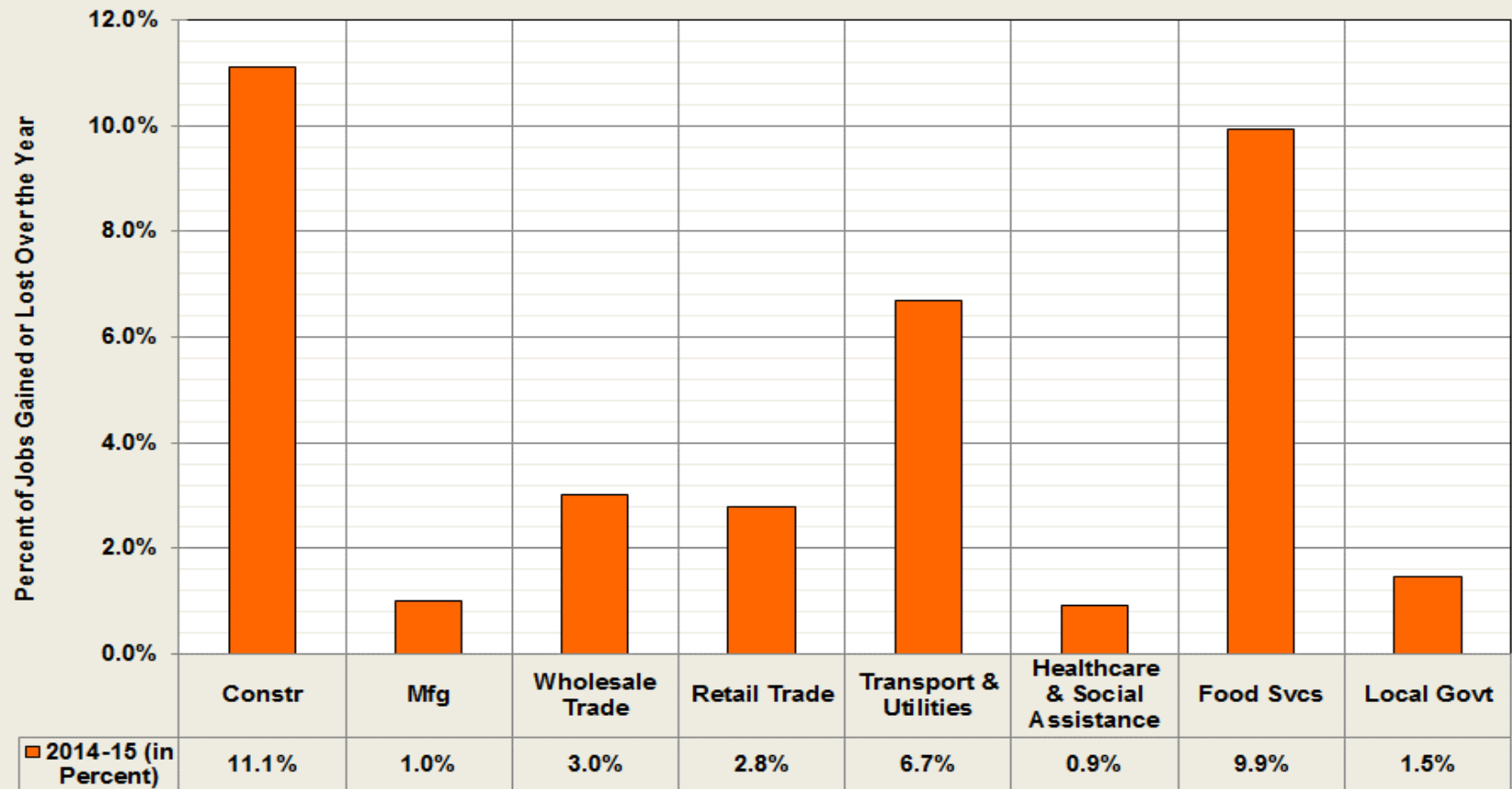
Yakima County - Nonfarm job growth in major industries from 2014 to 2015

Industry	Ann. Avg. Employment in 2014	Ann. Avg. Employment in 2015	Job Change	Percent Change
Total Nonfarm	79.8	81.4	1.6	2.0%
Total Private	62.9	64.2	1.4	2.2%
Goods Producing	11.6	12.0	0.4	3.9%
Mining, Logging, and Construction	3.3	3.7	0.4	11.1%
Manufacturing	8.3	8.3	0.1	1.0%
Nondurable Goods	5.4	5.4	0.0	0.8%
Service Providing	68.3	69.4	1.2	1.7%
Private Service Providing	51.3	52.2	0.9	1.8%
Trade, Transportation, and Utilities	18.0	18.6	0.6	3.6%
Wholesale Trade	4.4	4.6	0.1	3.0%
Retail Trade	10.2	10.5	0.3	2.8%
Transportation and Utilities	3.4	3.6	0.2	6.7%
Professional and Business Services	3.7	3.7	(0.0)	-0.7%
Education and Health Services	16.7	16.8	0.1	0.5%
Health Care and Social Assistance	15.5	15.7	0.1	0.9%
Leisure and Hospitality	6.8	7.3	0.4	6.5%
Food Services	5.0	5.5	0.5	9.9%
Government	16.9	17.2	0.2	1.4%
Federal Government	1.2	1.2	0.0	0.0%
State Government	2.7	2.7	0.0	1.6%
Local Government	13.1	13.3	0.2	1.5%

Summary of job gains/losses (in #) in Yakima County nonfarm industries from 2014 to 2015



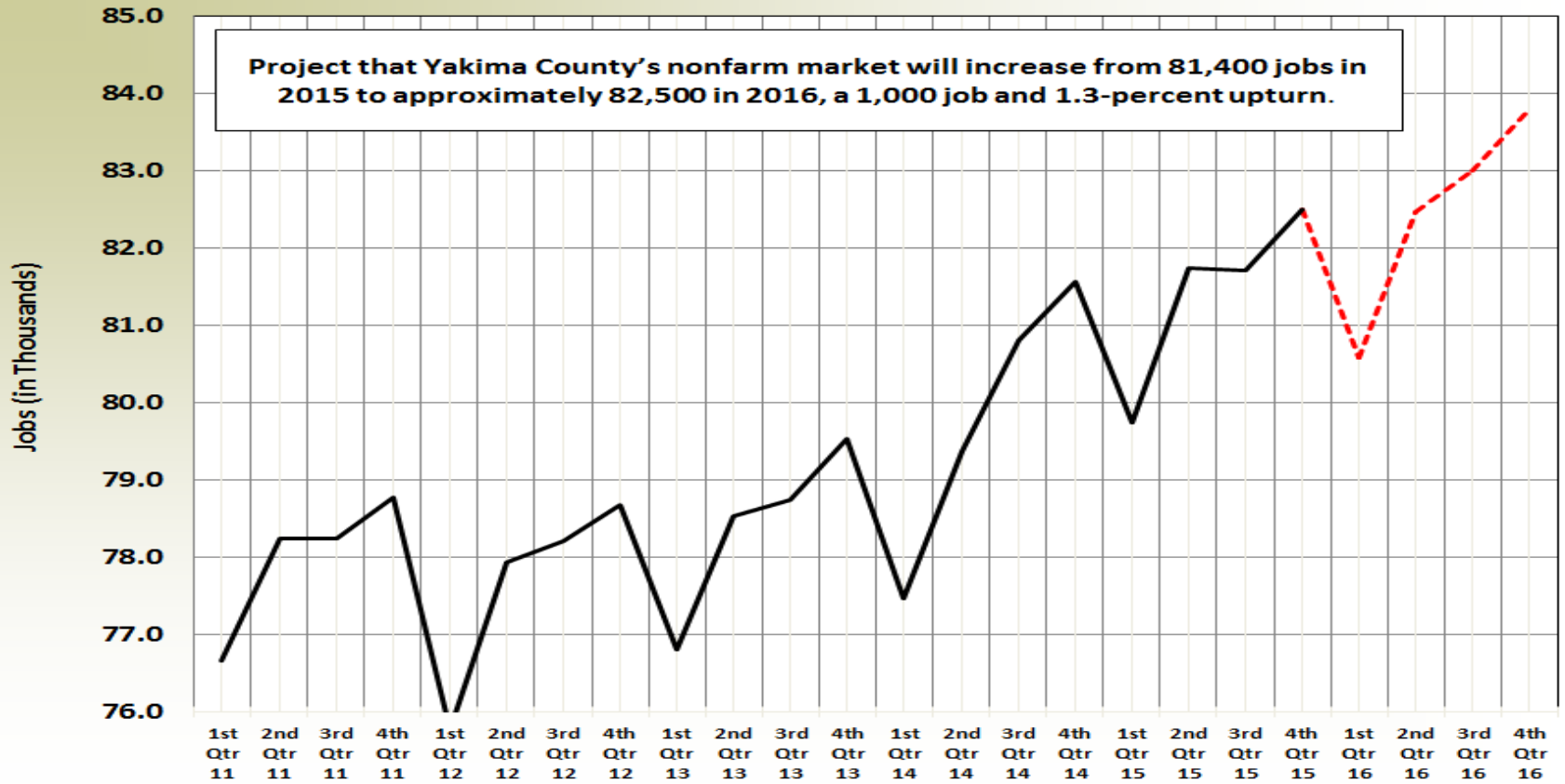
Summary of job gains/losses (in %) in Yakima County nonfarm industries from 2014 to 2015



Yakima County: Comparison of 2015 Employment Projections (on 9 Feb 15) with Actual Data (on 8 Feb 16)

On 9 February 2015:					
	1st Qtr	2nd Qtr	3rd Qtr	4th Qtr	An Avg
2015 (Projected)	80.5	82.5	82.7	83.7	82.3
2014	78.8	81.0	81.1	82.4	80.8
2014-2015 (in #)	1.6	1.5	1.5	1.3	1.5
2014-2015 (in %)	2.1%	1.9%	1.9%	1.6%	1.9%
On 8 February 2016:					
	1st Qtr	2nd Qtr	3rd Qtr	4th Qtr	An Avg
2015 (Actual)	79.7	81.7	81.7	82.5	81.4
2014	77.5	79.4	80.8	81.6	79.8
2014-2015 (in #)	2.3	2.4	0.9	0.9	1.6
2014-2015 (in %)	2.9%	3.0%	1.1%	1.1%	2.0%

Projected nonfarm job growth in Yakima County for 1st-4th Quarters 2016



Nonfarm job growth in 2015 was robust in the first two quarters but sluggish in the last two

- The not seasonally adjusted unemployment rate declined from 9.0 in 2014 to 8.1 percent in 2015.
- Yakima County's labor force increased from 119,411 residents in 2014 to 121,689 in 2015 (up 1.9 percent). However, growth rates were slow (one percent or less) from August through December 2015.
- Nonfarm employment averaged 81,400 in 2015, adding 1,600 jobs since 2014, a 2.0 percent increase. Construction, retail trade, transportation and utilities, and food services accounted for 87.5 percent of the 1,600 jobs added during 2015.

Yakima County – 2015 in Review

Questions?

Donald W. Meseck

Regional Labor Economist for Adams, Chelan, Douglas, Grant, Kittitas, Okanogan, and Yakima Counties

Labor Market and Performance Analysis (LMPA)

Employment Security Department

Address: 306 Division Street, Yakima, WA 98902

Phone: (509) 573-4564

Email: dmeseck@esd.wa.gov

Website: <https://fortress.wa.gov/esd/employment>