

# Yakima County Economy – 2016 in Review

For: Greater Yakima Chamber of Commerce

By: Donald W. Meseck, Regional Labor Economist, Labor  
Market and Performance Analysis (LMPA), ESD

Date: March 13, 2017



**Employment  
Security  
Department**  
WASHINGTON STATE

# Today's presentation

## Quarterly Census of Employment and Wage (QCEW) summaries for Yakima County in 2015

- Slides 3-7

## Unemployment and labor force trends, 2005-2016

- Slides 8-11

## Nonfarm employment trends, 2005-2016

- Slides 12-18

## Employment projections for Yakima County

- Slides 19-20

## Summary and Questions

- Slides 21-22

# Analyzed county-level QCEW data for 22 industries/sectors

## 19 private-industry sectors

**NAICS 11** (Agriculture, forestry and fishing)

**NAICS 21** (Mining)

**NAICS 22** (Utilities)

**NAICS 23** (Construction)

**NAICS 31-33** (Manufacturing)

**NAICS 42** (Wholesale trade)

**NAICS 44-45** (Retail trade)

**NAICS 48-49** (Transportation and warehousing)

**NAICS 51** (Information)

**NAICS 52** (Finance and insurance)

**NAICS 53** (Real estate and rentals)

**NAICS 54** (Professional and business services)

**NAICS 55** (Management of companies)

**NAICS 56** (Administrative and waste services)

**NAICS 61** (Private education services)

**NAICS 62** (Health services)

**NAICS 71** (Arts, entertainment and recreation)

**NAICS 72** (Accommodation and food services)

**NAICS 81** (Other services)

## Three government sectors

Federal government

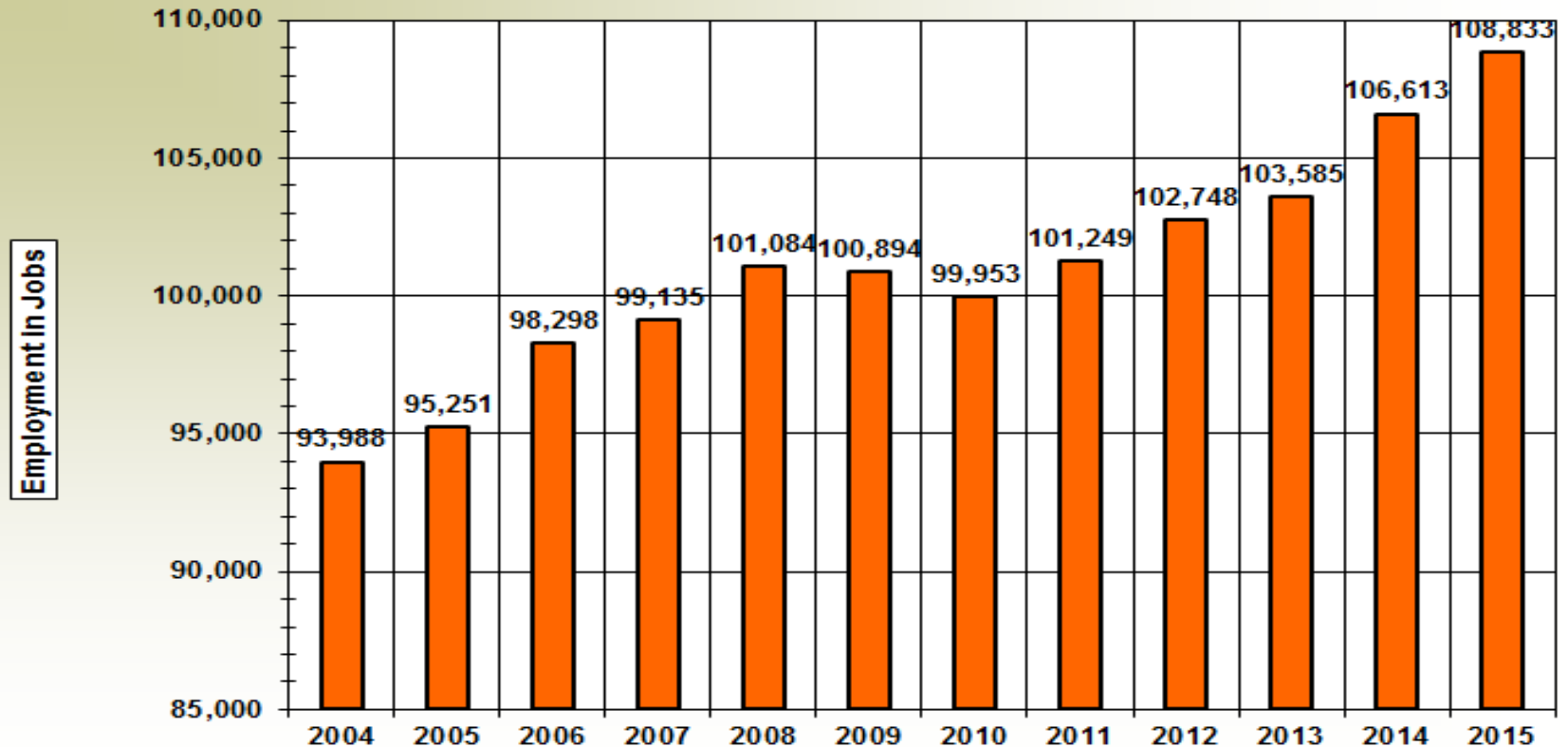
State government

Local government

\* North American Industry Classification System (NAICS)

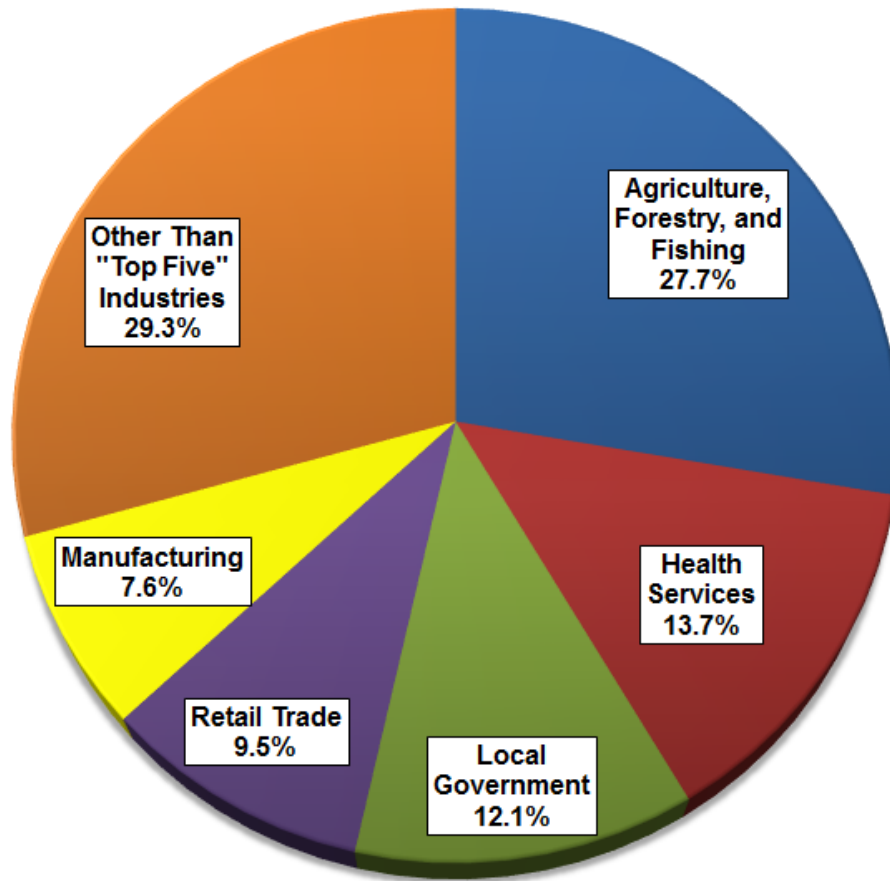
QCEW is the Quarterly Census of Employment and Wages, a  
U.S. Bureau of Labor Statistics data set.

# Yakima County: Total covered employment from 2004-2015



Source: QCEW Data

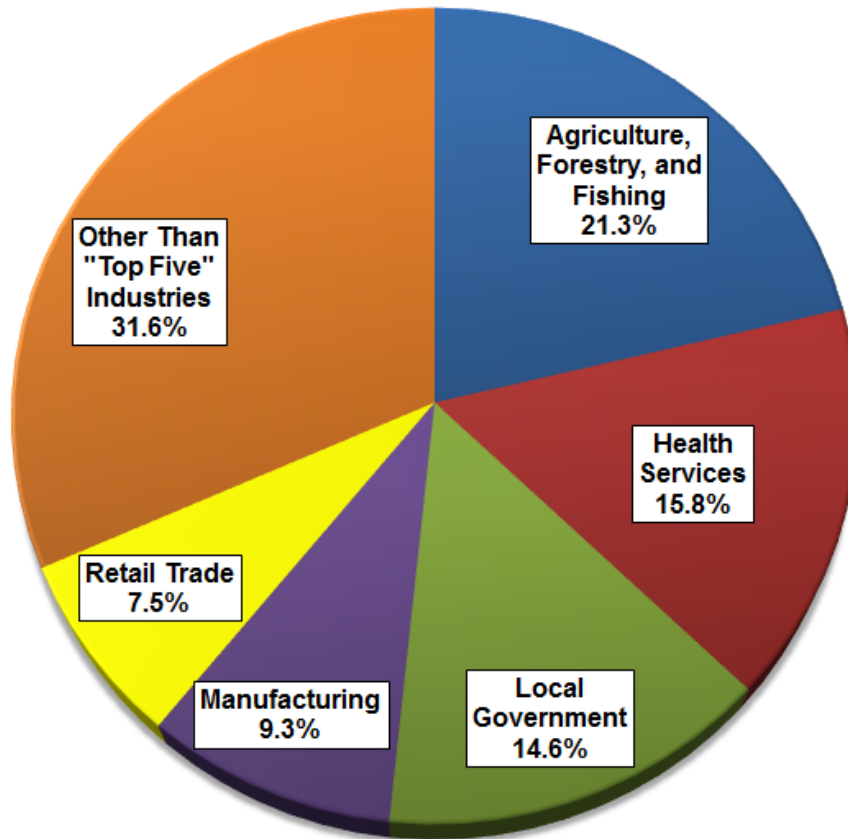
# Yakima County: Top 5 industries by employment in 2015



Industry	Number of Jobs
Agriculture, Forestry, and Fishing	30,191
Health Services	14,930
Local Government	13,147
Retail Trade	10,384
Manufacturing	8,279
Other Than "Top Five" Industries	31,902
<b>Total Covered Employment</b>	<b>108,833</b>

Source: QCEW Data

# Yakima County: Top 5 industries by wages in 2015



Industry	Number of Jobs
Agriculture, Forestry, and Fishing)	\$824,510,422
Health Services	\$611,840,052
Local Government	\$565,210,435
Manufacturing	\$360,934,660
Retail Trade	\$289,565,953
Other Than "Top Five" Industries	\$1,222,438,018
<b>Total Covered Wages</b>	<b>\$3,874,499,540</b>

Source: QCEW Data

# Yakima County in 2015: Summary of “Top 5” industries (ranked by # of jobs)

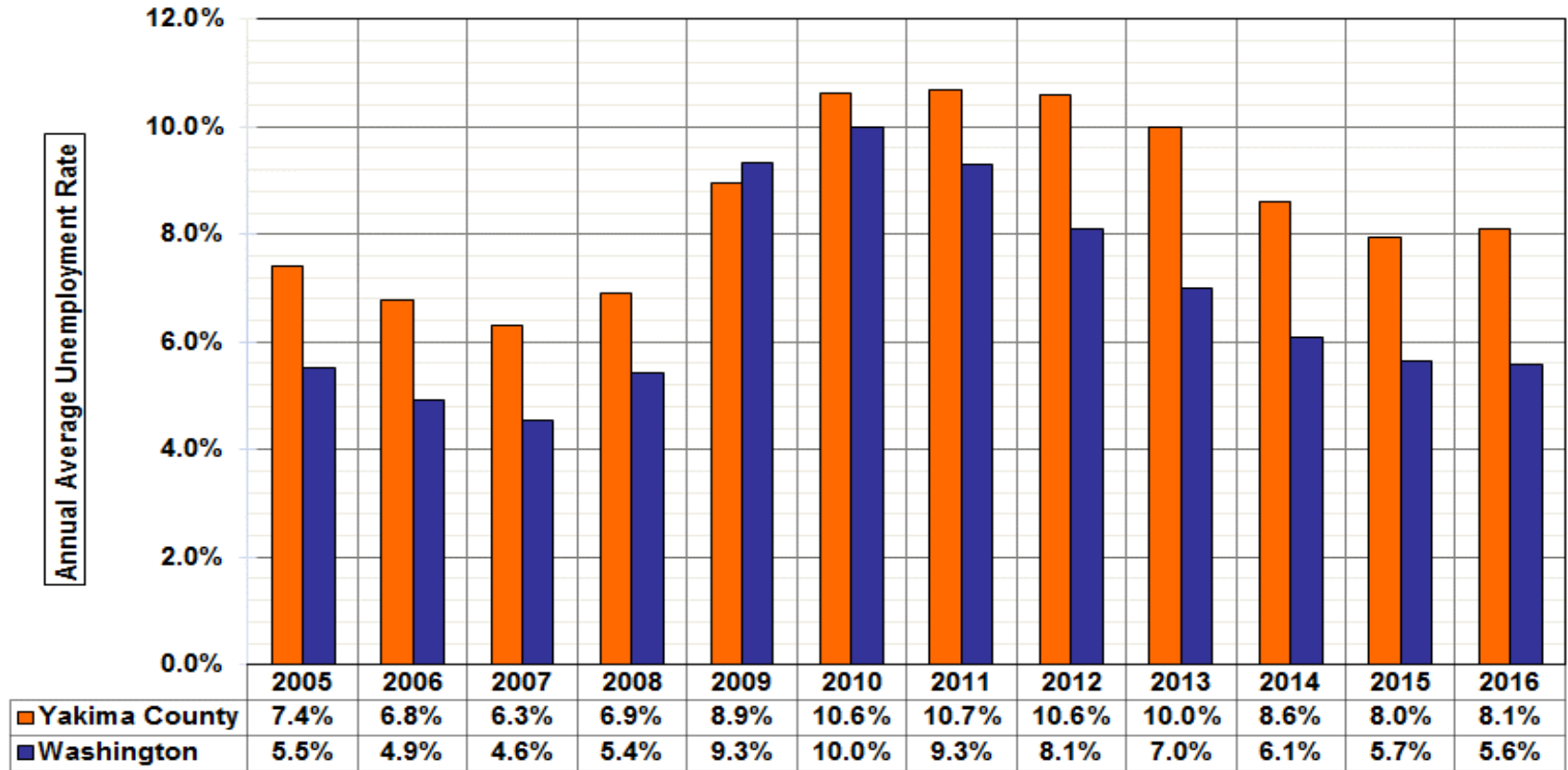
**Total covered wages = \$3.87 billion**

**Average annual employment = 108,833**

**Average annual wage = \$35,600 (62.9 percent of Washington State’s average annual wage of \$56,642)**

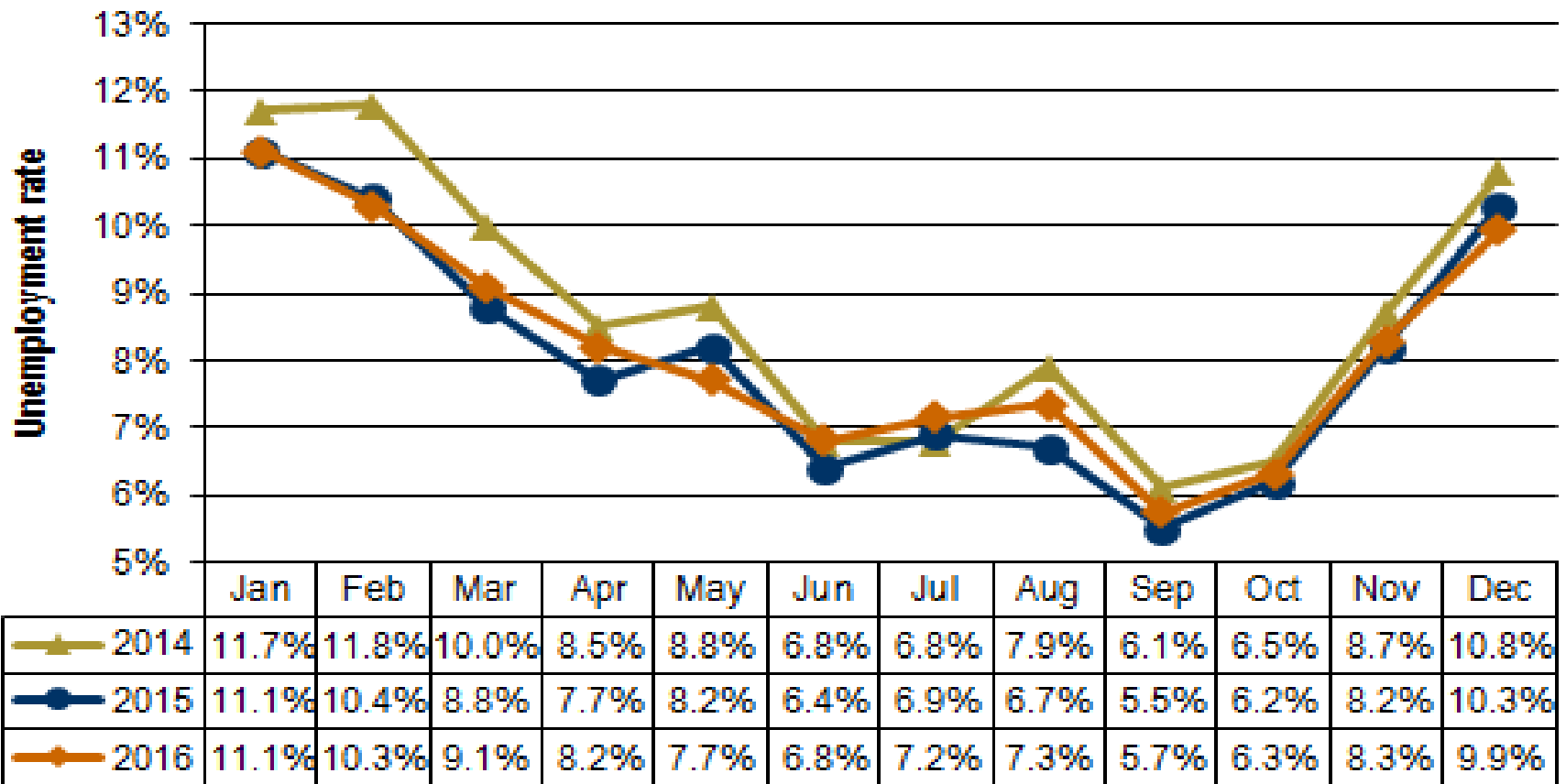
<b>Industry</b>	<b>Percent of jobs (in Yakima County)</b>	<b>Percent of wages (in Yakima County)</b>
Agriculture	27.7	21.3
Health services	13.7	15.8
Local government	12.1	14.6
Retail trade	9.5	7.5
Manufacturing	7.6	9.3

# Annual Average Unemployment Rates in Yakima County and in Washington from 2005-2016





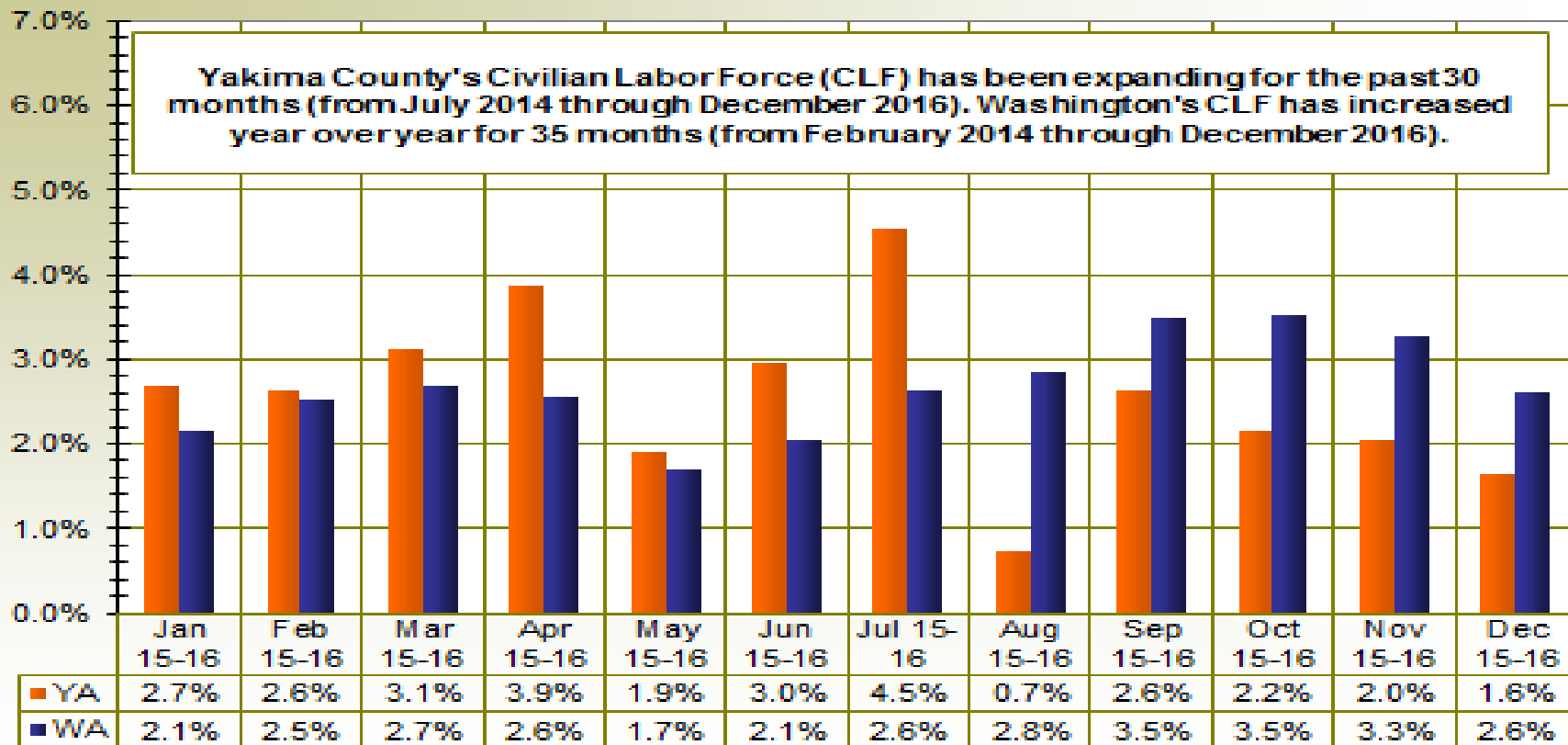
# Unemployment Rates in Yakima County: From January 2014-December 2016



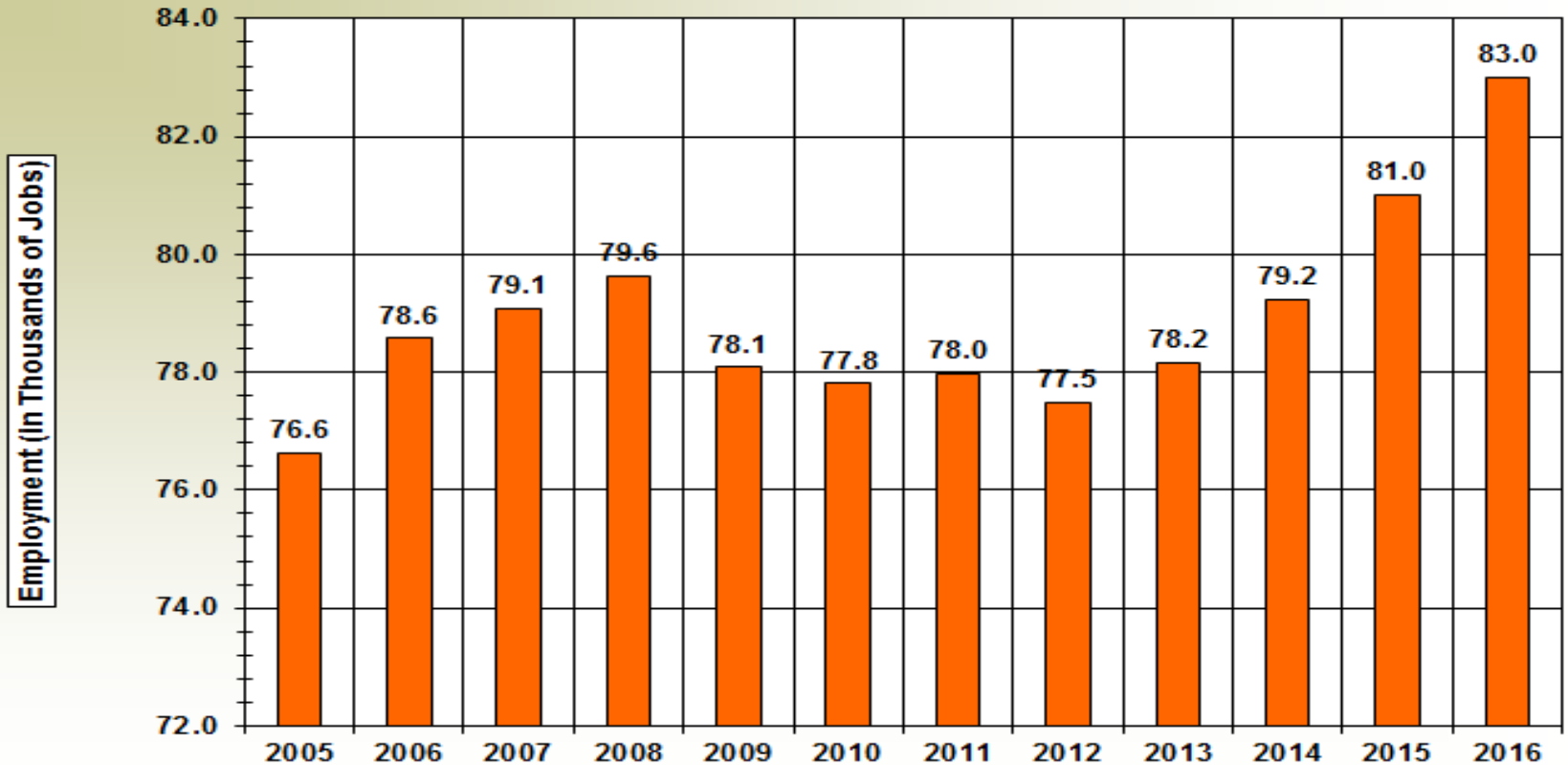
# Yakima County's Civilian Labor Force: From December 2015-December 2016

	Preliminary	Revised	Dec-15	Dec-15
Yakima County	Dec-16	Dec-15	Dec-16	Dec-16 %
<b>Labor force and unemployment</b>				
Civilian labor force	120,525	118,573	1,952	1.6%
Resident employment	108,547	106,381	2,166	2.0%
Unemployment	11,978	12,192	-214	-1.8%
Unemployment rate	9.9	10.3	-0.4	

# Labor Force Changes in Yakima County and Washington in the last twelve months

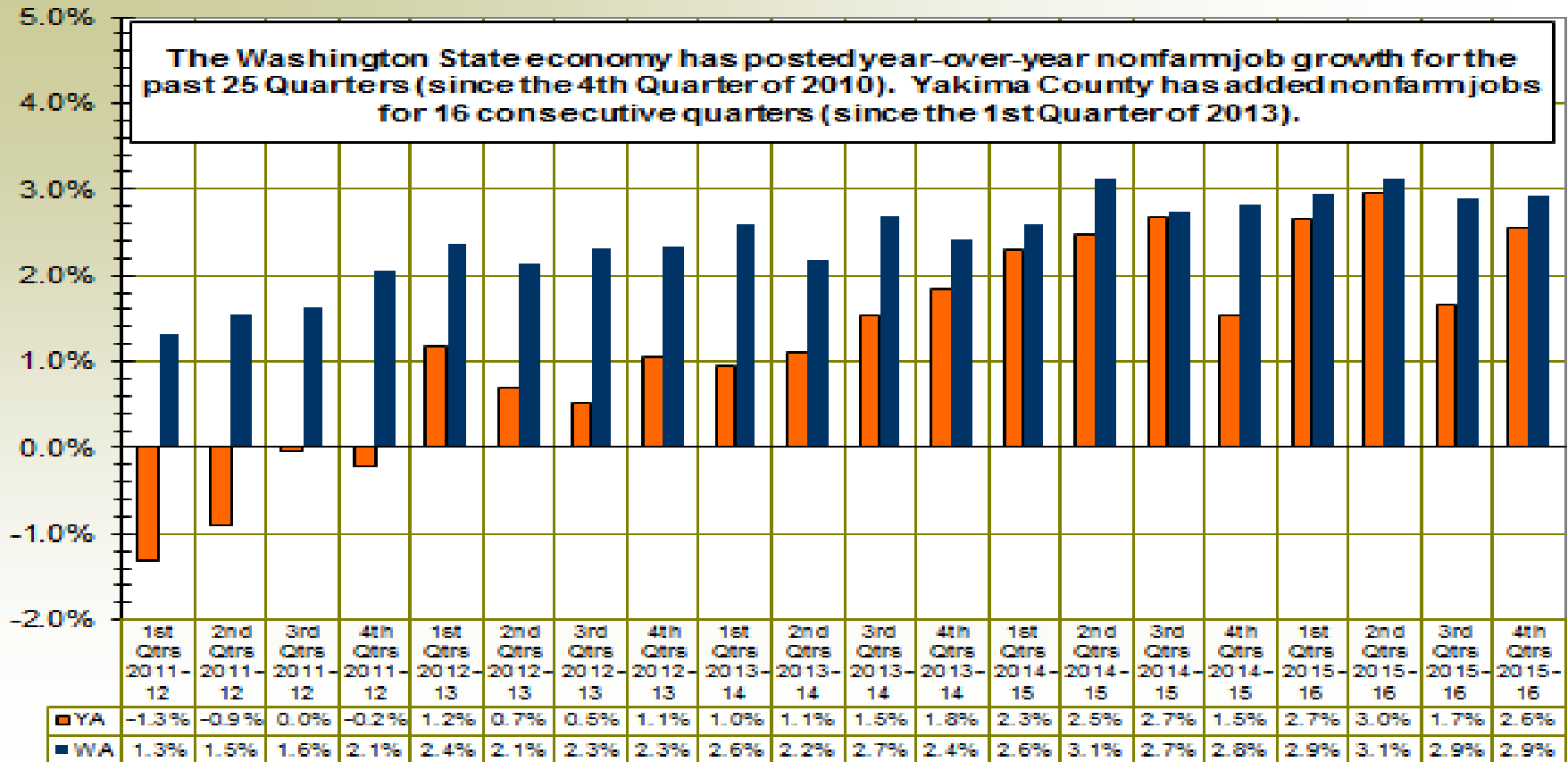


# Yakima County: Total nonfarm employment from 2005-2016

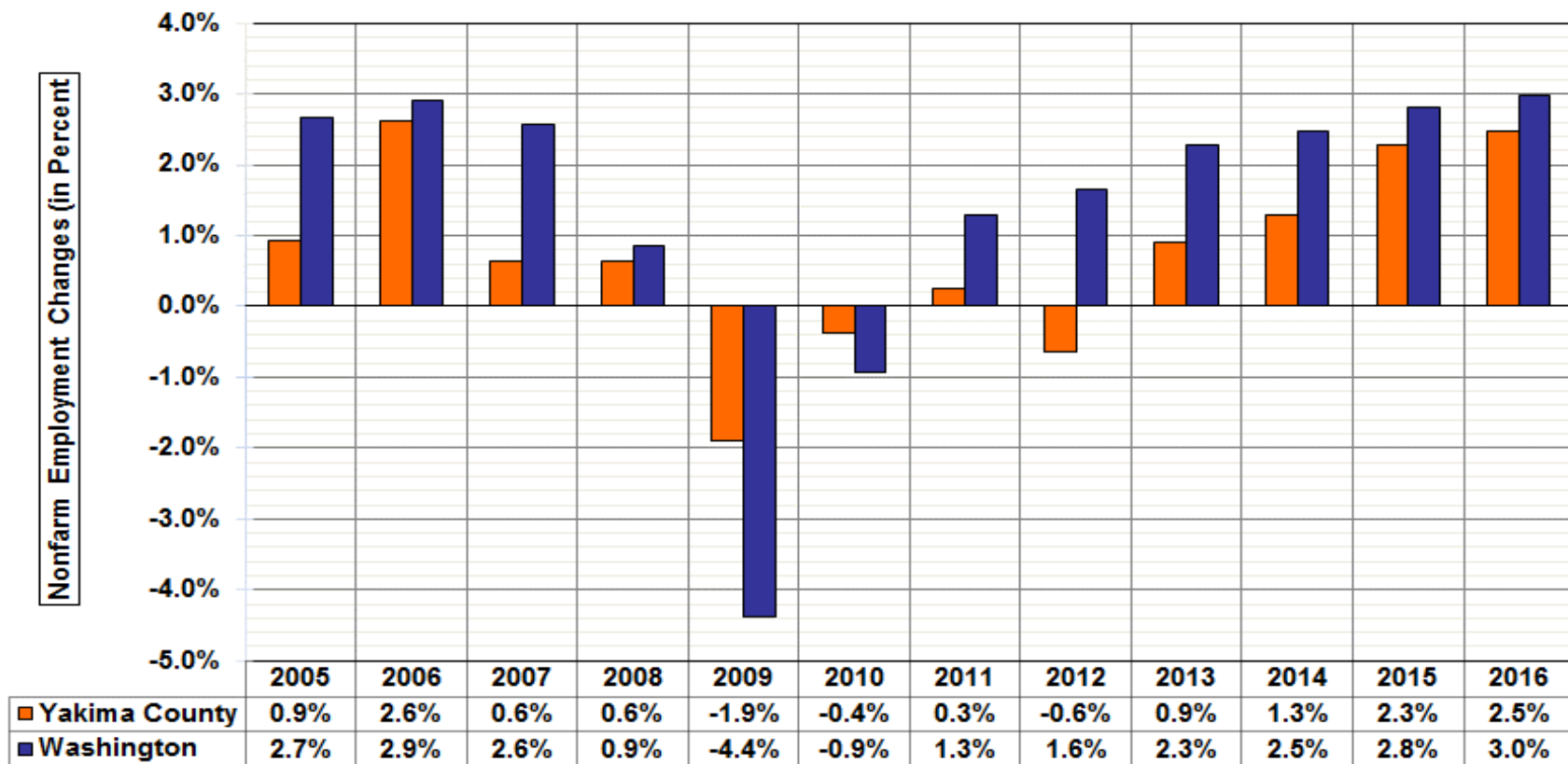


Source: CES Data, LMPA, ESD

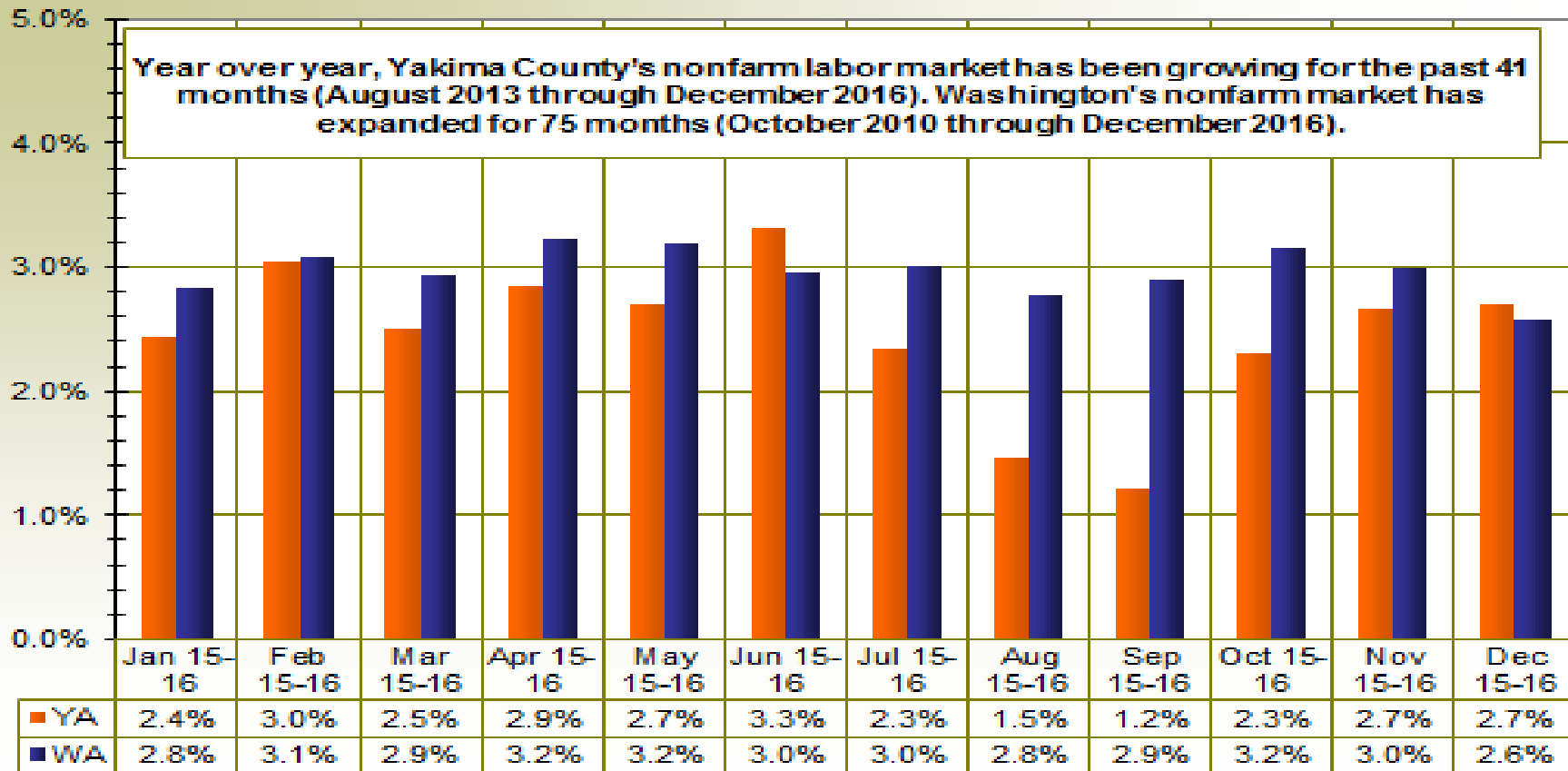
# Yakima County and Washington: Nonfarm employment changes during the past 20 quarters (i.e., 2012-2016)



# Yakima County and Washington: Nonfarm employment changes during the last 12 years (2005-2016)



# Nonfarm employment changes in Yakima County and Washington in the last twelve months

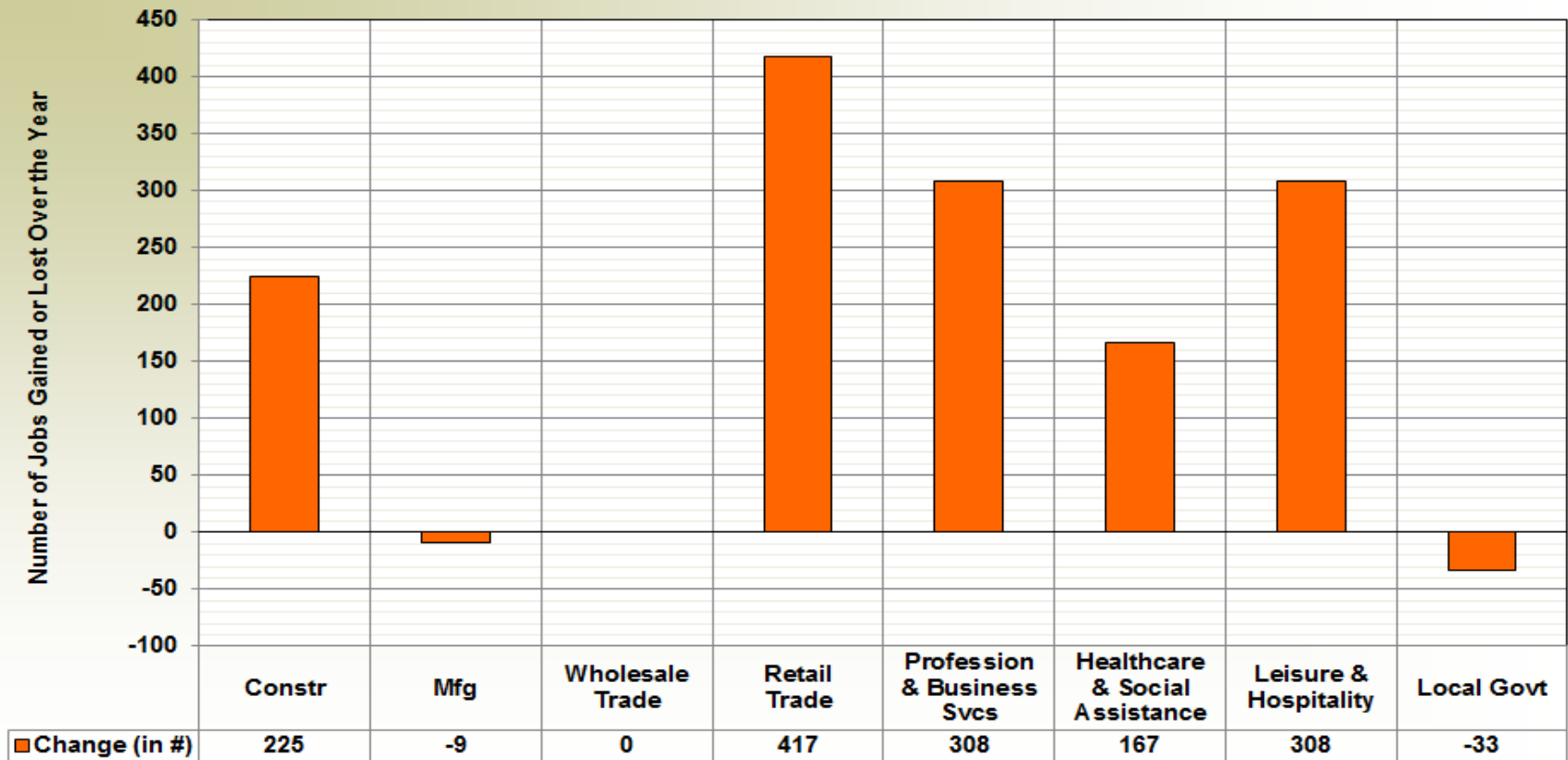


# Yakima County - Nonfarm job growth in major industries from 2015 to 2016

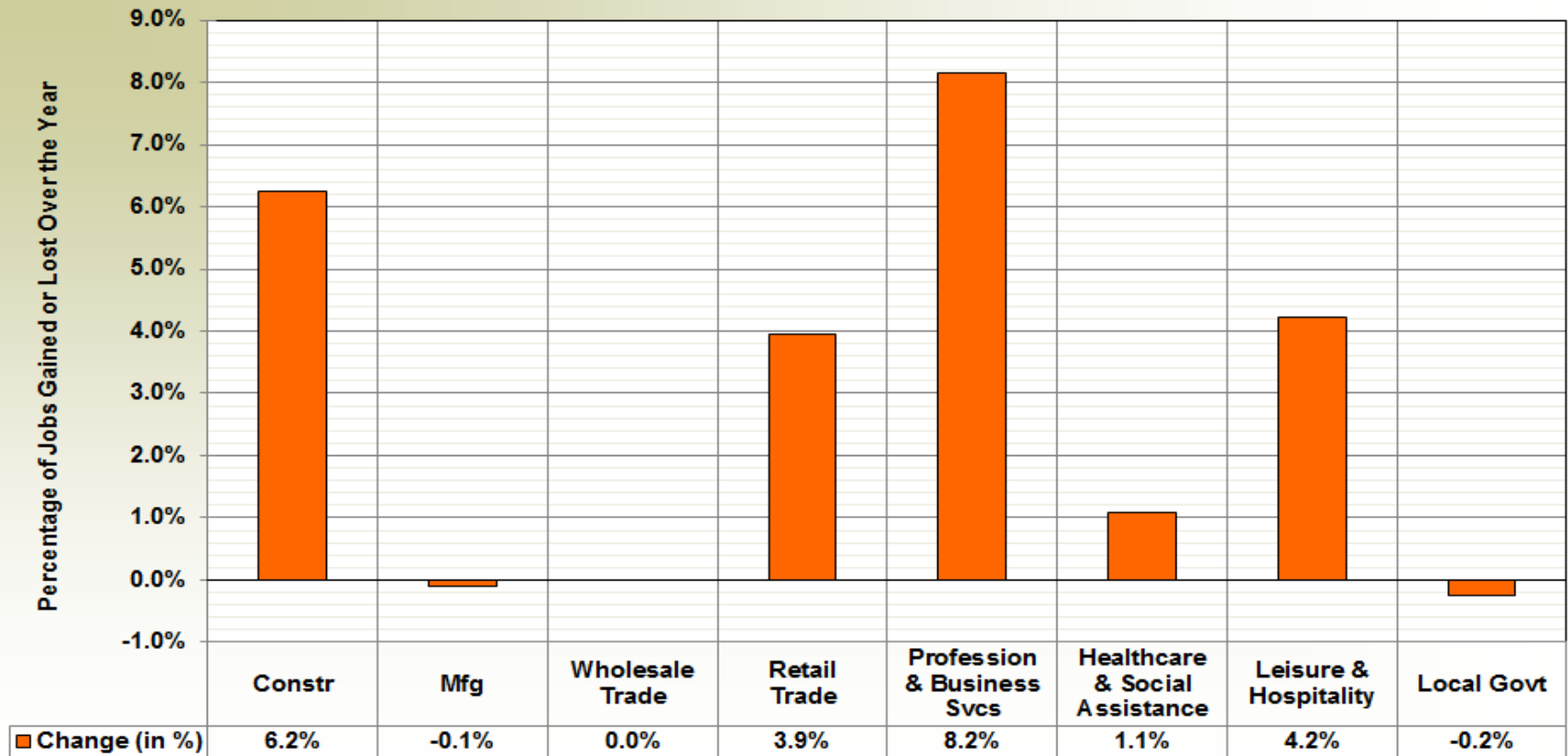
Industry	Ann. Avg. Employment in 2015	Ann. Avg. Employment in 2016	Job Change	Percent Change
Total Nonfarm	81.0	83.0	2.0	2.5%
Total Private	63.8	65.8	2.0	3.1%
Goods Producing	12.0	12.2	0.2	1.8%
Mining, Logging, and Construction	3.6	3.8	0.2	6.2%
Manufacturing	8.4	8.4	(0.0)	-0.1%
Nondurable Goods	5.4	5.2	(0.2)	-3.8%
Service Providing	69.0	70.8	1.8	2.6%
Private Service Providing	51.8	53.5	1.8	3.4%
Trade, Transportation, and Utilities	18.8	19.3	0.5	2.7%
Wholesale Trade	4.6	4.6	0.0	0.0%
Retail Trade	10.6	11.0	0.4	3.9%
Transportation and Utilities	3.6	3.7	0.1	2.5%
Professional and Business Services	3.8	4.1	0.3	8.2%
Education and Health Services	16.2	16.8	0.6	4.0%
Health Care and Social Assistance	15.3	15.5	0.2	1.1%
Leisure and Hospitality	7.3	7.6	0.3	4.2%
Food Services	5.5	5.5	0.1	1.2%
Government	17.2	17.2	0.0	0.1%
Federal Government	1.2	1.2	0.0	0.7%
State Government	2.7	2.8	0.0	1.9%
Local Government	13.3	13.3	(0.0)	-0.2%



# Summary of job gains/losses (in #) in Yakima County nonfarm industries from 2015 to 2016



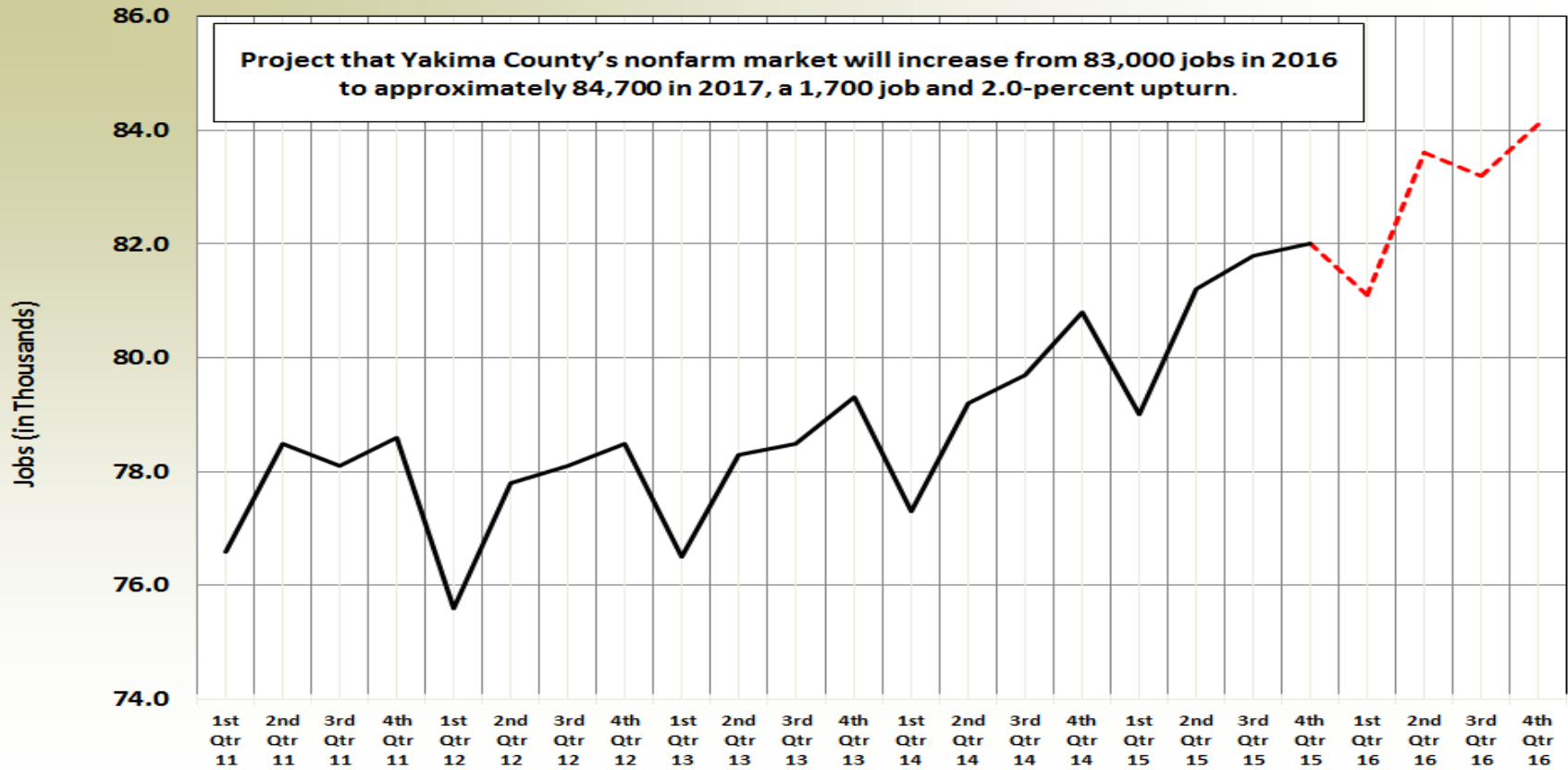
# Summary of job gains/losses (in %) in Yakima County nonfarm industries from 2015 to 2016



# Yakima County: Comparison of 2016 Employment Projections (on 8 Feb 16) with Revised Data (on 13 Mar 17)

<b>On 8 February 2016:</b>					
	1st Qtr	2nd Qtr	3rd Qtr	4th Qtr	An Avg
2016 (Projected)	80.6	82.5	83.0	83.8	82.5
2015	79.7	81.7	81.7	82.5	81.4
2015-2016 (in #)	0.8	0.7	1.3	1.3	1.0
2015-2016 (in %)	1.1%	0.9%	1.6%	1.5%	1.3%
<b>On 13 March 2017:</b>					
	1st Qtr	2nd Qtr	3rd Qtr	4th Qtr	An Avg
2016 (Actual)	81.1	83.6	83.2	84.1	83.0
2015	79.0	81.2	81.8	82.0	81.0
2015-2016 (in #)	2.1	2.4	1.4	2.1	2.0
2015-2016 (in %)	2.7%	3.0%	1.7%	2.6%	2.5%

# Projected nonfarm job growth in Yakima County for 1<sup>st</sup>-4<sup>th</sup> Quarters 2017



# Yakima County's nonfarm job growth rate of 2.5 percent in 2016 was the highest since the 2.6 percent growth pace in 2006

- *Preliminary data* indicate Yakima County's not seasonally adjusted unemployment rate edged upward from 8.0 in 2015 to 8.1 percent in 2016.
- Yakima County's civilian labor force (CLF) increased from 122,052 residents in 2015 to 125,184 in 2016 (up 2.6 percent) *but the number of unemployed also grew during 2016* (by 4.3 percent).
- Nonfarm employment averaged 83,000 in 2016, up 2,000 jobs and 2.5 percent since 2015. Construction, retail trade, professional and business services, health care, and leisure and hospitality accounted for 70 percent of these new jobs.

# Yakima County – 2016 in Review

## Questions?

### **Donald W. Meseck**

Regional Labor Economist for Adams, Chelan, Douglas, Grant, Kittitas,  
Okanogan, and Yakima Counties  
Labor Market and Performance Analysis (LMPA)  
Employment Security Department

Address: 1205 Ahtanum Ridge Drive, Union Gap, WA 98903

Phone: (509) 573-4564

Email: [dmeseck@esd.wa.gov](mailto:dmeseck@esd.wa.gov)

Website: <https://esd.wa.gov/labormarketinfo>