



# Yakima County Economy – 2014 in Review

For: Greater Yakima Chamber of Commerce

**Donald W. Meseck**  
**Regional Labor Economist**

February 9, 2015

# Today's presentation

## **Unemployment rates and labor force trends in Yakima County through 2014**

- Slides 3-6

## **Quarterly Census of Employment and Wage (QCEW) summaries for Yakima County in 2013**

- Slides 7-11

## **Nonfarm employment trends through 2014**

- Slides 12-18

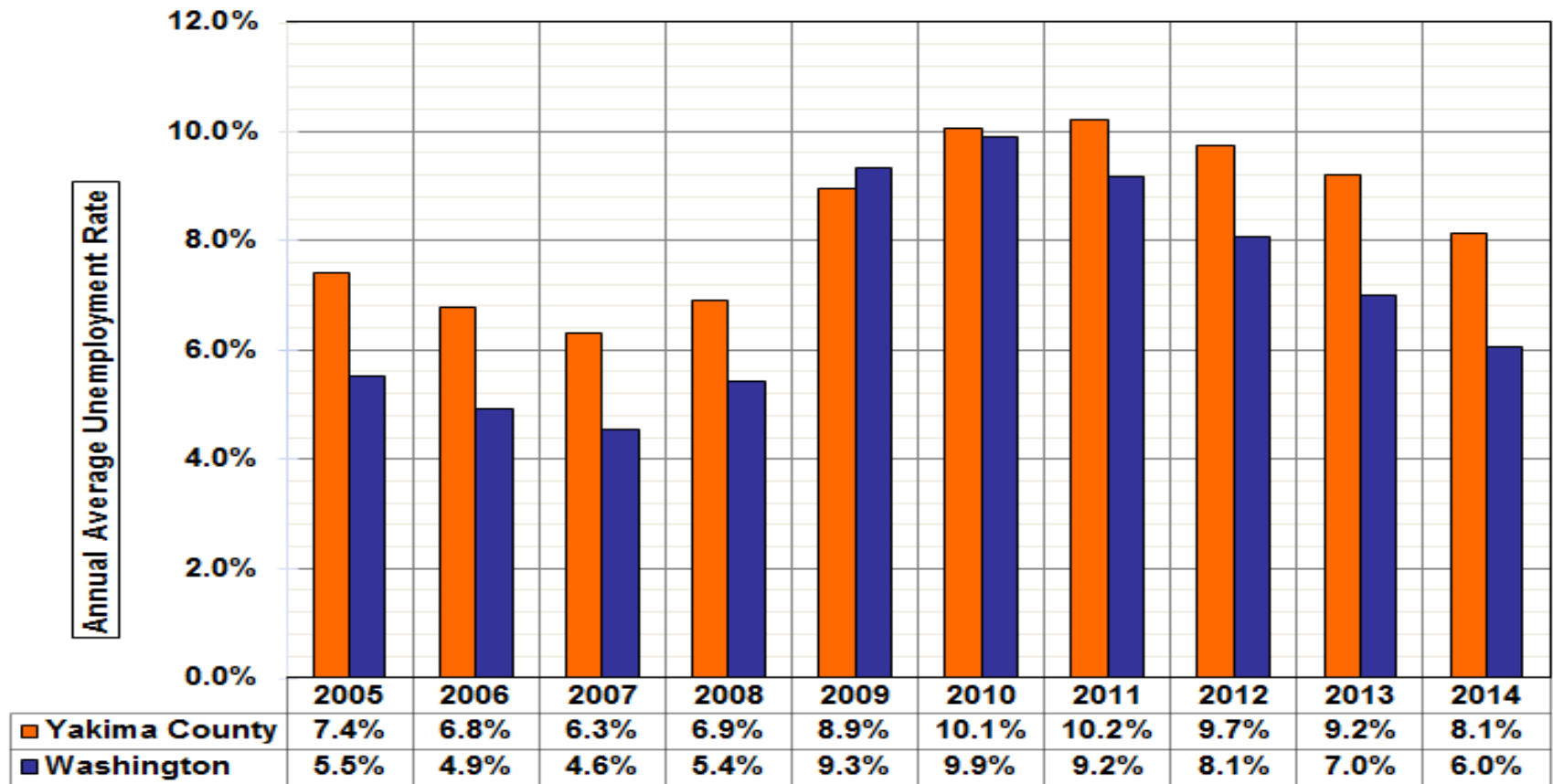
## **Employment projections for Yakima County**

- Slides 19-20

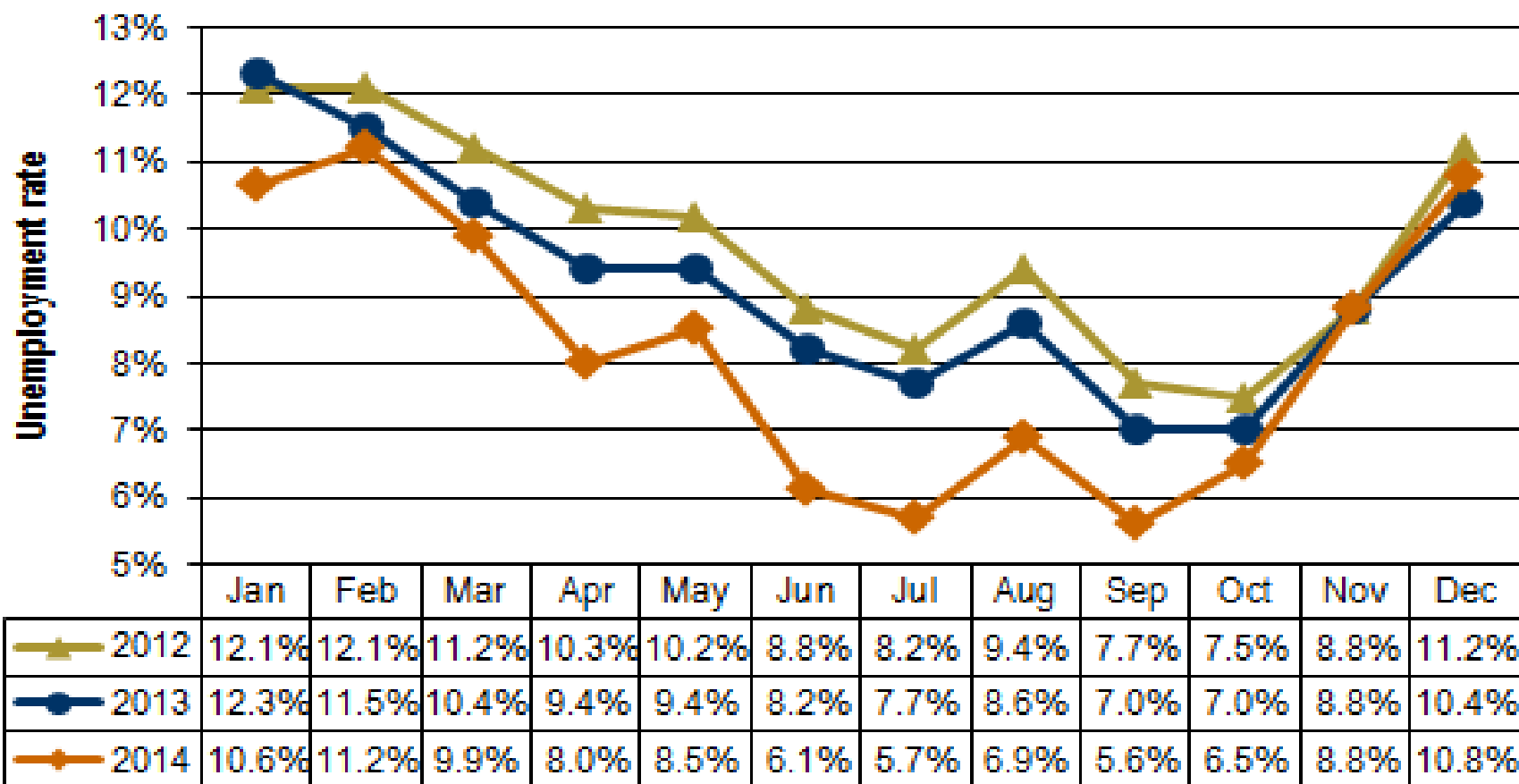
## **Summary and Questions**

- Slides 21-22

# Annual Average Unemployment Rates in Yakima County and in Washington from 2005-2014



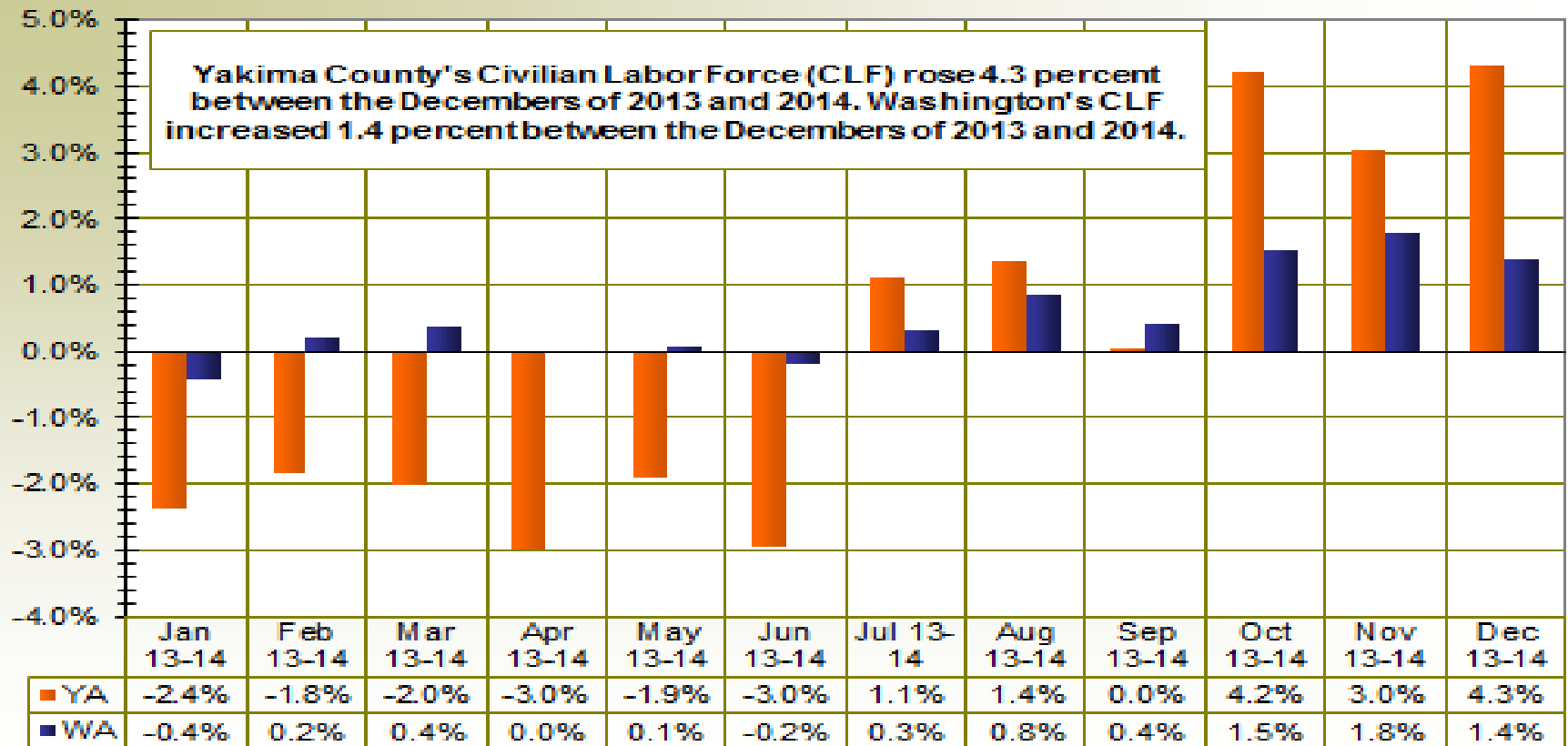
# Unemployment Rates in Yakima County: From January 2012-December 2014



# Yakima County's Civilian Labor Force: From December 2013-December 2014

				Change		
	Preliminary	Revised	Revised	Nov-14	Dec-13	Dec-13
Yakima County	Dec-14	Nov-14	Dec-13	Dec-14	Dec-14	Dec-14 %
Labor force and unemployment						
Civilian labor force	122,210	124,270	117,140	-2,060	5,070	4.3%
Resident employment	109,060	113,330	104,920	-4,270	4,140	3.9%
Unemployment	13,150	10,940	12,220	2,210	930	7.6%
Unemployment rate	10.8	8.8	10.4	2.0	0.4	

# Labor Force Changes in Yakima County and Washington in the last twelve months



# Analyzed county-level QCEW data for 22 industries/sectors

## 19 private-industry sectors

**NAICS 11** (Agriculture, forestry and fishing)

**NAICS 21** (Mining)

**NAICS 22** (Utilities)

**NAICS 23** (Construction)

**NAICS 31-33** (Manufacturing)

**NAICS 42** (Wholesale trade)

**NAICS 44-45** (Retail trade)

**NAICS 48-49** (Transportation and warehousing)

**NAICS 51** (Information)

**NAICS 52** (Finance and insurance)

**NAICS 53** (Real estate and rentals)

**NAICS 54** (Professional and business services)

**NAICS 55** (Management of companies)

**NAICS 56** (Administrative and waste services)

**NAICS 61** (Private education services)

**NAICS 62** (Health services)

**NAICS 71** (Arts, entertainment and recreation)

**NAICS 72** (Accommodation and food services)

**NAICS 81** (Other services)

## Three government sectors

Federal government

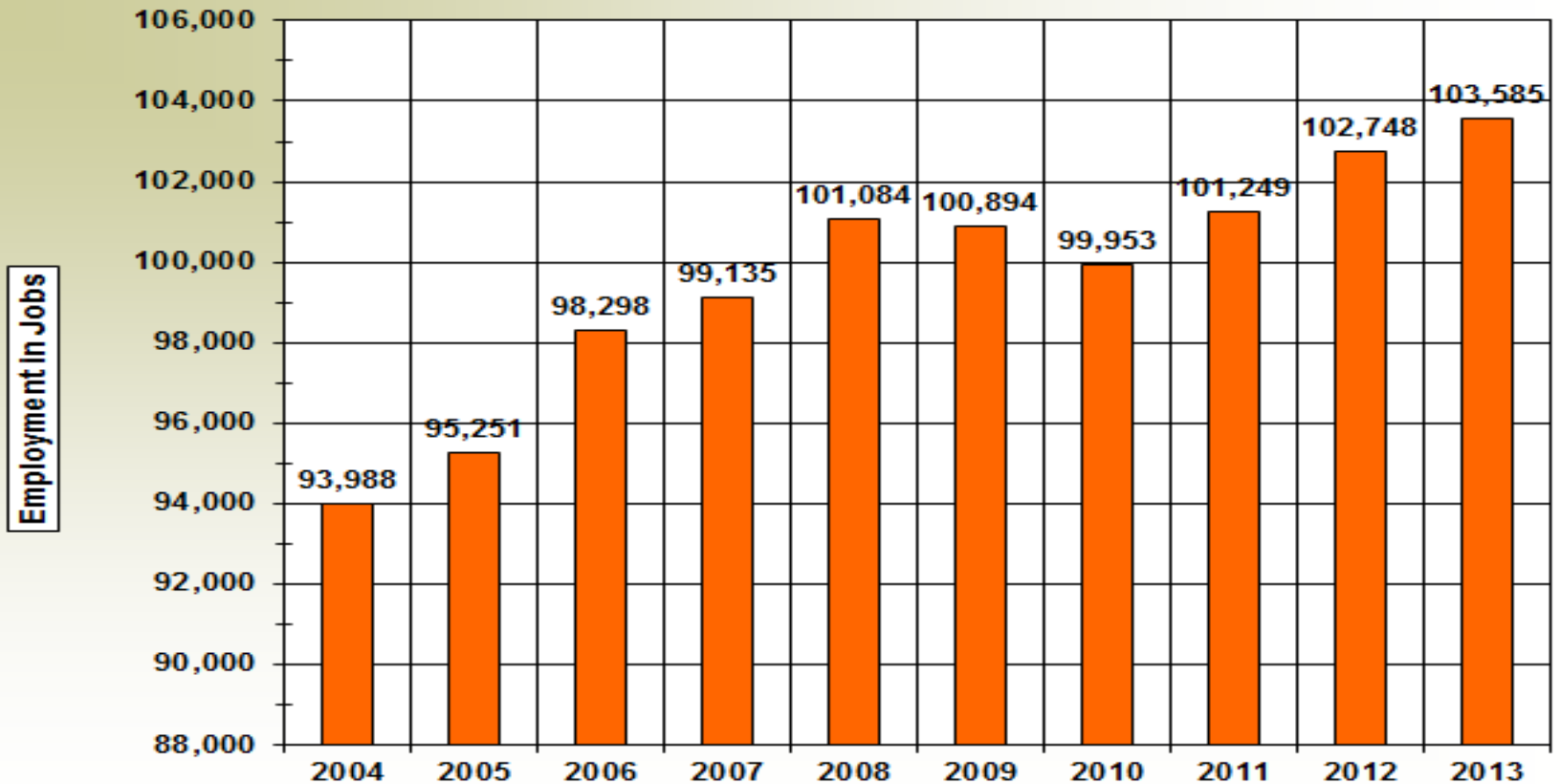
State government

Local government

\* North American Industry Classification System (NAICS)

QCEW is the Quarterly Census of Employment and Wages, a  
U.S. Bureau of Labor Statistics data set.

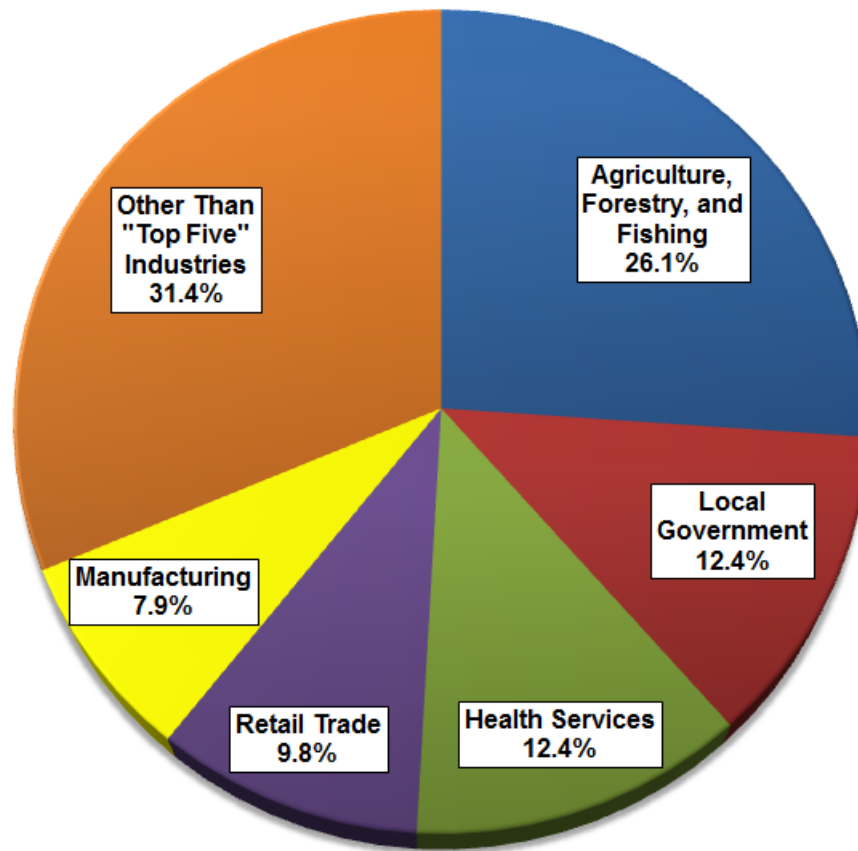
# Yakima County: Total covered employment from 2004-2013



Source: QCEW Data



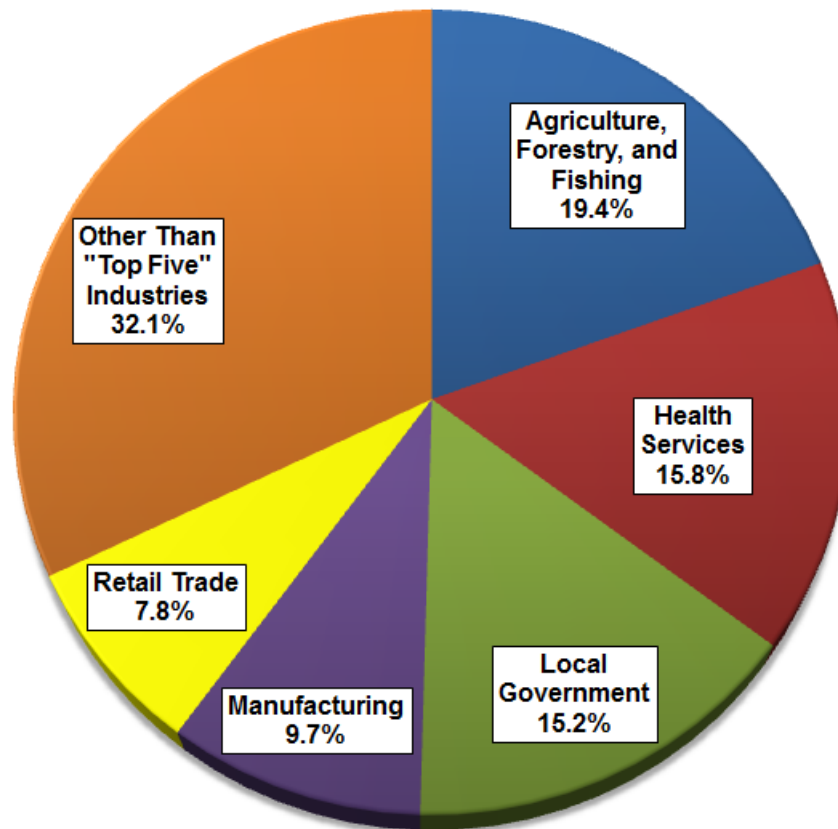
# Yakima County: Top 5 industries by employment in 2013



Yakima County: Top 5 Industries by Employment in 2013	
Industry	Number of Jobs
Agriculture, Forestry, and Fishing)	27,044
Local Government	12,863
Health Services)	12,807
Retail Trade	10,172
Manufacturing	8,222
Other Than "Top Five" Industries	32,477
Total Covered Employment	103,585

Source: QCEW Data

# Yakima County: Top 5 industries by wages in 2013



Yakima County: Top Five Industries by Wages in 2013	
Industry	Number of Jobs
Agriculture, Forestry, and Fishing	\$679,972,762
Health Services	\$552,868,150
Local Government	\$531,149,948
Manufacturing	\$337,563,895
Retail Trade	\$272,302,885
Other Than "Top Five" Industries	\$1,123,946,600
Total Covered Wages	\$3,497,804,240

Source: QCEW Data

# Yakima County in 2013: Summary of “Top 5” industries

**Total covered wages = \$3.50 billion**

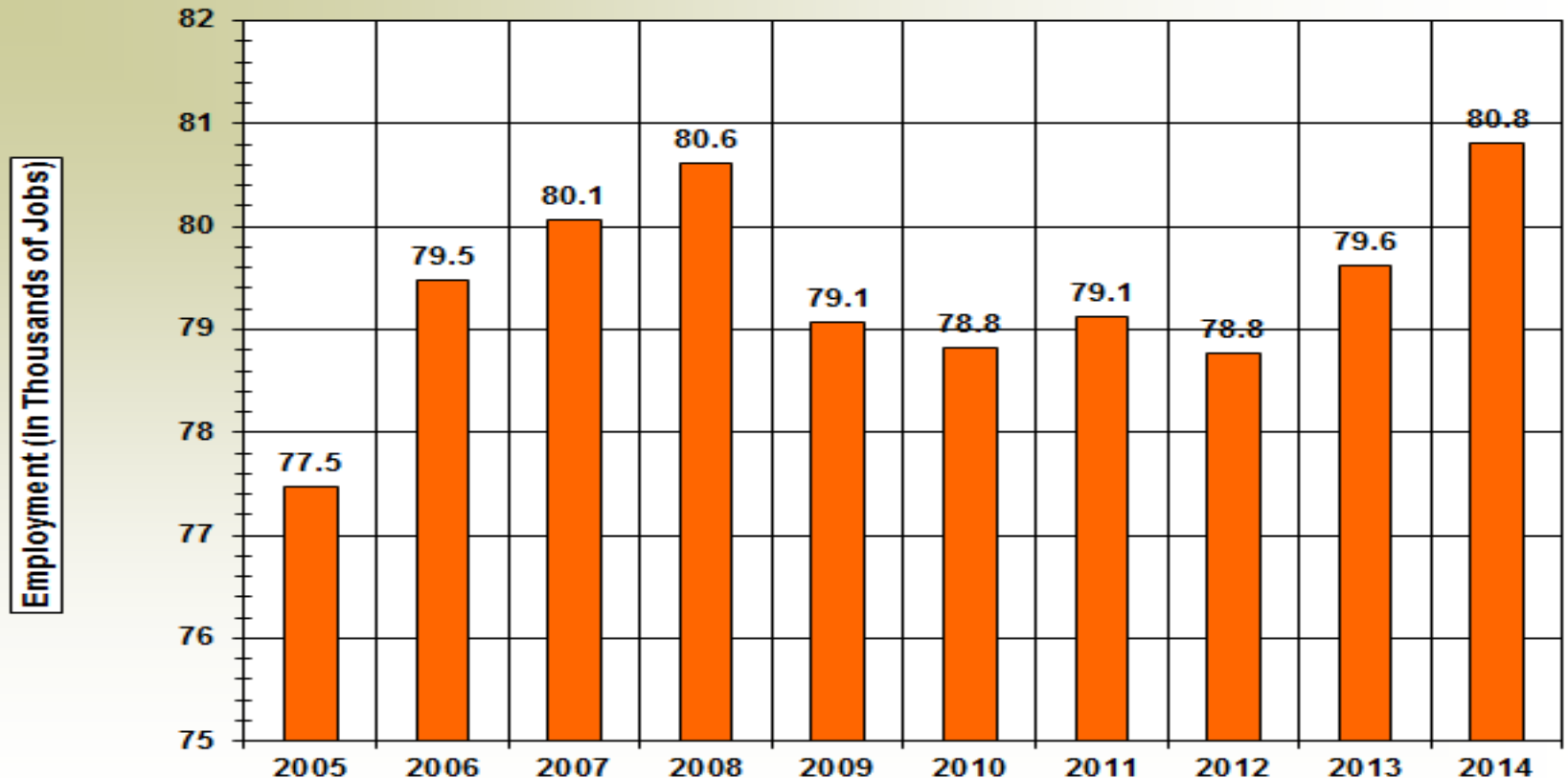
**Average annual employment = 103,585**

**Average annual wage = \$33,767**

**(Washington state average annual wage = \$53,030)**

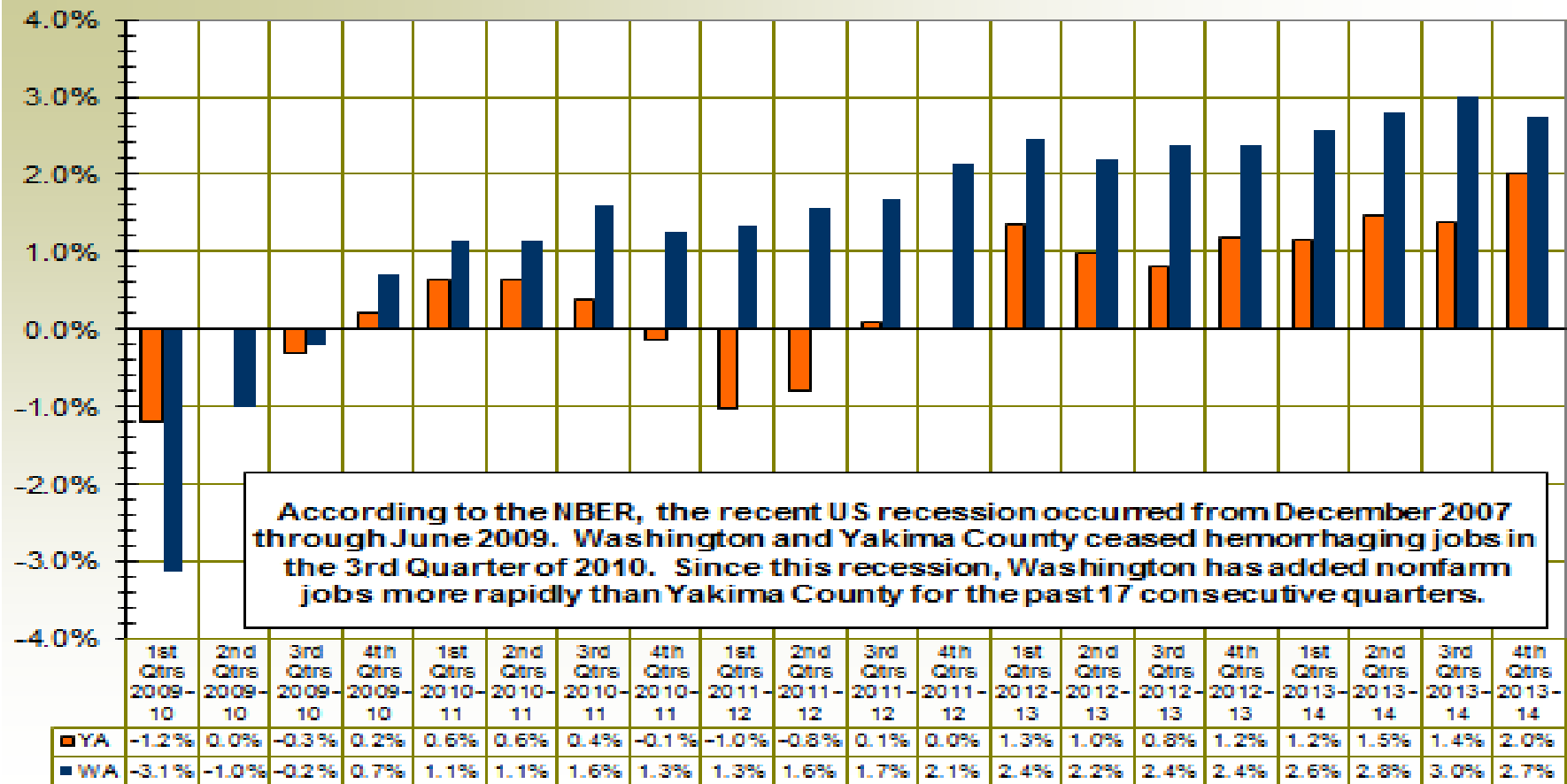
Industry	Percent of jobs (in Yakima County)	Percent of wages (in Yakima County)
Agriculture	26.1	19.4
Health services	12.4	15.8
Local government	12.4	15.2
Retail trade	9.8	7.8
Manufacturing	7.9	9.7

# Yakima County: Total nonfarm employment from 2005-2014

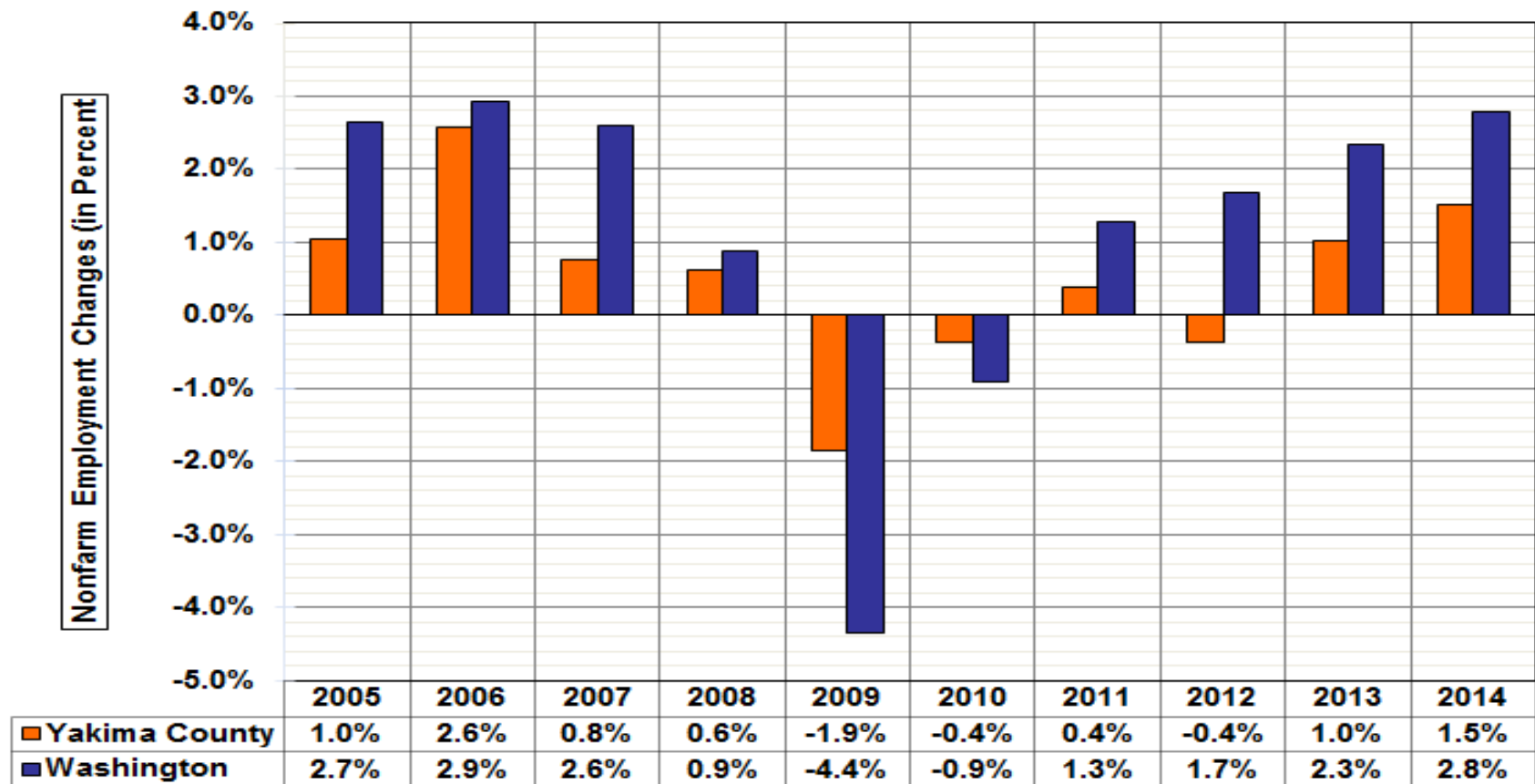


Source: CES Data, LMPA, ESD

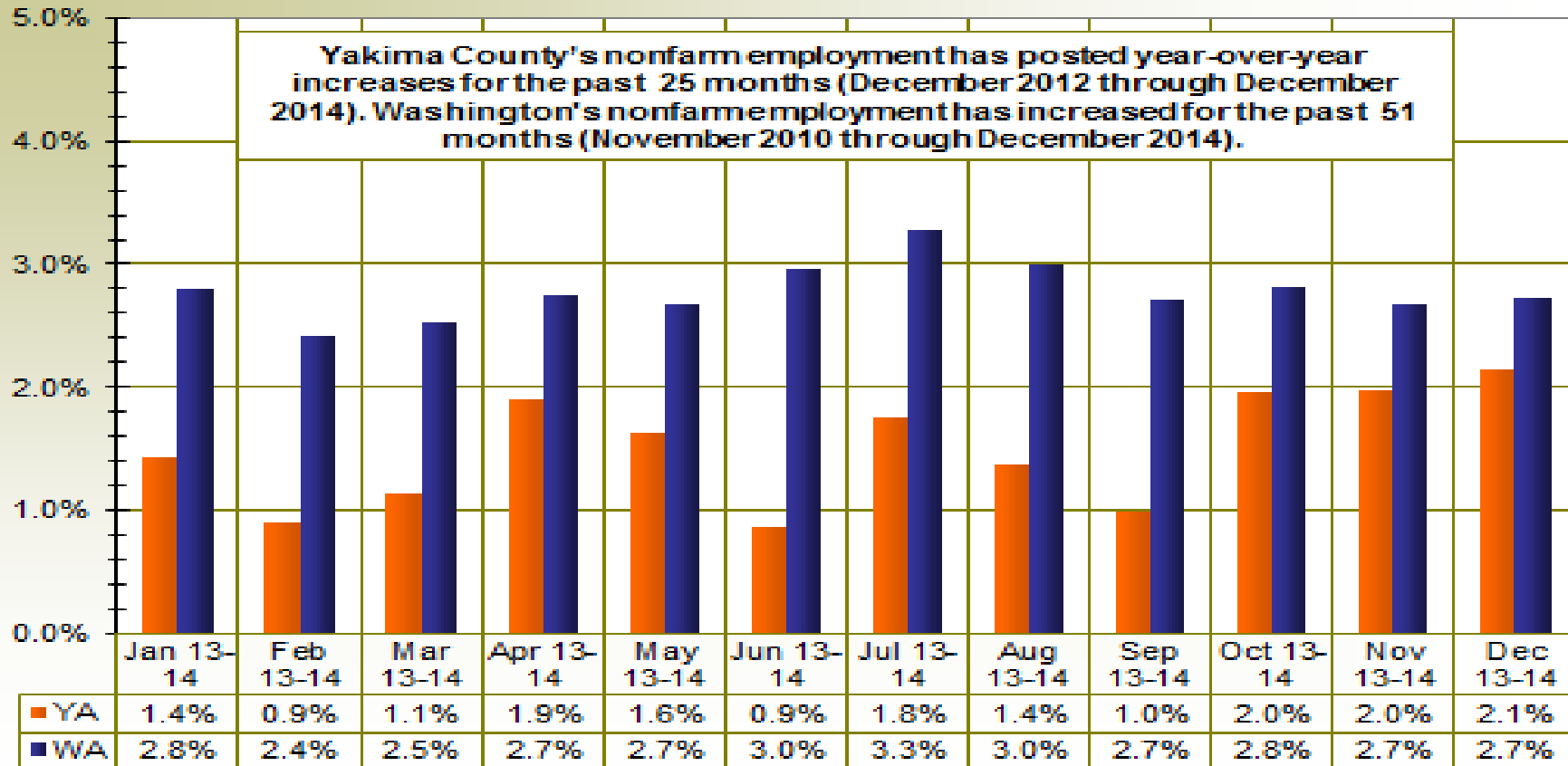
# Yakima County and Washington: Nonfarm employment changes during the last 20 quarters (i.e., 2010-2014)



# Yakima County and Washington: Nonfarm employment changes during the last 10 years (i.e., 2005-2014)



# Nonfarm employment changes in Yakima County and Washington in the last twelve months

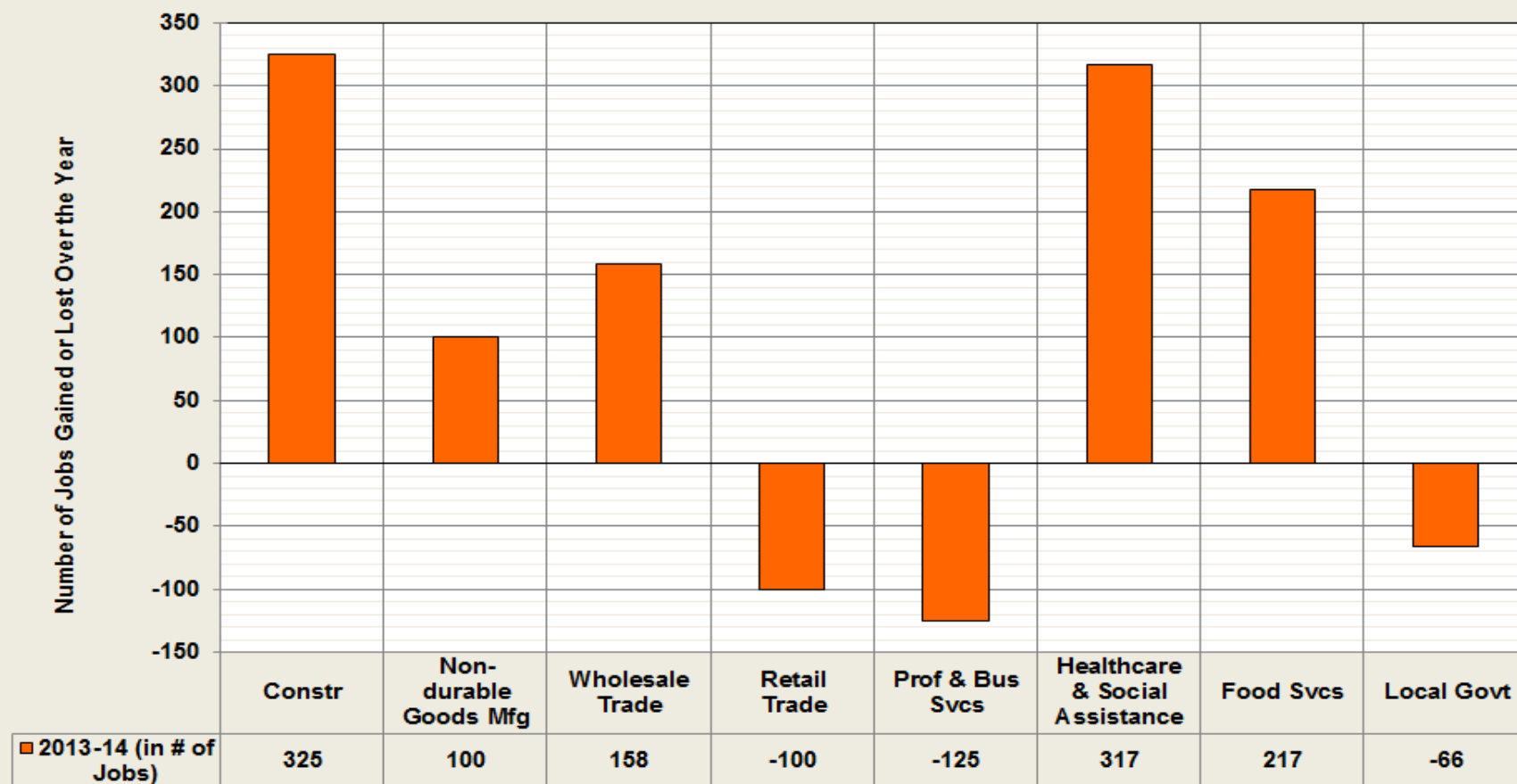


# Yakima County - Nonfarm job growth in major industries from 2013 to 2014

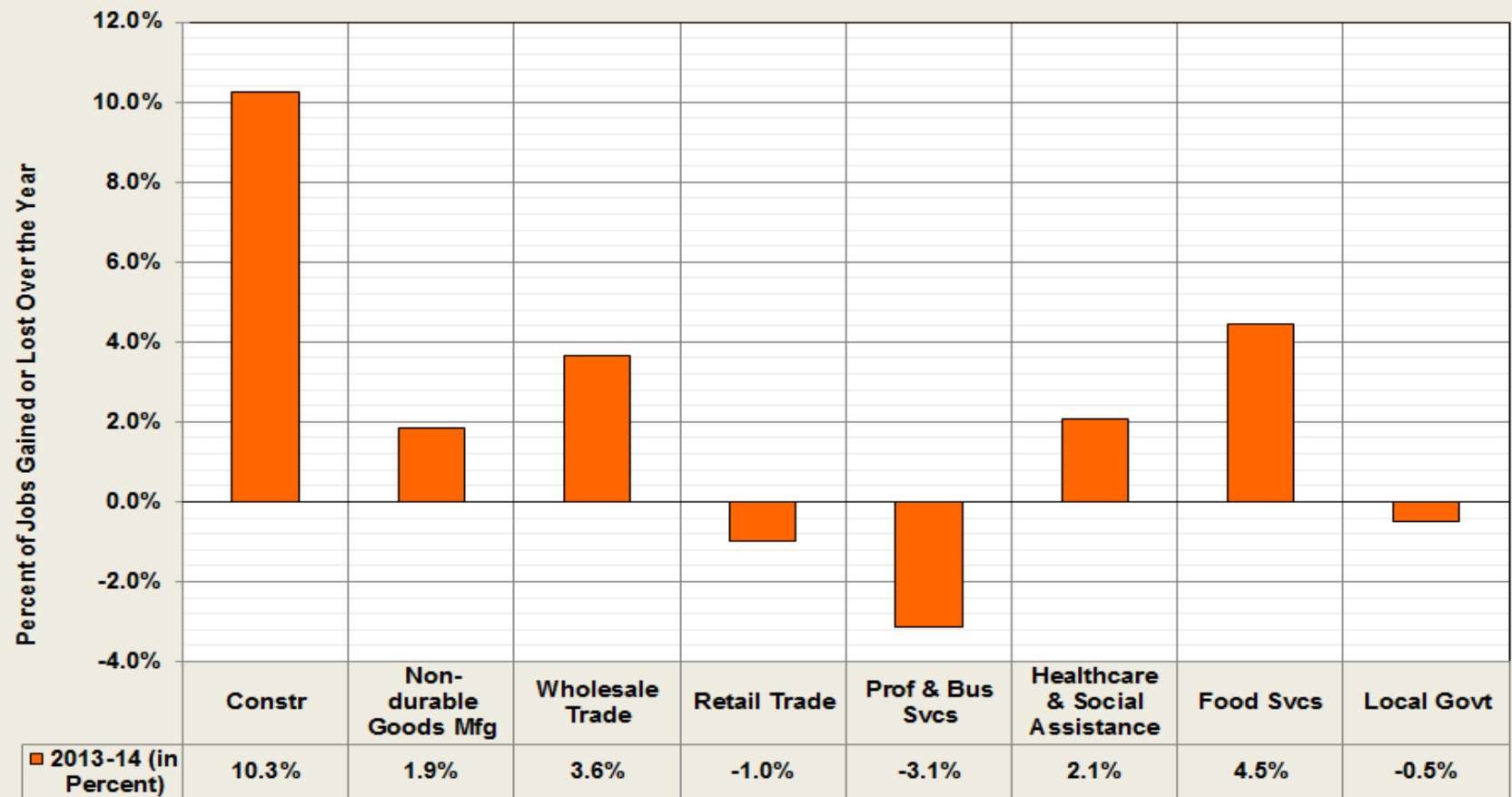
Industry	Ann. Avg. Employment in 2013	Ann. Avg. Employment in 2014	Job Change	Percent Change
Total Nonfarm	79.6	80.8	1.2	1.5%
Total Private	62.7	64.0	1.3	2.0%
Goods Producing	11.4	11.8	0.3	3.0%
Mining, Logging, and Construction	3.2	3.5	0.3	10.3%
Manufacturing	8.3	8.3	0.0	0.2%
Nondurable Goods	5.4	5.5	0.1	1.9%
Service Providing	68.2	69.1	0.9	1.3%
Private Service Providing	51.3	52.2	0.9	1.8%
Trade, Transportation, and Utilities	18.0	18.1	0.1	0.6%
Wholesale Trade	4.3	4.5	0.2	3.6%
Retail Trade	10.4	10.3	(0.1)	-1.0%
Transportation and Utilities	3.3	3.3	0.1	1.5%
Professional and Business Services	4.0	3.9	(0.1)	-3.1%
Education and Health Services	16.4	16.7	0.3	1.9%
Health Care and Social Assistance	15.3	15.6	0.3	2.1%
Leisure and Hospitality	6.7	6.9	0.2	3.1%
Food Services	4.9	5.1	0.2	4.5%
Government	16.9	16.9	(0.1)	-0.3%
Federal Government	1.2	1.2	0.0	1.4%
State Government	2.7	2.7	(0.0)	-0.3%
Local Government	13.0	13.0	(0.1)	-0.5%



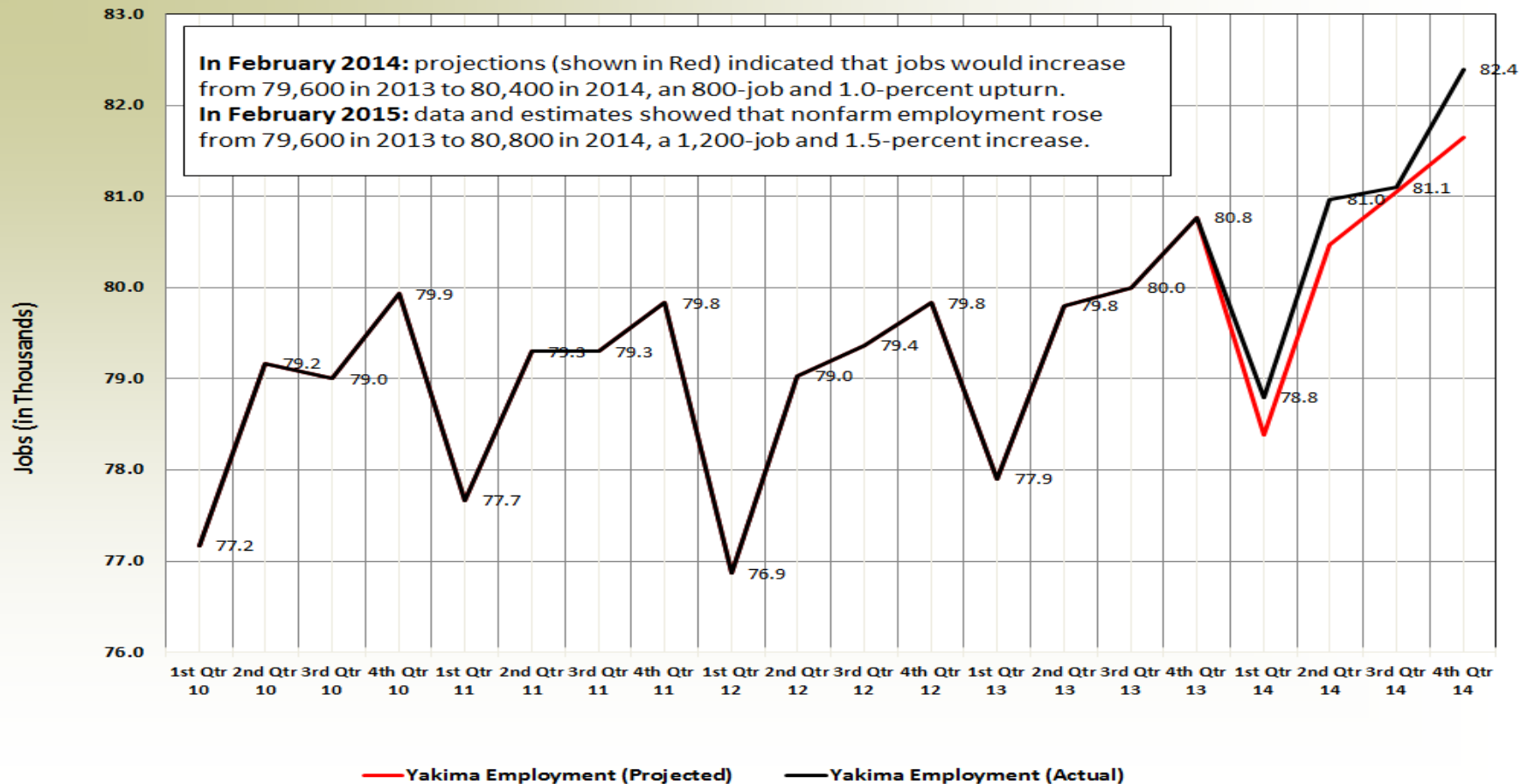
# Summary of job gains/losses (in #) in Yakima County nonfarm industries from 2013 to 2014



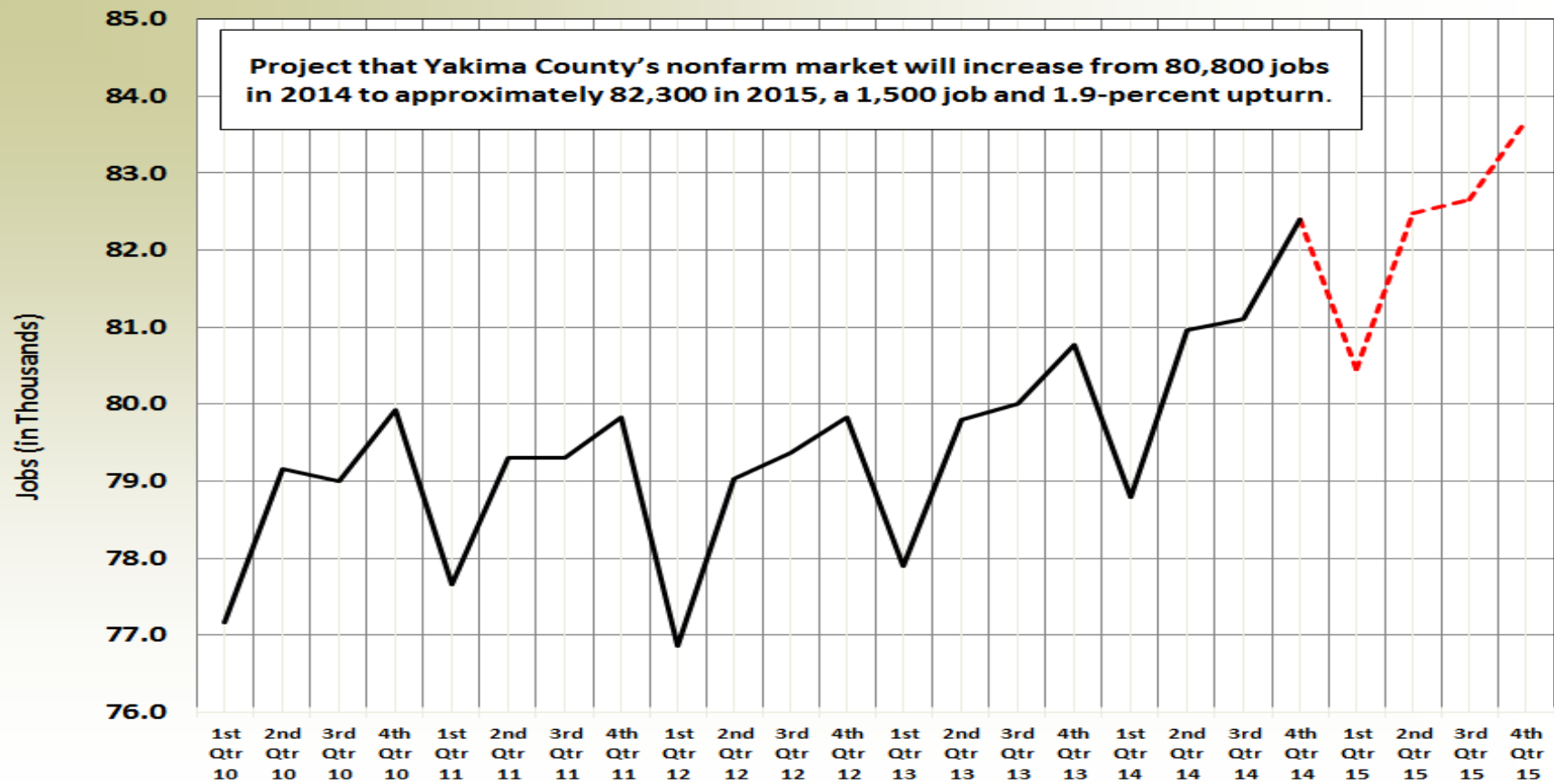
# Summary of job gains/losses (in %) in Yakima County nonfarm industries from 2013 to 2014



# Projected versus actual nonfarm job growth in Yakima County from 1<sup>st</sup>-4<sup>th</sup> Quarters 2014



# Projected nonfarm job growth in Yakima County for 1<sup>st</sup>-4<sup>th</sup> Quarters 2015



# Nonfarm job growth in Yakima County during 2014 was the best since 2006

- The not seasonally adjusted unemployment rate declined from 9.2 in 2013 to 8.1 percent in 2014.
- Yakima County's Civilian Labor Force (CLF) stabilized at 124,360 residents in 2013 and 2014. (The CLF contracted 1.1 percent between 2012 and 2013.)
- Nonfarm employment averaged 80,800 in 2014; adding 1,200 jobs since 2013, a 1.5 percent increase.
- Construction, healthcare, wholesale trade, and food services accounted for approximately 80 percent of the 1,200-job increase countywide during 2014.

# Yakima County – 2014 in Review

## Questions?

### **Donald W. Meseck**

Regional Labor Economist for Adams, Chelan, Douglas, Grant, Kittitas, Okanogan, and Yakima Counties

Labor Market and Performance Analysis (LMPA)

Employment Security Department

Address: 306 Division Street, Yakima, WA 98902

Phone: (509) 573-4564

Email: [dmeseck@esd.wa.gov](mailto:dmeseck@esd.wa.gov)

Website: <https://fortress.wa.gov/esd/employment>