

Yakima County Economy: 2017-in-Review

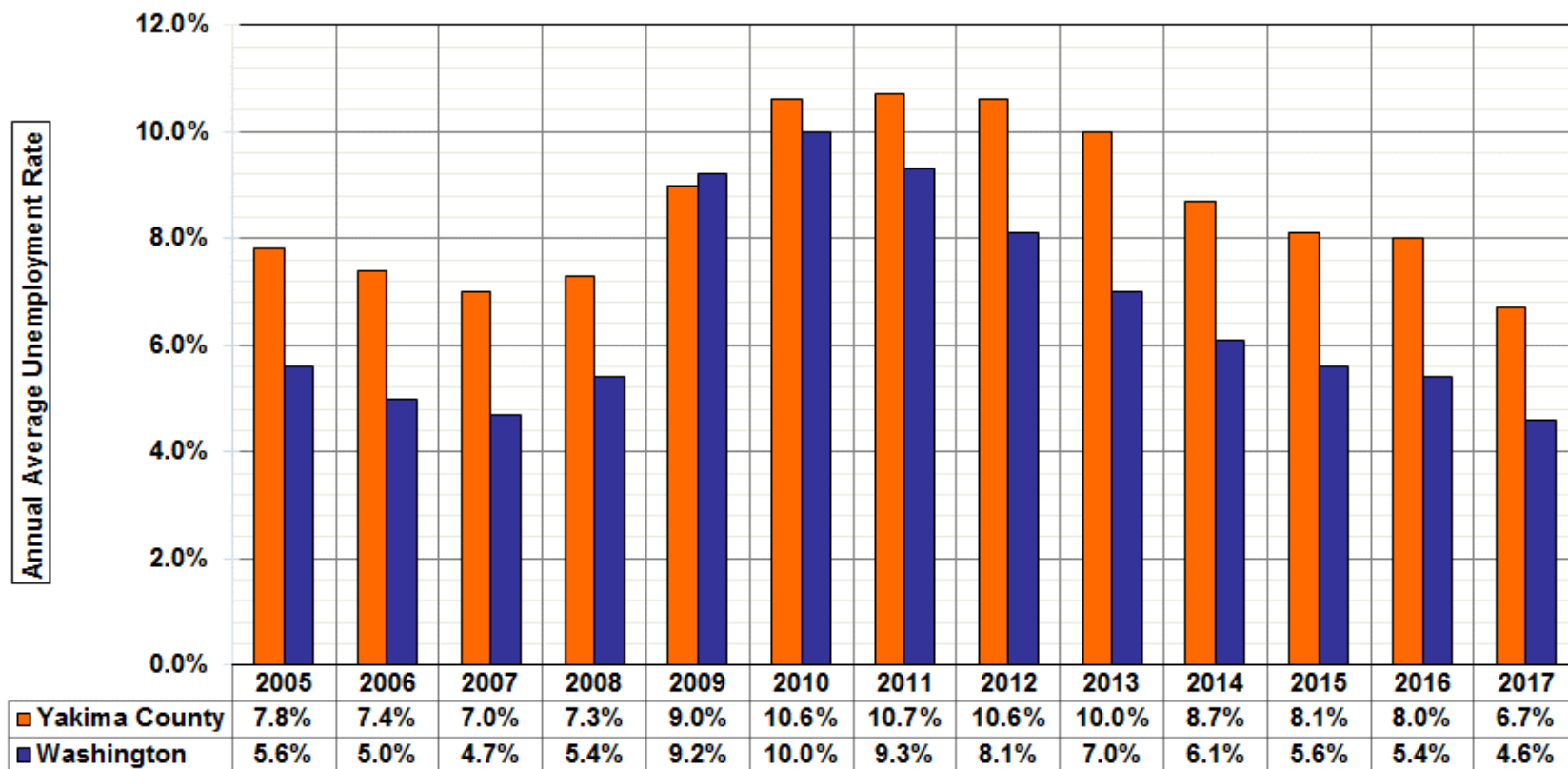
For: Greater Yakima Chamber of Commerce

By: Donald W. Meseck, Regional Labor Economist,
Washington State Employment Security Department

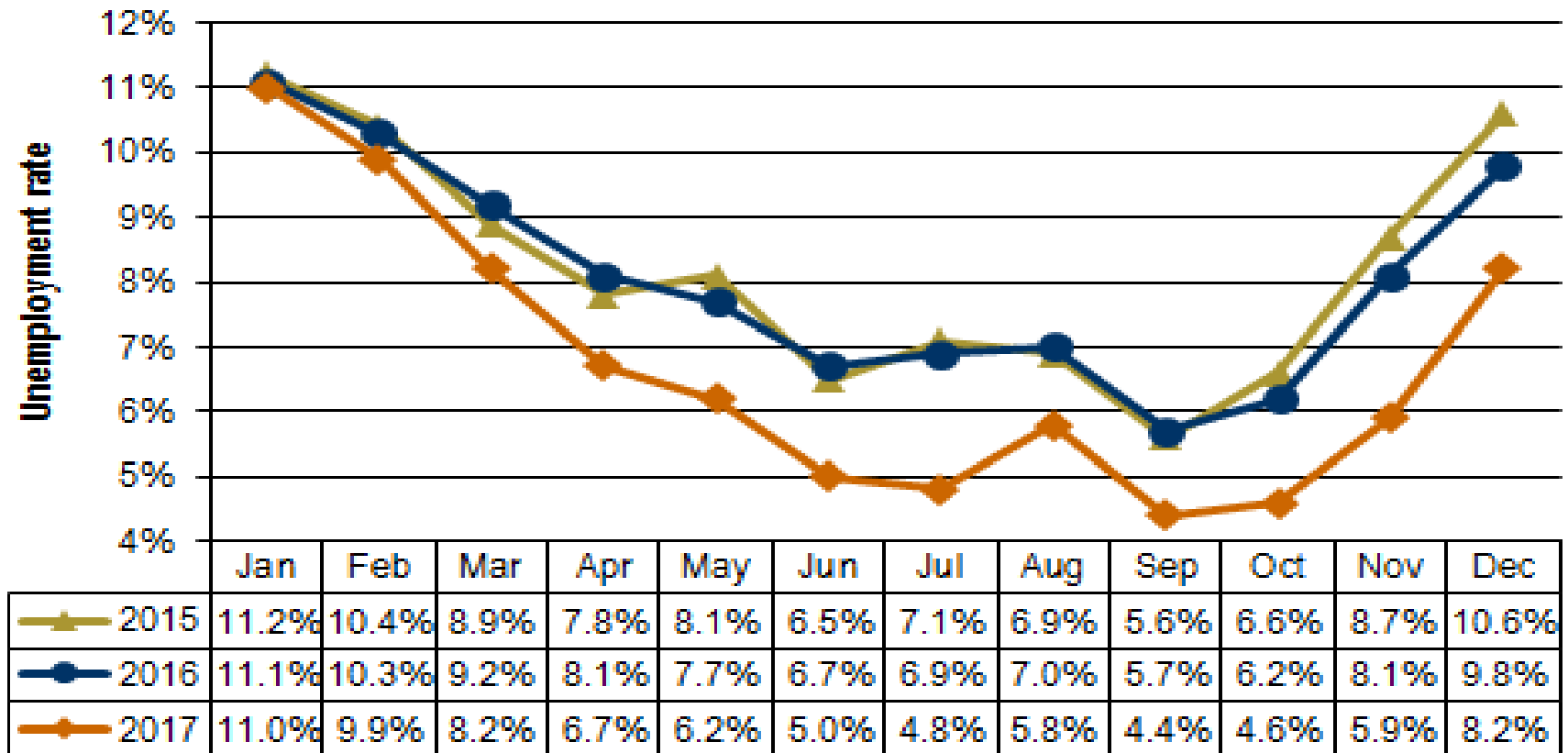
Date: February 12, 2018



Annual Average Unemployment Rates in Yakima County and in Washington from 2005-2017 (as of 23 Jan 18)



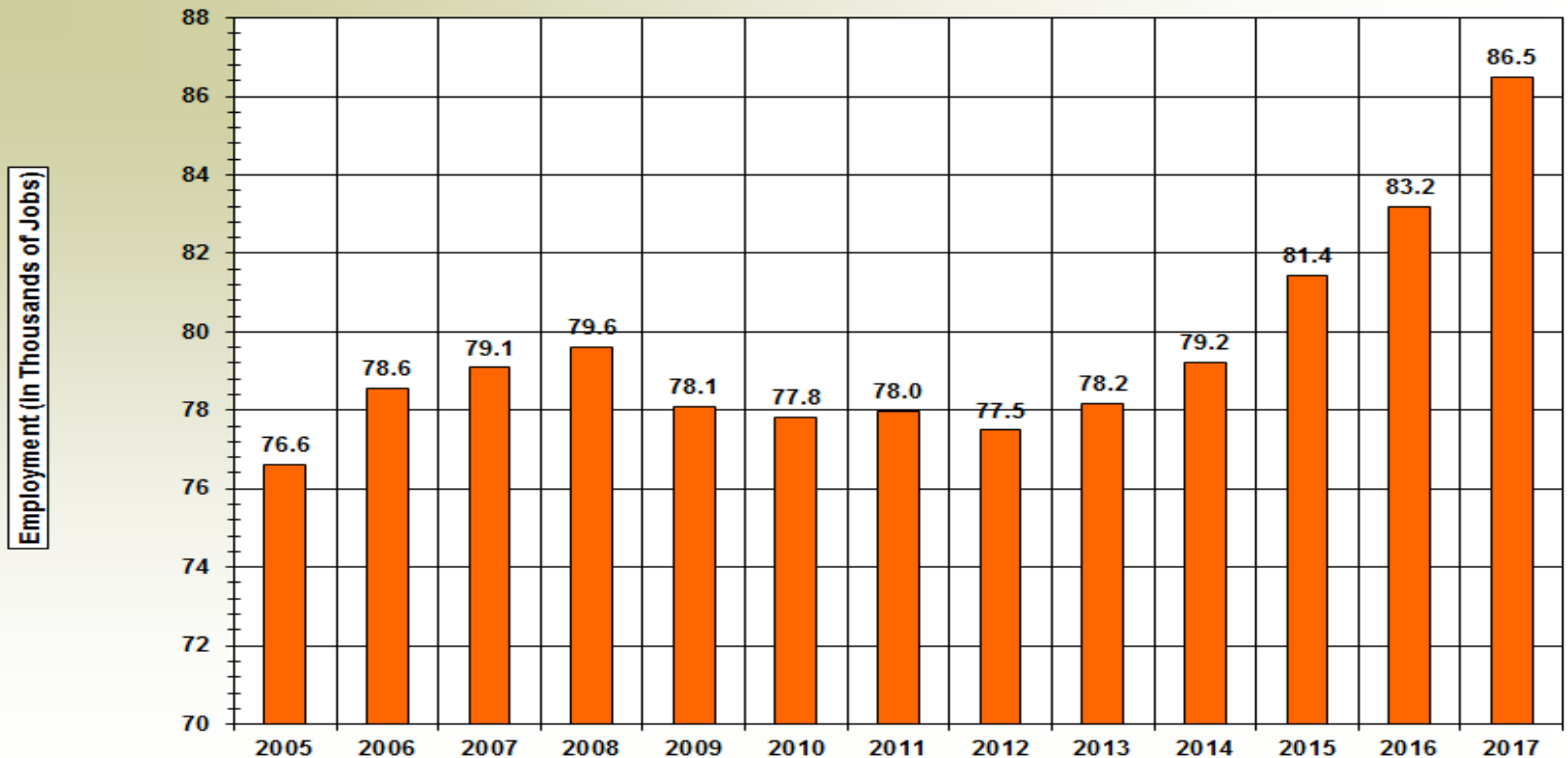
Unemployment Rates in Yakima County: From January 2015-December 2017



Yakima County's Civilian Labor Force: From December 2016-December 2017

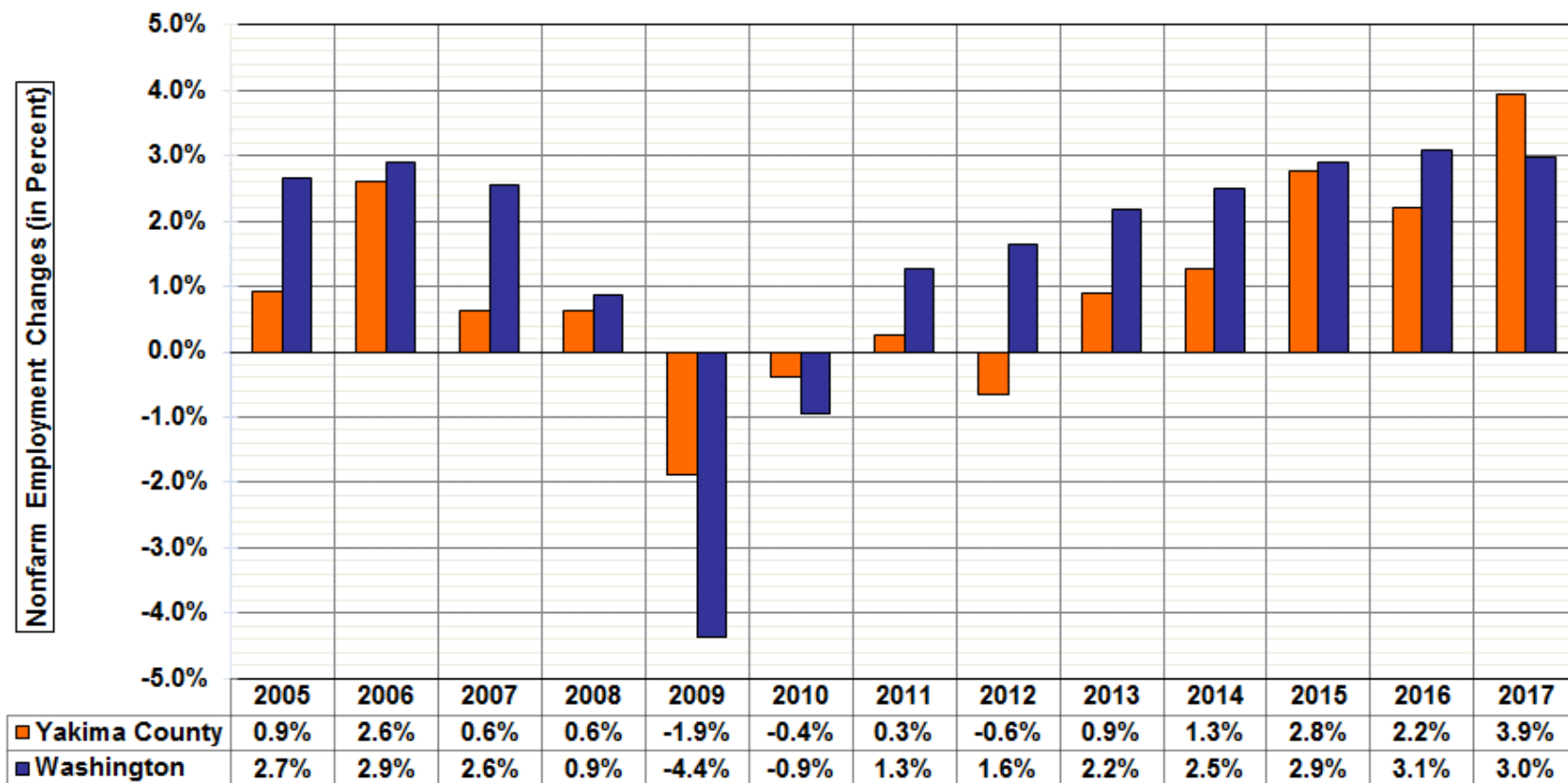
			Change	
	Preliminary	Revised	Dec-16	Dec-16
Yakima County	Dec-17	Dec-16	Dec-17	Dec-17 %
Labor force and unemployment				
Civilian labor force	119,520	121,626	-2,106	-1.7%
Resident employment	109,669	109,765	-96	-0.1%
Unemployment	9,851	11,861	-2,010	-16.9%
Unemployment rate	8.2	9.8	-1.6	

Yakima County: Total nonfarm employment from 2005-2017 (as of 23 Jan 18)



Source: CES Data, LMPA, ESD

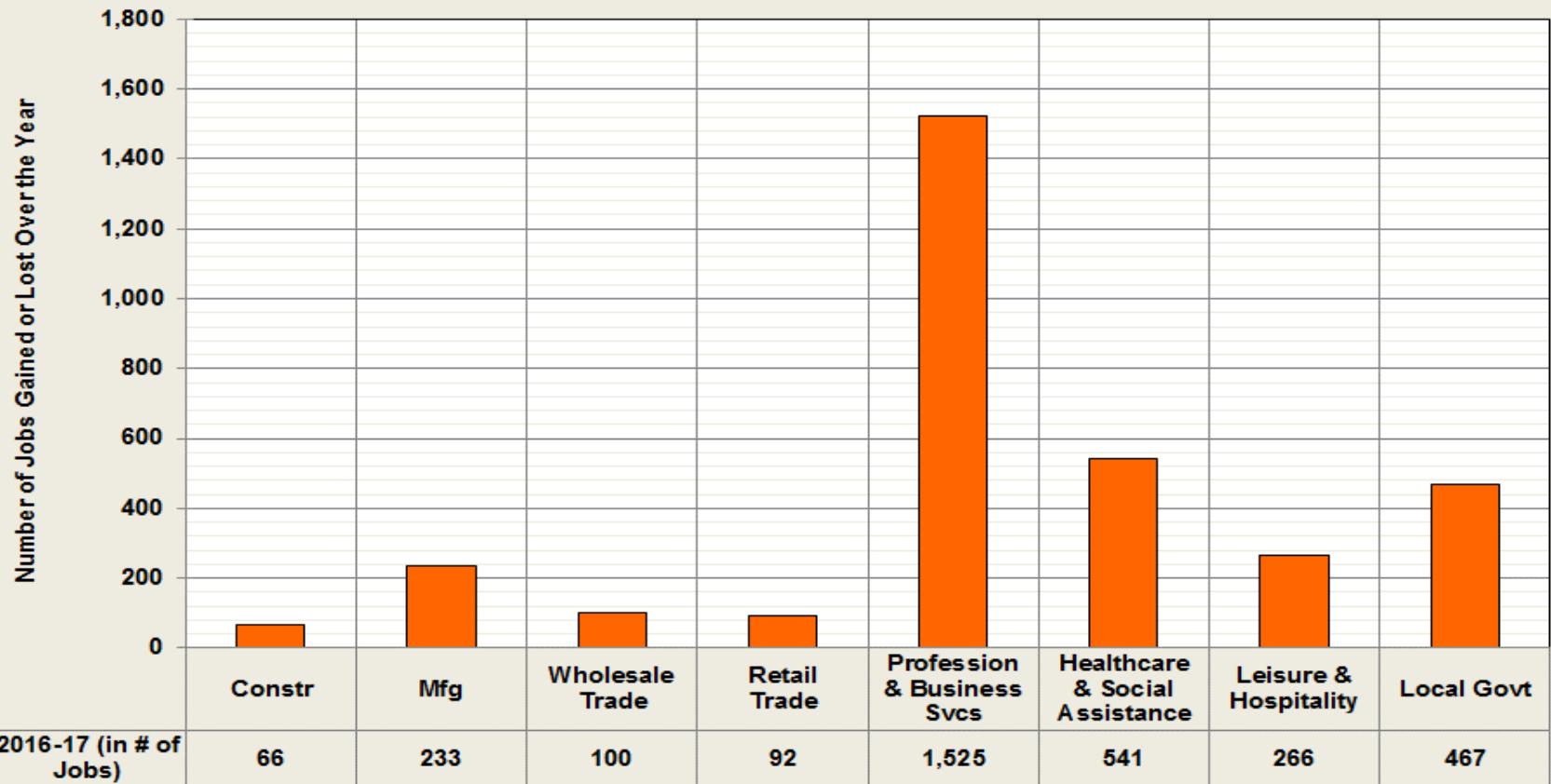
Yakima County and Washington: Average annual nonfarm employment changes from 2005 to 2017 (as of 23 Jan 18)



Yakima County - Nonfarm job growth in major industries from 2016 to 2017

Industry	Ann. Avg. Employment in 2016	Ann. Avg. Employment in 2017	Job Change	Percent Change
Total Nonfarm	83.2	86.5	3.3	3.9%
Total Private	65.7	68.5	2.8	4.2%
Goods Producing	12.4	12.7	0.3	2.4%
Mining, Logging, and Construction	3.8	3.9	0.1	1.7%
Manufacturing	8.5	8.8	0.2	2.7%
Nondurable Goods	5.4	5.6	0.2	3.4%
Service Providing	70.8	73.8	3.0	4.2%
Private Service Providing	53.3	55.8	2.5	4.7%
Trade, Transportation, and Utilities	19.1	19.3	0.2	1.0%
Wholesale Trade	4.5	4.6	0.1	2.2%
Retail Trade	11.0	11.0	0.1	0.8%
Transportation and Utilities	3.7	3.7	(0.0)	-0.2%
Professional and Business Services	4.1	5.6	1.5	37.4%
Education and Health Services	16.7	17.3	0.6	3.4%
Health Care and Social Assistance	15.4	16.0	0.5	3.5%
Leisure and Hospitality	7.6	7.8	0.3	3.5%
Food Services	5.6	5.8	0.2	3.9%
Government	17.5	18.0	0.5	2.8%
Federal Government	1.2	1.2	0.0	0.0%
State Government	2.8	2.8	0.0	0.9%
Local Government	13.5	14.0	0.5	3.5%

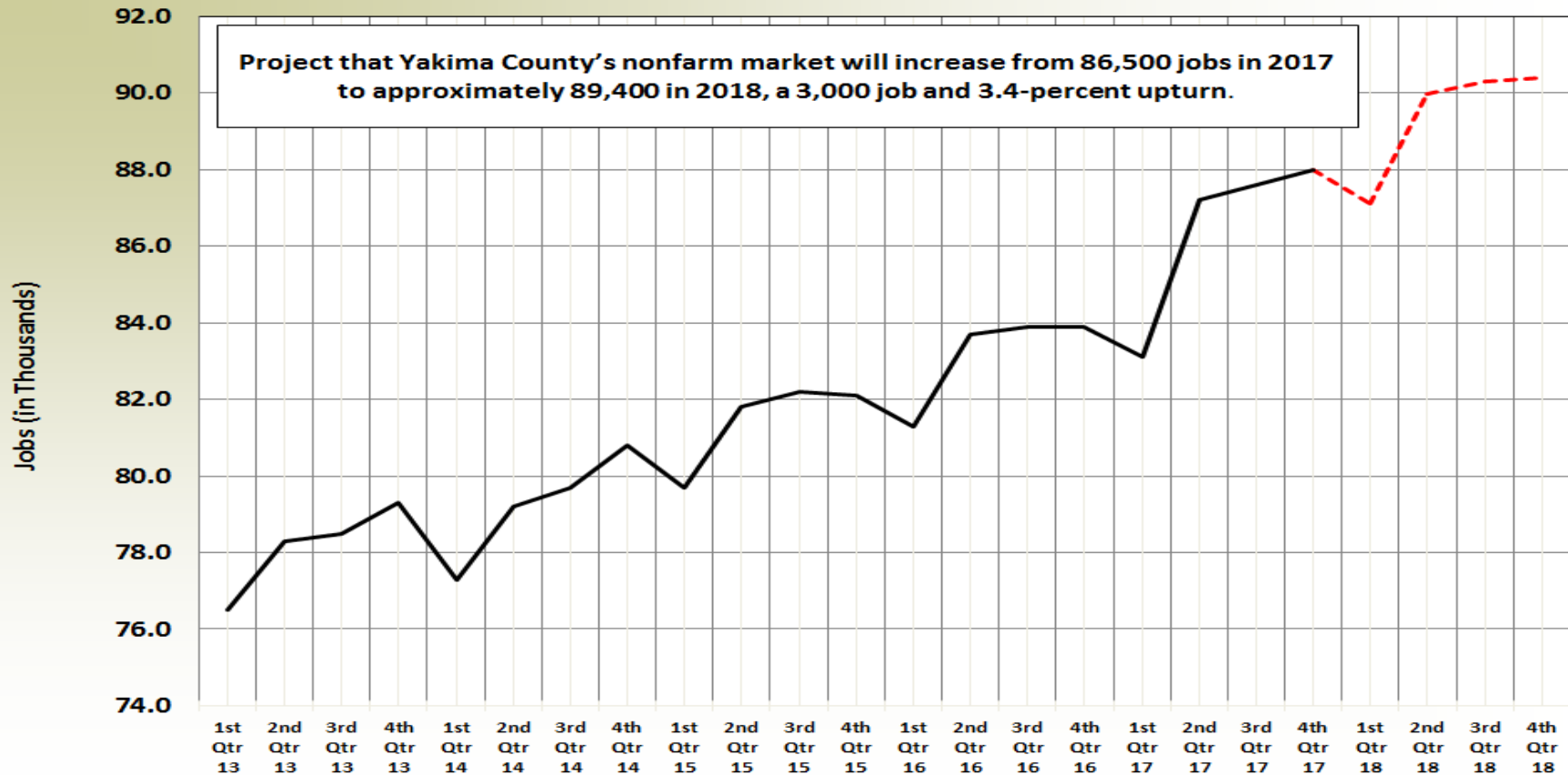
Summary of job gains/losses (in #) in Yakima County nonfarm industries from 2016 to 2017



Yakima County: Comparison of 2017 Employment Projections (made on 13 Mar 17) with Current Data (as of 23 Jan 18)

On 13 March 2017	1st Qtr	2nd Qtr	3rd Qtr	4th Qtr	An Avg
2017 (Projected)	82.8	85.1	85.2	85.8	84.7
2016	81.1	83.6	83.2	84.1	83.0
2016-2017 (in #)	1.7	1.5	2.0	1.6	1.7
2016-2017 (in %)	2.0%	1.8%	2.4%	2.0%	2.0%
On 12 February 2018:	1st Qtr	2nd Qtr	3rd Qtr	4th Qtr	An Avg
2017 (Actual, as of 23 Jan 18)	83.1	87.2	87.6	88.0	86.5
2016	81.3	83.7	83.9	83.9	83.2
2016-2017 (in #)	1.8	3.5	3.7	4.1	3.3
2016-2017 (in %)	2.2%	4.2%	4.4%	4.9%	3.9%

Projected nonfarm job growth in Yakima County for 1st-4th Quarters 2018



Although agriculture continues to be a pillar of the local economy, nonfarm job growth in 2017 “carried the day”

- Yakima County’s unemployment rate fell from 8.0 in 2016 to 6.7 percent in 2017 – the lowest average annual rate since at least 1990 (the past 27 years).**
- Yakima County’s Civilian Labor Force (CLF) grew from 125,794 residents in 2016 to 127,881 in 2017, up 1.7 percent. WA’s CLF grew at a 2.1 percent clip.**
- Nonfarm employment averaged 86,500 in 2017, up 3,300 jobs and 3.9 percent since 2016. (WA’s nonfarm growth was 3.1 percent.) Although professional and business services accounted for nearly half of all new jobs in 2017, most major local industries grew in the two- to three-percent range.**

“Yakima County Economy: 2017-in-Review”

Point of contact

Donald W. Meseck

Regional Labor Economist for Adams, Chelan, Douglas, Grant, Kittitas,
Okanogan, and Yakima Counties
Labor Market and Performance Analysis (LMPA)
Employment Security Department

Address: 1205 Ahtanum Ridge Drive, Union Gap, WA 98903

Phone: (509) 573-4564

Email: dmeseck@esd.wa.gov

Website: <https://esd.wa.gov/labormarketinfo>