

GREATER YAKIMA CHAMBER OF COMMERCE

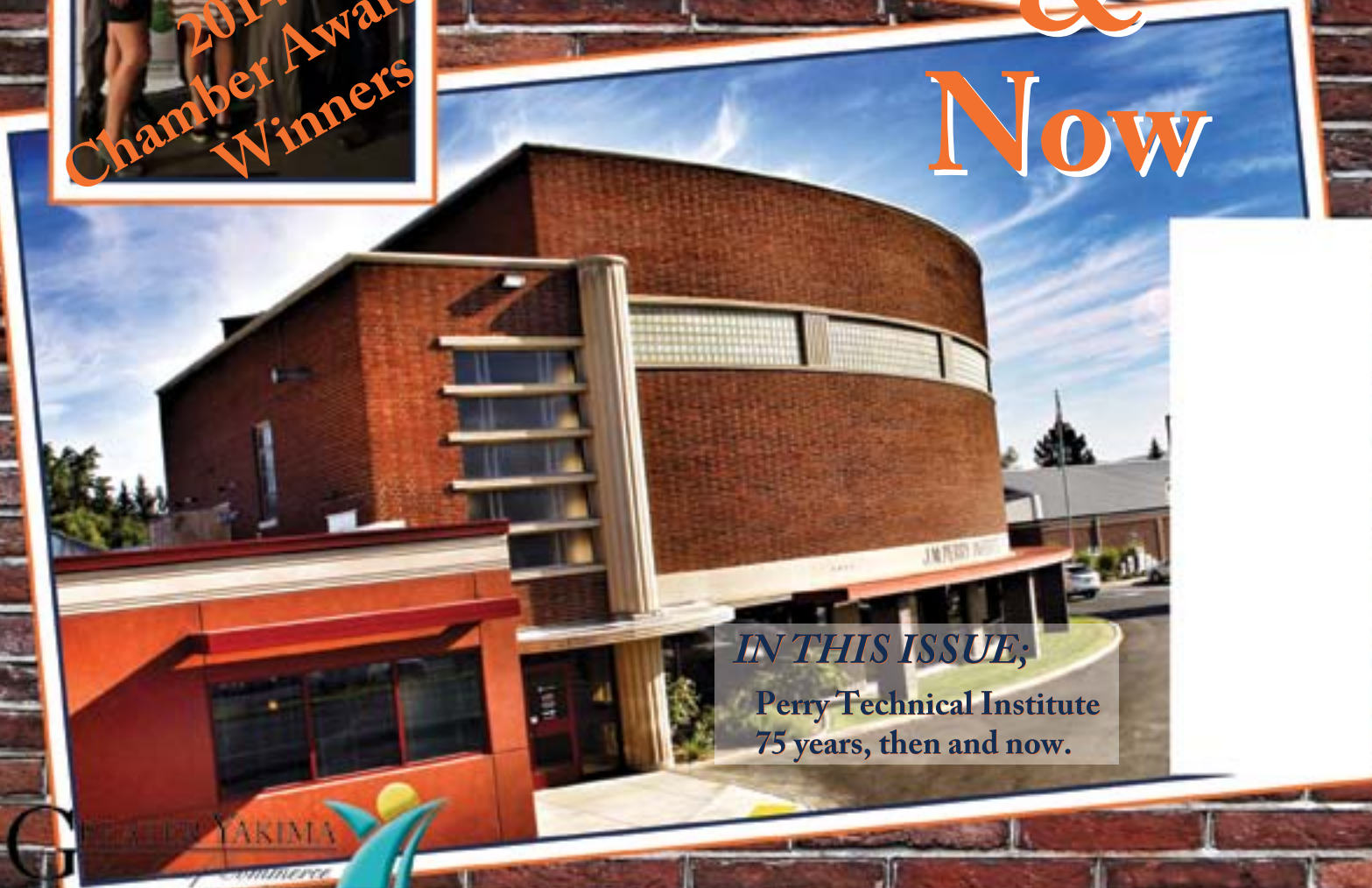
Monthly News Magazine • November - December 2014

Action Report

Then
&
Now



2014
Chamber Award
Winners



IN THIS ISSUE;
Perry Technical Institute
75 years, then and now.

CONTENTS

- | | |
|-------------------------------|----------------------|
| 4 Message from the Chair | 10-11 Chamber Awards |
| 4 President's Report | 12 Education |
| 7 Member Profile - Heartlinks | 14 Renewing Members |
| 8-9 Perry Technical Institute | 15 New Members |



ON THE COVER

Perry Technical Institute - 75 Years "Then and Now"

Action Report Layout & Design by: Amy O Graphics & Thane Phelan

© 2014. All rights reserved. The Action Report is a bimonthly publication of the Greater Yakima Chamber of Commerce containing information for and about the Yakima business community. The Action Report is mailed to Chamber members and civic leaders. To submit a press release or offer comment about our publication please e-mail the Chamber at chamber@yakima.org, Phone (509) 248-2021, send fax to (509) 248-0601 or write to P.O. Box 1490, Yakima WA 98907-1490. The magazine editor reserves the right to reject or edit any information to be published in the Action Report. Deadline to submit information is the 20th day of the previous month. Opinions expressed or implied in the Action Report do not necessarily reflect the opinion of the Greater Yakima Chamber of Commerce as an organization. The Action Report and the Greater Yakima Chamber of Commerce publish (USPS501-570) monthly for \$12 per year. Periodical postage is paid at Yakima, WA. POSTMASTER: Send address changes to Action Report Editor, P.O. Box 1490, Yakima, WA 98907-1490. Advertising sales performed by the Chamber staff. Printing and binding by: The Print Guys Inc. Yakima, Washington



Executive Committee Members

Chair: Joe Mann, Ron's Coin & Book
Vice Chair:
Immediate Past Chair: Mike Dooley, Wilbert Precast Inc.
Appointed by Chair: Jeff Louman, Huibregtse, Louman Associates, Inc.
Appointed by Chair: Ron King, Radio Yakima
Legal Counsel: Don Boyd, Carlson Boyd & Bailey PLLC
President/CEO: Verlynn Best, Greater Yakima Chamber of Commerce

Board of Directors

Mike Bastinelli, Yakima Police Dept.
 Christine Cote, Perry Technical Institute
 Jon DeVaney, Yakima Valley Growers and Shippers
 Christine Brown, KNDO TV
 Sue Price-Scott, Alegria and Company, P.S.
 Elizabeth Fitzgerald, Kronstadt Consulting
 David Ackerman, The Print Guys Inc.
 Doug Warren, McAdams, Wright, Ragen
 Carmen Mendez, Safe Yakima Valley
 Ryan Rodruck, PNWU

Ex-Officio Members

Tony O'Rourke, City of Yakima City Manager
 Sean Hawkins, Yakima Economic Development Manager
 Dominic Rizzi, Yakima Chief of Police
 Mike Leita, Yakima County Commissioner
 LTC Jason Evers, Post Commander - Yakima Training Center
 Linda Johnson, SBDC - Small Business Development Center
 Craig Dwight, YV Tech
 Luz Bazan Gutierrez, RDRC
 Greg Stewart, State Fair Park
 John Cooper, Yakima Valley Tourism
 Dave McFadden, New Vision/YCDA

Administrative Team members:

Verlynn Best, President & CEO
 Thane Phelan, Vice President
 Amy Lopez, Information and Events Coordinator
 Tracy Dumas, Member Services Representative
 Carolyn Gray, Office Administration

Mission Statement: "The Greater Yakima Chamber of Commerce is an organization that promotes pride in our diverse communities through positive, active leadership aimed at creating a cohesive, successful business climate in our County."

100% return on Investment

"Never Pay for Electricity Again!"

"FREE" In-Home Energy Evaluation, Regular \$395.00

Call 1-800-248-5543 Now



OR

Free, Money Saving, Solar System Quotes

Just bring your electric bill in to the store and we do the rest, free.

2008 So. 1st St. • Yakima
 509-248-9987

\$0 down Financing is available, oac, apply today

"Your Renewable Energy SuperStore"

Open 1pm-5pm, Tuesday-Saturday. Open anytime by appointment. Call 509-248-9987

Do you Pay an Electric Bill every month?

Eliminate it!

HUGE
 SOLAR PANEL
 SALE

50% OFF

while supplies last

Never Pay for Electricity Again!

Free Electricity

Tax Credit pays 30% of your cost

Up to \$5000 cash back per year!

Reduced / Eliminate Energy Bills

And NO Sales Tax!

CALL
 TODAY!

SEE IF SOLAR
 PANELS ARE
 RIGHT FOR
 YOU

509-248-9987

Solar77.com

40628v2



COST LE\$\$ ENERGY

2008 So. 1st St. • Yakima, WA 98903 • 509-248-9987

www.solar77.com • COSTLLE913QS • Est. 1979

SAVING YOU MONEY AND SAVING OUR PLANET!



Joe Mann
Chair of the Board of Directors

Buy Local Buy Yakima

I know, I know we have all heard it before, but as we approach the gift giving season I would like to remind everyone the importance of buying local. Yakima Valley is a very unique place, (what other town was moved completely to a new town by rolling buildings on logs?)

By purchasing locally we help showcase the local merchants and

MESSAGE FROM THE CHAIR

allow them to create a great product mix and services custom to our needs.



- Locally owned businesses build strong neighbors and a strong community thus making strong local neighborhoods.
- Locally owned businesses keep the big decisions local thus better impacting our community.
- Dollars stay home to create better wages and benefits and also a strong

local tax basis.

- Local entrepreneurship gives more to local nonprofits and charities and also helps grow other newer businesses.
- Did you know that small locally owned businesses are the largest employer's nationwide?!
- Most importantly, competition from local business gives us a choice and guarantees a broader range of products and services.

So when you are looking over your gift list or just wanting that unique gift, visit a local business, not an online store or other communities. Buy in Yakima; support those businesses that employ local people. Buy local, buy Yakima, and buy from your neighbor.

PRESIDENT'S REPORT



Verlynn Best
President & CEO

Can you believe the holidays are almost here? This is such a beautiful and meaningful time of year with its fall colors, fireplaces going and the opportunity to reflect on all we have to be thankful for. I am truly thankful for my family, my position at the Chamber of Commerce with its hard

working staff and the community we get to engage with every day!

We just hosted our 25th annual Ted Robertson/Chamber Awards gala which turned out to be the most successful one yet! My staff and I recently attended the Safe Yakima Valley luncheon; the Central Washington Hispanic Chamber of Commerce Awards dinner; the Make a Difference awards banquet; the Grand Opening/Ribbon Cutting for the new West Valley High School machine shop; plus numerous Grand Openings and/or Ribbon Cuttings for new and newly renovated businesses. We get to work alongside outstanding people such as Chief Dominic Rizzi, Tony O'Rourke, Micah Cawley, Sean Hawkins, Joe Mann, Ron King, Bob Hall, Mel Wagner, Adrienne Garner, Steve

Mitchell, Mike Brophy, Christine Cote, Craig Dwight, Carlos Olivarez, Curtis King, Carmen Mendez, and Maureen Adkison just to name a few. I could not be prouder than to be from this great Yakima Valley!

As we move into this holiday season, please take time to reflect on what's good in your home, your workplace, your community and in your valley - and celebrate it!

We would like to wish you and yours a wonderful Thanksgiving, a very Merry Christmas and a very blessed, healthy and prosperous New Year!

Your Greater Yakima Chamber of Commerce Staff,
Verlynn, Thane, Amy, Tracy, and Carolyn

SMALL BUSINESS SATURDAY®

NOV 29

#ShopSmall With Us #GYCC



The Greater Yakima Chamber of Commerce is proud to support Small Business Saturday®, a day dedicated to celebrating small, local businesses like yours. Make November 29th huge for your business by getting involved in the big day.

Check out resources at ShopSmall.com

AND call the Chamber at 509.248.2021 for ways you can be involved and receive a Shop Small promotional kit (supplies are limited). For more information about participating, call now or email thane@yakima.org.

Welcome back Bruce Lyman!

We are pleased to welcome Bruce Lyman, Senior Vice President and Regional Manager to the Union Gap Office. Bruce has more than 25 years of experience in banking and lending—including CVB. Bruce is actively involved in the community through his efforts with the Yakima Sunrise Rotary Club and United Way of Central Washington.

As Mike Broadhead transitions to retirement, Bruce will manage the Central Valley region. We encourage you to stop by for a visit or give Bruce a call.



Bruce Lyman, SVP
Regional Manager
509.834.2714



Mike Broadhead
President
509.834.2701

Union Gap | 2205 S First St.

CVB Central Valley Bank
A DIVISION OF HERITAGE BANK

MEMORIAL



*MEMORIAL: Recognized for excellence in cancer care

Cancer is an overwhelming diagnosis. Patients are left wondering about their future, their families and their quality of life.

Yakima Valley Memorial Hospital and Memorial Family of Services understand this and have gone to great lengths to provide patients and their families with the information, treatment and services they need, from diagnosis and ground-breaking treatments through survivorship and end-of-life care.

This multidisciplinary approach has once again been recognized by the Commission on Cancer of the American College of Surgeons with accreditation. This acknowledgement honors Memorial for treating cancer as a complex group of diseases that requires consultation among surgeons, medical and radiation oncologists, diagnostic radiologists, pathologists and other cancer specialists, ultimately resulting in improved patient care.

When patients receive care at a Commission on Cancer-accredited facility, they also have access to information on clinical trials and new treatments, genetic counseling, patient-centered services such as psycho-social support and guidance and coordination through patient navigation support programs.

Memorial maintains a cancer registry and contributes data to the National Cancer Data Base, a joint program of the Commission on Cancer and American Cancer Society. This nationwide oncology outcomes database is the largest clinical disease registry in the world. Data on all types of cancer are tracked and analyzed through the database and used to explore trends in cancer care. Commission on Cancer-accredited cancer centers, in turn, have access to information derived from this type of data analysis, which is used to create national, regional and state benchmark reports.

The Commission on Cancer accreditation program provides the framework for Memorial to improve its quality of patient care through various cancer-related programs that focus on the full spectrum of cancer care. These include preventative programs to help patients maintain a healthy lifestyle; early diagnosis with screening technology at `Ohana Mammography Center; treatment, rehabilitation and life-long follow-up for recurrent disease through North Star Lodge Cancer Care Center; and home health care that includes various support services and end-of-life care, including Memorial's Cottage in the Meadow hospice home.

For more information, visit yakimamemorial.org or northstarlodge.org.

Healthy Yakima.

*MEMORIAL

Comprehensive
Cancer Care

MEMBER PROFILE



Heartlinks Hospice and Palliative Care is your local, independent for IMPACT non-profit. It is the first rural hospice this side of the Mississippi and has been serving the Yakima & Benton County areas since April 1978. Their mission is to provide superior holistic care so that patients can "live" life fully and meaningfully.

While both hospice and palliative care services involve In-Home holistic care that focus on increasing the quality of life, they allow the recipients the option of two very different pathways.

A disease can essentially be approached in either of two ways—refusal of treatments because no more options exist or simply because quality of life takes priority over quantity in which case, measures are taken to be as comfortable as possible. OR an individual may seek curative treatments in hopes of prolonging life. Typically, when doctors have run out of options to slow or stop the progression of a disease, Hospice Care is initiated.

Hospice is usually initiated when a patient has about six months to live and does not wish to seek, or has run out of treatment options and they do not wish to have artificial life support or medial heroics preformed. Hospice allows a patient to slowly and methodically organize their end of life care and to complete their "bucket list". Hospice provides a wide spectrum of compassionate services to help patients and their families cope with a terminal illness and death. The goal of hospice is to manage pain and other symptoms enabling patients to live their last days with dignity. Hospice accomplishes this goal by providing an array of medical, spiritual, and social workers with the cooperation of both healthcare professionals and trained volunteers.

Palliative Care should be initiated when an individual diagnosed with a serious and potentially life limiting illness chooses to pursue treatment. This program is ideal for, but not limited to, those diagnosed with lung, liver, and heart disease, and all types of cancer. Treatments may lengthen a life span, but can worsen or even cause undesirable symptoms. Symptoms often include fatigue, shortness of breath, nausea/vomiting, and pain which decrease your quality of life. Palliative care focuses on increasing your quality of life by relieving those symptoms while you continue to seek treatment. Their In-Home/Community-Based care involves a practitioner meeting with you and your family in your home where you are most comfortable. Meeting in your home not only alleviates the burden of having to travel for an appointment, but allows the practitioner to treat you holistically in a way that is realistic for you and your situation. Your doctors remain fully involved while the Palliative Care Specialist is working with you.

Heartlinks is currently the only company that provides palliative care to children in Central Washington. Unfortunately, the programs are so poorly reimbursed by the state that without the community's support this program will be forced to shut down. If that happens many very sick children and their families will be left without help. Having your child be diagnosed with a terminal illness is tragic enough, but receiving that news and being told there are no longer any resources to help during this dark time is unimaginably horrifying.

Heartlinks has relied on community donations and the income generated by its second hand store, HoBS, located in Prosser to fund the pediatric palliative care program. HoBS currently provides about 1/3 of the moneys required to run pediatric palliative care. Unfortunately, HoBS is now in need of repairs or it will be forced to close its doors, resulting in the end of all palliative care in Yakima and Benton Counties.

If you would like to play a vital role in saving this asset in your community, please contact Heartlinks to learn how. Their capital campaign to save this program officially started October 28th, 2014 with a party at HoBS.



1300 N. 40th Ave. Suite 113
Yakima, WA. 98908
C 509-307-0401
P 509-248-4616
F 509-248-4615
cdennis@cascaedewirelessllc.com
www.uscellular.com



Clint Dennis
Store Manager

Across from Fred Meyers

PERRY TECH



Perry Technical Institute at 75

Perry Technical Institute is celebrating 75 years of putting people to work by breaking ground on a new building.

This project marks the first time in the school's history that Perry has expanded outside of the main campus. The new building is being named Plath Hall in honor of longtime Perry supporters Dorothy and the late Fred Plath.



all my efforts toward developing this school and make it a perpetual memorial of growing usefulness," she said in announcing plans to open the school.

Mrs. Perry created the Harriet I. Perry Trust to fund the school's construction and appointed three trustees – Roy Matson, Arthur Coffin and Harcourt Taylor – to oversee its operation. J.M. Perry Institute of Trades Industries Agriculture was dedicated on December 27, 1940, and opened its doors to students on January 2, 1941. The school offered 14 training programs; five of those programs are still offered today.

During World War II, the Army Air Corps used the school for nine months to train aircraft mechanics, welders and parachute riggers. When the military was finished training at Perry, Pan American Airways used the school to train men for war service.

In the years following World War II, enrollment grew and the school added new programs. Originally created as a "school for boys," females began enrolling in 1971. The school was renamed Perry Technical Institute in 1986.

Several new buildings have been added over the years, all contained within the original campus. With the exception of the auditorium, every area on campus has been renovated. The hangar building was completely renovated and dedicated as the Eugene Shields Technical Training Center in 2009.

Over the years, programs have been added and eliminated according to the needs of industry. Current offerings include Automotive Technology; Business Technology & Accounting; Electrical Technology; Heating, Ventilation Air Conditioning & Refrigeration Technology; Information Technology & Communications Systems; Instrumentation & Industrial Automation Technology; Machine Technology; Medical Assistant; Medical Office Administration & Coding; and Welding Technology.



Programs range in length from one to two years.

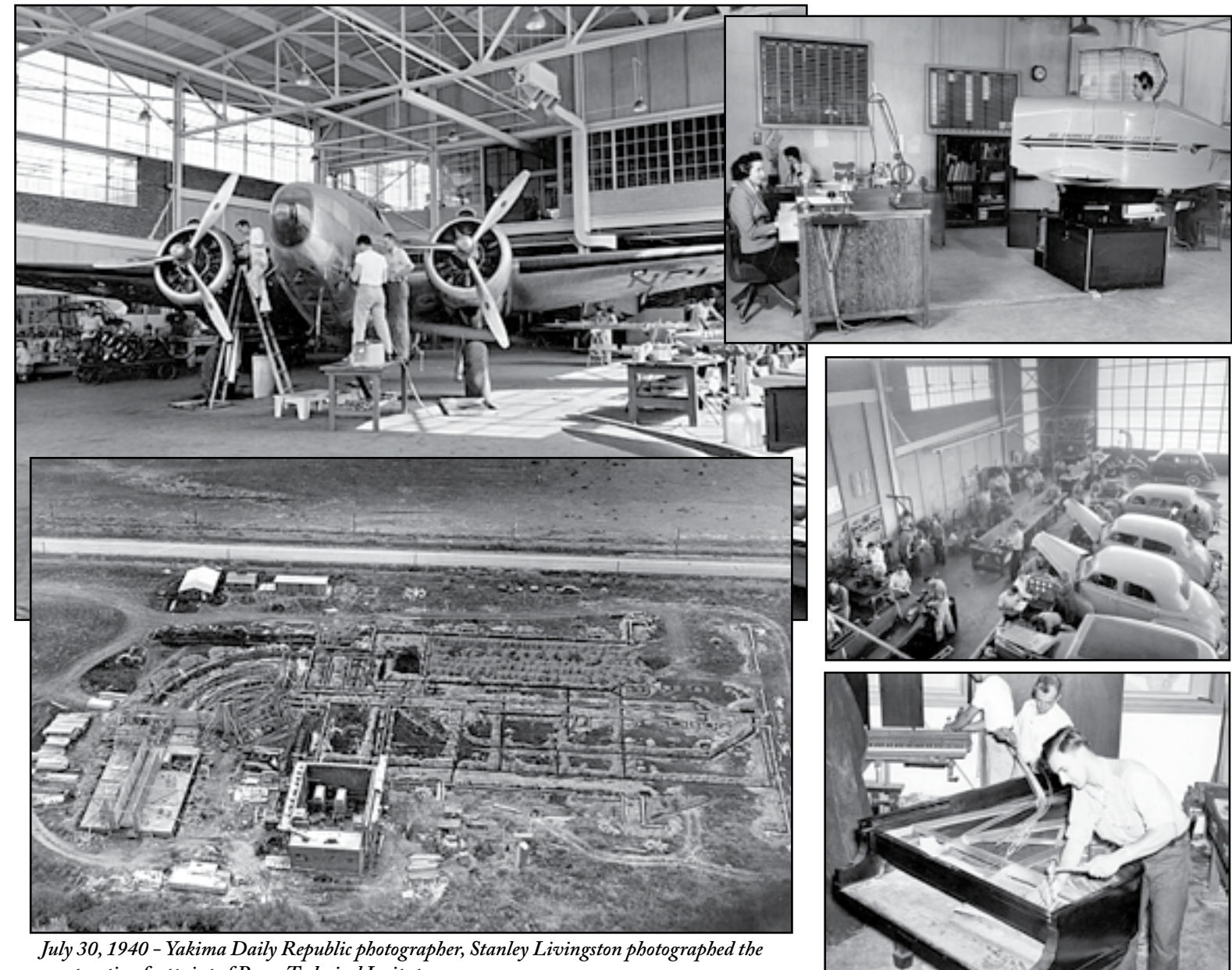
Plath Hall will house the Instrumentation Program. The 38,000-square foot building was designed by Brockway, Opfer, Raab Architecture. General contractor for the project is Tri-Ply Construction. The \$8 million project is being funded through donations and grants.

Three trustees – Terry Schmalz, Senator Curtis King and Jake Jundt – oversee operation of the school. Perry currently has 671 students enrolled and employs 100 staff and faculty members.

"While the school has grown and changed over the years, Mrs. Perry's mission is still very much alive," said President Christine Coté. "We take pride in our rich history and the service we provide to our community and to industry."



President Christine Coté welcomes guests for groundbreaking of Plath Hall



July 30, 1940 – Yakima Daily Republic photographer, Stanley Livingston photographed the construction footprint of Perry Technical Institute.

BLACK & WHITE

GALA PRESENTATION OF THE
TED ROBERTSON COMMUNITY SERVICE
AND ANNUAL CHAMBER AWARDS

October 9th, 2014

*This year we set a record for
nominees, votes, and attendees
at the Awards. YOU made
it Yakima's biggest night of
Awards!
Here are your 2014 Chamber
Award Winners!*



*Nonprofit of the Year - Perry Technical Institute
(PTI President Christine Cote accepts from MC Randy Beehler)*



*Chamber Volunteer of the Year
Joe Mann*



*Congratulations to the 2014 Ted Robertson Community Service Award Recipients:
Al DeAtley, Bill Doherty, and Ken Marble*



*Emerging Business of the Year AND Business of the Year!!!
Bale Breaker Brewing Company*



*Member of the Year - For Outstanding Community Service
Liberty Bottleworks*

What's New in Education!

Christopher R. Nesmith
Assistant Principal/CTE Director
West Valley High School
Freshman Campus

West Valley has an emphasis on College and Career readiness for all students. Instead of viewing college enrollment as the finish line of their high school experience, we want students to view education as a way to meet their career and professional goals. We want Career and Technical Education programs meeting the employment demands of the Yakima Valley, students should be learning skills aligned to state and national employment standards. Finally, we want students in West Valley to become lifelong learners. In September of 2014 we opened a brand new machine shop which fits nicely into this vision.

Last month there were 8,300 manufacturing jobs in the Yakima Valley (Yakima County Labor Market Analysis - September 2014). Many of these manufacturing jobs go unfilled due to the present labor force not having the required skills. With high school programs emphasizing on career goals, students have the ability to prepare for a career with a wide open job market.

This machine shop enables West Valley's Career and Technical Education Department to accomplish our three driving goals:

1. Every class should lead to a credential that is recognized by trades – either Tech Prep (College Credit) or Technical Certification.
2. 360 hour sequence of courses that are technically intensive and rigorous.
3. Every program should lead to the workforce, an apprenticeship, or post-secondary education.

The machine shop meets all of these goals. Students have the ability

to learn curriculum provided by the Aerospace Joint Apprenticeship Committee (AJAC). Students are learning the same skills with the same curriculum new hires in the aerospace industry are being trained on. From West Valley, students have the ability to enter the work force directly from high school or the ability to pursue further machining instruction from Perry Technical Institute or Yakima Valley Community College. Machining also benefits students looking to pursue a four year degree, students interested in become mechanical engineers need to learn machining skills prior to making designs.

West Valley's programs of study are not exclusive to machining. We now offer ten programs aligned to state and national employment standards. Our programs carry college credit and/or a recognized industry certification. Most importantly, we help students make connections between the next step in their education and

their future career goals. With our Programs of Study, students have the ability to create connections from high school, through college, to career.



West Valley student tours the new facility

FIELDSTONE
MEMORY CARE

NEVER BEFORE SEEN IN YAKIMA!

Fieldstone Memory Care Center, the newest progressive assisted living community in Yakima, has created a safer, more responsive care environment through the GE QuietCare® monitoring system.

This SMART technology enhances the quality of life and promote independence for the seniors in our care.

NOW OPEN | TOURS DAILY

State-of-the-art care setting, focusing exclusively on residents with Alzheimer's, Parkinson's, and Dementia.

Learn more at fieldstonememorycare.com or call 965.5282

Yakima Valley Tourism 25th Anniversary Holiday Reception

Yakima Valley Tourism invites you to celebrate it's 25th Anniversary Holiday Reception December 4th 5:00 p.m. at the Yakima Convention Center in Downtown Yakima. Cost to attend is \$15 per person or \$10 with a new, unwrapped toy donation for Toys for Tots. With a Silver Celebration as the theme, there will be appetizers, local wines and craft beverages, entertainment and a silent auction. Sponsors to date include ActNow Automotive, Greater Yakima Chamber of Commerce, Holiday Inn & Holiday Inn Express, Moss Adams, and Yakima Federal Savings & Loan. To RSVP call 509-575-3010 or e-mail laura@yakimavalleytourism.com

Buffalo Wild Wings Comes to the Yakima Valley

Buffalo Wild Wings will be bringing their award winning selection of wings and beers to the Yakima Valley, in early December, when they open their doors at the Valley Mall in Union Gap. Buffalo Wild Wings will feature 36 beers on

BUSINESS BRIEFS

To submit a "Business Brief" - announcements, staff changes, awards etc. - email brief copy and picture to thane@yakima.org (copy may be edited for space) Include "Business Brief" in subject line.

tap, including local Yakima breweries, and over 20 signature sauces and dry rubs for their award winning wings. Along with their wings and beer, B-Dubs will also showcase the best sports viewing experience in the Yakima Valley. Their restaurant will feature wall to wall HD big screen TV's, a sophisticated AV system throughout the bar and dining room, every sports package that will feature all out of market teams, as well as Boxing and MMA matches.

Matt Sprecher, Field Marketing Coordinator for Buffalo Wild Wings, said, "We are extremely excited to join the Yakima Valley community and team up with local organizations, schools and all levels of sports programs. We're also thrilled to bring in the incredible beers the Yakima area has to offer for our guests to enjoy. We are always looking to bring the ultimate sports viewing experience to our guests and being engaged with the community events and local breweries is a major part of that.

Buffalo Wild Wings plans on

having the interior décor be NW themed, with local high school and college jerseys, local legends and everything Seahawks, Cougs, Huskies, Mariners and Sounders. Buffalo Wild Wings is accepting team member applications at www.Work4BWW.com

Yakima's Elizabeth Fitzgerald To Speak At International Summit On Fundraising



Elizabeth Fitzgerald, owner of Kronstadt Consulting in Yakima, has been invited to speak at the inaugural International Fundraising

Summit January 5 – 9, 2015. The summit, which will be a five day event and is to be broadcast online, will feature 30 of the world's top experts on raising funds for nonprofits.

Fitzgerald, who writes a popular blog aimed at helping non-profit businesses, has just finished a book called "60 Keys to Nonprofit Success." She has also had a number of articles published on the U. S. Chamber Foundation's Institute for Organization Management Blog, Washington Nonprofits E-Newsletter and the Greater Yakima Chamber of Commerce Action Report Magazine.

She is president of the Association of Fundraising Professionals Central Washington Chapter and a member of Rotary International (Downtown Yakima Club). She is a member of the board of directors for the Greater Yakima Chamber of Commerce and the Yakima Character Education Committee. She is also a member of Toastmasters International and the Warehouse Theatre Company and she previously served as a SCORE Small Business Counselor and board member for the Orthodox Christian School Association.

5800 Summitview Ave.
457-7895

FREE

Business Checking

Available to locally owned businesses

RENEWING MEMBERS

Chamber Members who renewed their Memberships in August & September
2014 - Please support these businesses that support your Chamber!

Members for 1- 4 Years:

A-L Compressed Gases, Inc. – 2 Years
Bear Trade Show Services, Inc. – 2 years
Dixon Golf – 2 Years
Family Vision Care, PS – 2 Years
JC Penney – 2 Years
Kronstadt Consulting – 2 Years
Larson Gallery Guild – 2 years
Melody Lane Dance, Music & Drama Academy – 2 Years
MB Designs – 2 Years
Yakama Nation Legends Casino – Board of Directors – 2 Years
Yakima Valley Conference of Government – 2 Years
Auto Art & Collision Repair – 3 Years
Central WA Family Medicine Residency Program – 3 Years
Designs Limited – 3 Years
Don's Donuts & Julie's Java– 3 Years
Liberty Bottleworks – 3 Years
Magic Metals, Inc. – 3 Years
Mighty Tieton, LLC – 3 Years
Solara Solar, LLC – 3 years
Walmart #2269 – 3 Years
Miller & Associates Wealth Management, LLC – 4 Years
Primerica – 4Years
Quiznos– 4 Years
Service Alternatives, Inc. – 4 years

Members for 5- 9 Years:

Canyon River Ranch Lodge– 5 Years
Chuker Cherries – 5 Years
Invisible Ink – 5 Years
McAdams, Wright, Ragen – 5 Years
Walmart #5098 (West Valley) – 5 Years
Belu Salon – 6 Years
Hometown Ace Hardware – 6 Years
Ahtanum Ridge Family Medicine – 8 Years
Durrett & Associates, PLLC – 8 Years
Delaney Lost Sock Laundromat – 9 Years

Yakima Rock & Mineral Club – 9 Years

Members for 10 -14 Years:

DaVita Dialysis Center (Union Gap) – 10 Years
Peopleworks – 10 Years
Re/MAX Traditions – 10 Years
Storage Court – 10 Years
AB Transmission, LLC – 12 Years
Valley Hills Funeral Home – 12 Years
SCORE (Counselors to America's Small Business) – 13 Years
Tube Art Signs & Sports Displays – 13 Years
Advanced Digital Imaging – 14 Years
Camp Prime Time – 14 Years
Eagle Signs, LLC – 14 Years
Fort Simcoe Jobs Corps Center – 14 Years
Living Care Retirement Community – 14 Years
2nd Street Grill – 14 Years

Members for 15-19 Years:

Casey Family Programs – 15 Years
Radio Yakima – 15 Years
West Coast Plastics, Inc. – 16 Years
Graphic Label – 17 Years
HomeStreet Bank – 17 Years
Wellness House – 18 Years
AmericanWest Bank (Creekside) – 19 Years
AmericanWest Bank (Yakima Avenue) – 19 Years
Best Western Lincoln Inn – 19 Years
Brockway Opfer Raab Architecture, PLLC – 19 Years
Yakima Association of Realtors – 19 Years

Members for 20-24 Years:

ALISCO – 20 Years
Adelante Media Group – 23 Years
Avail Home Health – 24 Years
Bartons Center Pharmacy dba Gibbons Pharmacies, LLC – 24 Years

Edward Jones-Gailon Gentry, Financial Advisor – 24 Years

Members for 25-29 Years:

Apprisen – 25 Years
Summit Leasing, Inc. – 28 Years
Oxford Inn – 29 Years

Members for 30-39 Years:

Super 8 Motel of Yakima- 30 Years
Golden Wheel Restaurant – 31 Years
Engravings Unlimited, Inc. – 33 Years
Keeler's Medical Supply – 34 Years
McDonald's of Yakima County (Business Office) – 34 Years
Roy's Ace Hardware, Inc. – 34 Years
YMCA of Yakima – 34 Years
YWCA of Yakima – 34 Years
King Beverage, Inc. – 36 Years
Yakima Waste Systems, Inc. – 36 Years
JELD-WEN Windows & Doors – 38 Years
Wells Fargo Insurance Services – 38 Years

Members for 40-49 Years:

Central Pre-Mix Concrete Co. – 47 Years

Members for 50-59 Years:

Bob Hall's Honda – 53 years
Cintas Corporation – 53 Years
Fruit Packers Supply, Inc. – 53 Years
Sunfair Chevrolet, Inc. – 53 years

Members for 60-69 Years:

Yakima School District #7 – 67 Years

Members for 90 +Years:

H. R. Spinner Corporation – 91 Years

NEW MEMBERS

We are pleased to announce the following new businesses have joined your Chamber during the month of August & September.

Applied Ind. Tech
909 N Front ST
Yakima WA, 98901
(509) 457-1600

A & R Solar
2444 1st Ave S
Seattle, WA 98134
(206) 707-9937
www.a-rsolar.com

Community Resource Group
505 N 4th ST STE 7
Yakima, WA 98901
(509) 965-5310
www.comunity-resource-group.net

Get Air Yakima
1015 East Lincoln Avenue
Yakima WA, 98901
(509) 823-9900

Hobby Lobby
2203 S 1st ST
Yakima WA, 98903
(509) 452-0444
www.hobbylobby.com

Hurst, Brumback & Brusic
1905 Rainier PL
Yakima WA, 98903
(509) 457-7777
<http://hurstandbrumback.com>

Hyperbaric Centers of Washington
302 So. 12th Avenue
Yakima, WA 98902
(509) 895-7931
www.hyperbariccentersofwa.com

Lynchpin Foundation
1200 Chesterley DR #180
Yakima WA, 98902
(509) 895-7611
www.lynchpinfoundation.org

Maurices
1732 E Washington Ave
Yakima, WA 98903
(509) 576-3645
www.maurices.com

Morgan Stanley – Jay Kelley
610 E Yakima Ave
Yakima, WA 98901
(509) 454-2303
jay.kelley@morganstanley.com

Morgan Stanley – Tom King
610 E Yakima Ave
Yakima, WA 98901
(509) 454-2303
tom.king@morganstanley.com

Mr. Key
(509) 480-2519
dadunn55@charter.net

Nana Kate's Eatery
432 E Goodlander
Selah WA, 98942
(509) 697-4804
www.nanakates.com

Paul Newman Auctions
912 W Yakima Ave
Yakima WA, 98901
(509) 945-9968
www.paulnewmanauctions.com

St. Joe's Bingo/ Sister Rebecca Berghoff Foundation
3112 Main ST
Union Gap, WA 98903
(509) 457-0671
www.srbfoundation.org

Smith Auto Repair & Electric
12 S 3rd Ave
Yakima, WA 98902
(509) 453-8275
www.srbfoundation.org

Tieton Cider Works
619 W J ST
Yakima, WA 98901
(509) 673-2880
www.tietonciderworks.com

Statement of Ownership, Management and Circulation - Action Report Magazine
Filing Date October 2014
Issue Frequency - Bi-monthly
6 Annual Issues
Annual Subscription \$12
Office of Publication-Headquarters; Greater Yakima Chamber of Commerce
PO Box 1490 Yakima, WA 98907-1490
Managing Editor and Contact; Thane Phelan, Vice President
Publisher; Verlynn Best, President & CEO (509)248-2021
Owner; Greater Yakima Chamber of Commerce
The Purpose, function, and non-profit status of this organization and the exempt status for federal income tax purposes has not changed during the preceding twelve months.

Extent and Nature of Circulation	Average Number of copies (each issue) During preceding Twelve Months	Number of Copies of Single Issue Published Nearest to Filing Date
A. Total Net Run	1500	1500
B(1) Paid/Requested Outside County	87	71
B (2) Paid In-County	1204	1173
B (3) Sales-Non-USPS Distribution	0	0
B (4) Other Mailed Classes -USPS	0	0
C. Total Paid Distribution	1291	1244
D (1) Free Nominal rate outside-county	0	0
D (2) Free Nominal rate in-county	0	0
D (3) Total free distribution – other	0	0
D (4) Free distribution outside mail	0	0
E. Total free distribution – other	0	0
F. Total Distribution	1291	1244
G. Copies not distributed	209	256
H. Total	1500	1500
I . Percent paid/Requested circulation	100.00%	100.00%

We make your printing needs a reality.



The Print Guys are Yakima's **Business Solutions Partner.**

As a 13 year member of the Greater Yakima Chamber of Commerce, we understand the challenges that local businesses face. We also know that the world of computers and print technology can be intimidating.

So, here at Print Guys we have been partnering with Yakima Chamber Members to provide solutions for their day to day business printing needs. From the marketing items that bring new opportunities to the forms that keep operations running smoothly, our goal is to solve all of our customers' challenges with the highest quality printing and best customer service within the time frame that they need.

Call Today!
509.453.6369

2802 W. Nob Hill Blvd., Suite B
Yakima, WA 98902
www.printguysprinting.com

